

Product datasheet for **TA366214**

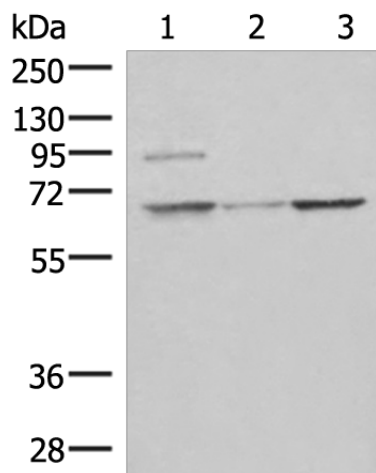
BRME1 Rabbit Polyclonal Antibody

Product data:

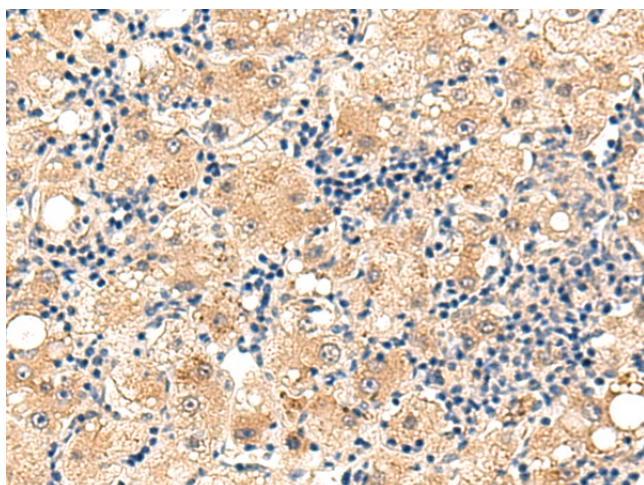
Product Type:	Primary Antibodies
Applications:	IHC, WB
Recommended Dilution:	WB: 200-1000 WB positive control: PC3, TM4 and RAW264.7 cell lysates IHC: 50-300 Positive control: Human liver cancer Predicted cell location: Cytoplasm
Reactivity:	Human, Mouse
Host:	Rabbit
Isotype:	IgG
Clonality:	Polyclonal
Immunogen:	Fusion protein of human C19orf57
Formulation:	pH7.4 PBS, 0.05% NaN ₃ , 40% Glycerol
Concentration:	lot specific
Purification:	Antigen affinity purification
Conjugation:	Unconjugated
Storage:	Store at -20°C.
Stability:	1 year
Predicted Protein Size:	70 kDa
Gene Name:	chromosome 19 open reading frame 57
Database Link:	Entrez Gene 79173 Human Q0VDD7
Background:	The function of this protein remains unknown.
Synonyms:	MGC11271; MGC149720



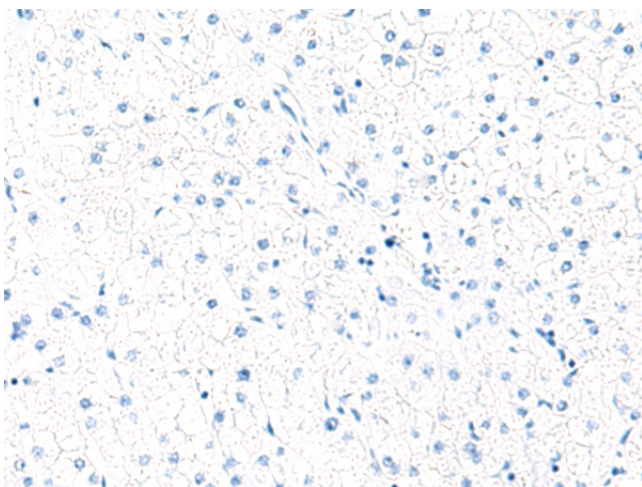
[View online »](#)

Product images:


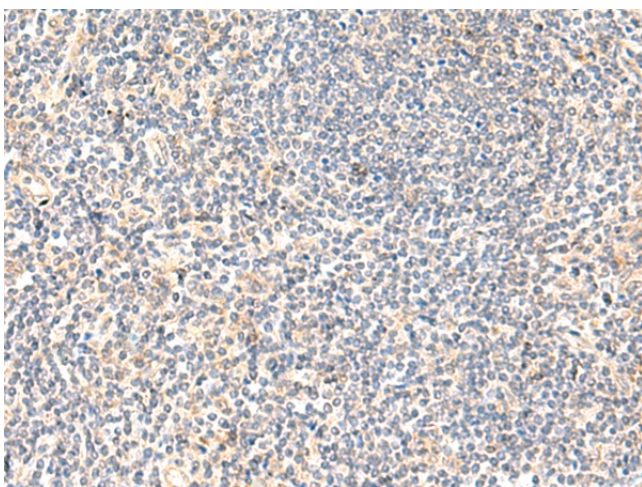
Gel: 8%SDS-PAGE
 Lysate: 40 µg
 Lane 1-3: PC3
 TM4 and RAW264.7 cell lysates
 Primary antibody: TA366214 (C19orf57 Antibody)
 at dilution 1/400
 Secondary antibody: Goat anti rabbit IgG at
 1/8000 dilution
 Exposure time: 1 minute



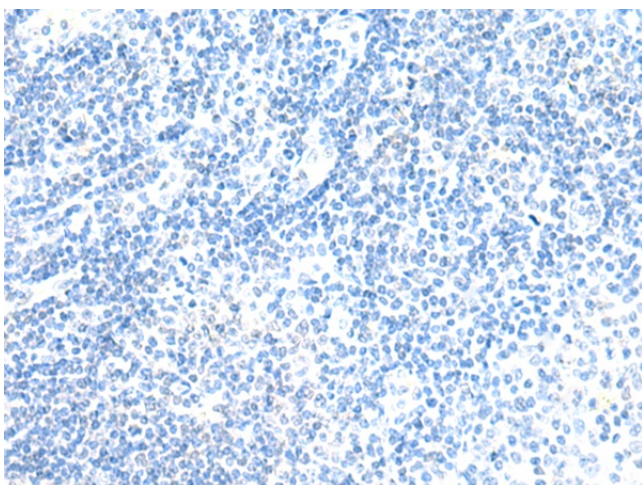
Immunohistochemistry of paraffin-embedded
 Human liver cancer tissue using TA366214
 (C19orf57 Antibody) at dilution 1/60 (Original
 magnification: ×200)



Immunohistochemistry of paraffin-embedded Human liver cancer tissue using TA366214 (C19orf57 Antibody) at dilution 1/60, treated with fusion protein. (Original magnification: ×200)



Immunohistochemistry of paraffin-embedded Human tonsil tissue using TA366214 (C19orf57 Antibody) at dilution 1/60 (Original magnification: ×200)



Immunohistochemistry of paraffin-embedded Human tonsil tissue using TA366214 (C19orf57 Antibody) at dilution 1/60, treated with fusion protein. (Original magnification: ×200)