

## Product datasheet for **TA366210S**

### **ECH1 Rabbit Polyclonal Antibody**

#### **Product data:**

Product Type:	Primary Antibodies
Applications:	IHC, WB
Recommended Dilution:	WB: 500-2000 WB positive control: HepG2, 293T and Hela cell, Human fetal liver tissue lysates IHC: 50-300 Positive control: Human thyroid cancer Predicted cell location: Cytoplasm
Reactivity:	Human, Rat
Host:	Rabbit
Isotype:	IgG
Clonality:	Polyclonal
Immunogen:	Fusion protein of human ECH1
Formulation:	pH7.4 PBS, 0.05% NaN <sub>3</sub> , 40% Glycerol
Purification:	Antigen affinity purification
Conjugation:	Unconjugated
Storage:	Store at -20°C.
Stability:	1 year
Predicted Protein Size:	36 kDa
Gene Name:	enoyl-CoA hydratase 1, peroxisomal
Database Link:	<a href="#">Entrez Gene 1891 Human Q13011</a>



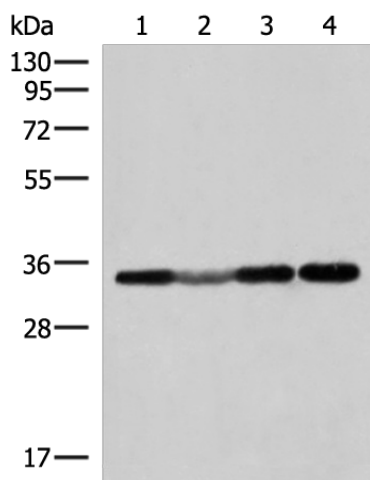
[View online »](#)

**Background:**

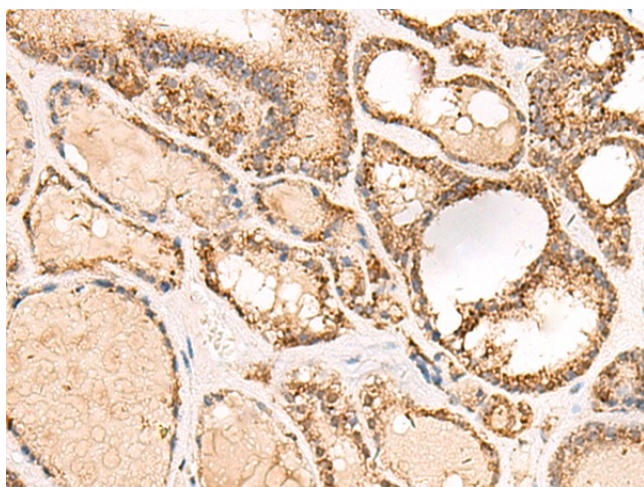
This gene encodes a member of the hydratase/isomerase superfamily. The gene product shows high sequence similarity to enoyl-coenzyme A (CoA) hydratases of several species, particularly within a conserved domain characteristic of these proteins. The encoded protein, which contains a C-terminal peroxisomal targeting sequence, localizes to the peroxisome. The rat ortholog, which localizes to the matrix of both the peroxisome and mitochondria, can isomerize 3-trans,5-cis-dienoyl-CoA to 2-trans,4-trans-dienoyl-CoA, indicating that it is a delta3,5-delta2,4-dienoyl-CoA isomerase. This enzyme functions in the auxiliary step of the fatty acid beta-oxidation pathway. Expression of the rat gene is induced by peroxisome proliferators.

**Synonyms:**

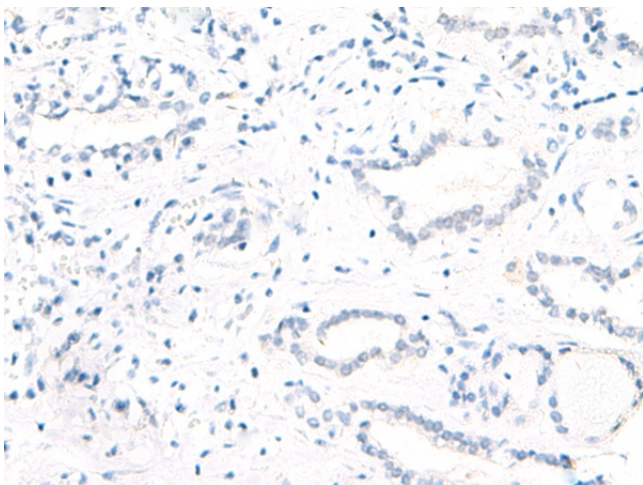
HPXEL

**Product images:**


Gel: 8%SDS-PAGE  
 Lysate: 40 µg  
 Lane 1-4: HepG2  
 293T and HeLa cell  
 Human fetal liver tissue lysates  
 Primary antibody: [TA366210] (ECH1 Antibody) at dilution 1/300  
 Secondary antibody: Goat anti rabbit IgG at 1/8000 dilution  
 Exposure time: 15 seconds



Immunohistochemistry of paraffin-embedded Human thyroid cancer tissue using [TA366210] (ECH1 Antibody) at dilution 1/50 (Original magnification: ×200)



Immunohistochemistry of paraffin-embedded Human thyroid cancer tissue using [TA366210] (ECH1 Antibody) at dilution 1/50, treated with fusion protein. (Original magnification: ×200)