

## Product datasheet for **TA366205S**

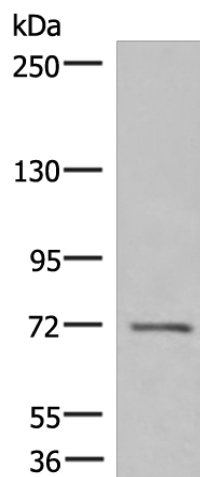
### ASTE1 Rabbit Polyclonal Antibody

#### Product data:

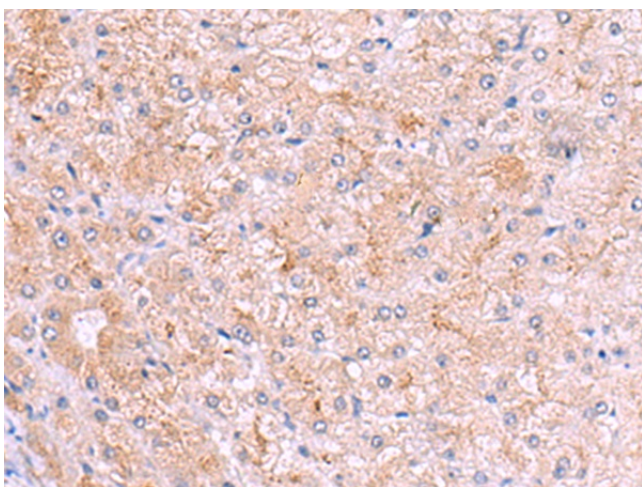
Product Type:	Primary Antibodies
Applications:	IHC, WB
Recommended Dilution:	WB: 200-1000 WB positive control: A172 cell lysate IHC: 50-300 Positive control: Human liver cancer Predicted cell location: Cytoplasm
Reactivity:	Human
Host:	Rabbit
Isotype:	IgG
Clonality:	Polyclonal
Immunogen:	Fusion protein of human ASTE1
Formulation:	pH7.4 PBS, 0.05% NaN <sub>3</sub> , 40% Glycerol
Purification:	Antigen affinity purification
Conjugation:	Unconjugated
Storage:	Store at -20°C.
Stability:	1 year
Predicted Protein Size:	77 kDa
Gene Name:	asteroid homolog 1 (Drosophila)
Database Link:	<a href="#">Entrez Gene 28990 Human Q2TB18</a>
Background:	Possible role in EGF receptor signaling.
Synonyms:	HT001; MGC129980



[View online »](#)

**Product images:**


Gel: 6%SDS-PAGE  
 Lysate: 40 µg  
 Lane: A172 cell lysate  
 Primary antibody: [TA366205] (ASTE1 Antibody)  
 at dilution 1/300  
 Secondary antibody: Goat anti rabbit IgG at  
 1/8000 dilution  
 Exposure time: 4 minutes



Immunohistochemistry of paraffin-embedded  
 Human liver cancer tissue using [TA366205]  
 (ASTE1 Antibody) at dilution 1/50. (Original  
 magnification: ×200)