

## Product datasheet for **TA366201S**

### **POLR3F Rabbit Polyclonal Antibody**

#### **Product data:**

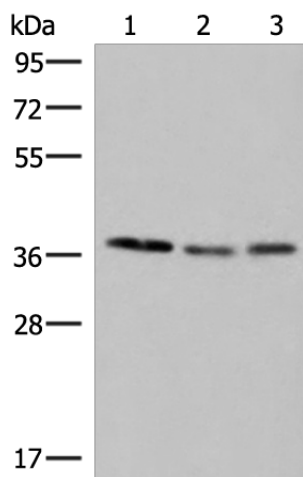
|                         |   |
|-------------------------|---|
| Product Type:           | Primary Antibodies  |
| Applications:           | IHC, WB   |
| Recommended Dilution:   | WB: 500-2000<br>WB positive control: HepG2, Hela and PC-3 cell lysates<br>IHC: 50-300<br>Positive control: Human lung cancer<br>Predicted cell location: Nucleus or Cytoplasm |
| Reactivity:             | Human, Mouse, Rat   |
| Host:                   | Rabbit  |
| Isotype:                | IgG   |
| Clonality:              | Polyclonal  |
| Immunogen:              | Fusion protein of human POLR3F  |
| Formulation:            | pH7.4 PBS, 0.05% NaN <sub>3</sub> , 40% Glycerol  |
| Purification:           | Antigen affinity purification   |
| Conjugation:            | Unconjugated  |
| Storage:                | Store at -20°C.   |
| Stability:              | 1 year  |
| Predicted Protein Size: | 36 kDa  |
| Gene Name:              | polymerase (RNA) III subunit F  |
| Database Link:          | <a href="#">Entrez Gene 10621 Human Q9H1D9</a>  |

**Background:** The protein encoded by this gene is one of more than a dozen subunits forming eukaryotic RNA polymerase III (RNA Pol III), which transcribes 5S ribosomal RNA and tRNA genes. This protein has been shown to bind both TFIIB90 and TBP, two subunits of RNA polymerase III transcription initiation factor IIIB (TFIIIB). Unlike most of the other RNA Pol III subunits, the encoded protein is unique to this polymerase. Alternative splicing results in multiple transcript variants.

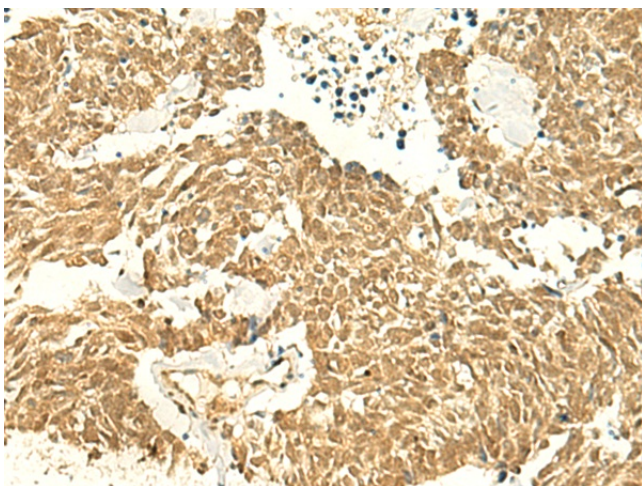
**Synonyms:** MGC13517; RPC6; RPC39



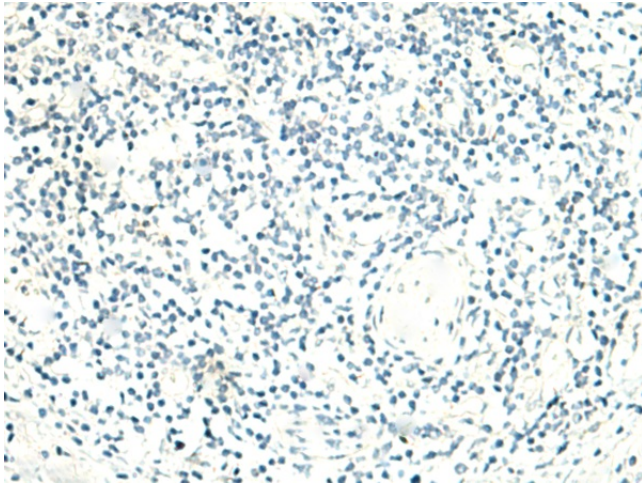
[View online »](#)

**Product images:**

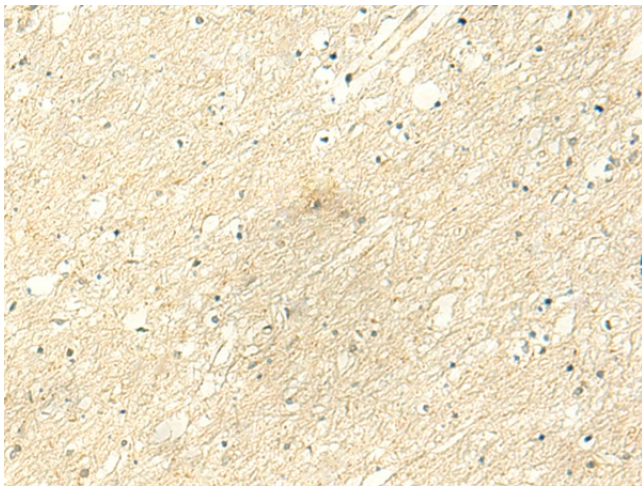
Gel: 8%SDS-PAGE  
Lysate: 40  $\mu$ g  
Lane 1-3: HepG2  
Hela and PC-3 cell lysates  
Primary antibody: [TA366201] (POLR3F Antibody)  
at dilution 1/350  
Secondary antibody: Goat anti rabbit IgG at  
1/8000 dilution  
Exposure time: 25 seconds



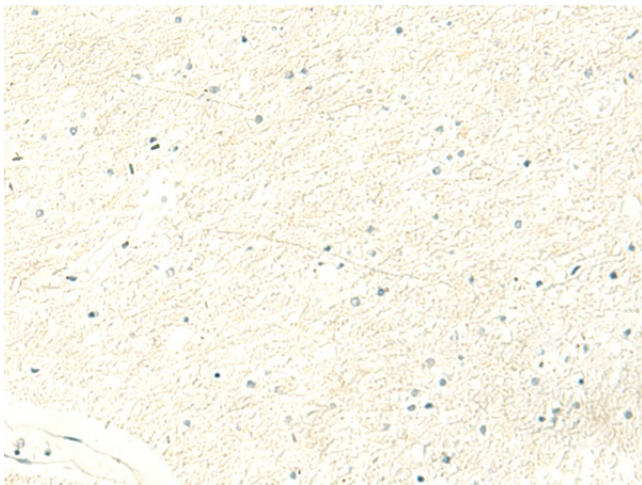
Immunohistochemistry of paraffin-embedded  
Human lung cancer tissue using [TA366201]  
(POLR3F Antibody) at dilution 1/50 (Original  
magnification:  $\times$ 200)



Immunohistochemistry of paraffin-embedded Human lung cancer tissue using [TA366201] (POLR3F Antibody) at dilution 1/50, treated with fusion protein. (Original magnification: ×200)



Immunohistochemistry of paraffin-embedded Human brain tissue using [TA366201] (POLR3F Antibody) at dilution 1/50 (Original magnification: ×200)



Immunohistochemistry of paraffin-embedded Human brain tissue using [TA366201] (POLR3F Antibody) at dilution 1/50, treated with fusion protein. (Original magnification: ×200)