

Product datasheet for **TA366196**

HMBOX1 Rabbit Polyclonal Antibody

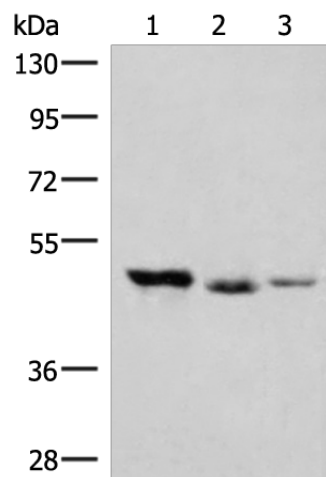
Product data:

Product Type:	Primary Antibodies
Applications:	IHC, WB
Recommended Dilution:	WB: 500-2000 WB positive control: K562 and Jurkat cell, Mouse kidney tissue lysates IHC: 50-300 Positive control: Human tonsil Predicted cell location: Cytoplasm or Nucleus
Reactivity:	Human, Mouse
Host:	Rabbit
Isotype:	IgG
Clonality:	Polyclonal
Immunogen:	Fusion protein of human HMBOX1
Formulation:	pH7.4 PBS, 0.05% NaN ₃ , 40% Glycerol
Concentration:	lot specific
Purification:	Antigen affinity purification
Conjugation:	Unconjugated
Storage:	Store at -20°C.
Stability:	1 year
Predicted Protein Size:	47 kDa
Gene Name:	homeobox containing 1
Database Link:	Entrez Gene 79618 Human Q6NT76
Background:	Transcription factor. Ubiquitous. Detected in pancreas, brain, spleen, placenta, prostate, thymus, liver, heart, bone marrow, skeletal muscle, stomach, uterus, testis, kidney, ovary, and colon.
Synonyms:	FLJ21616; HNF1LA; OTTHUMP00000163064; PBHNF



[View online »](#)

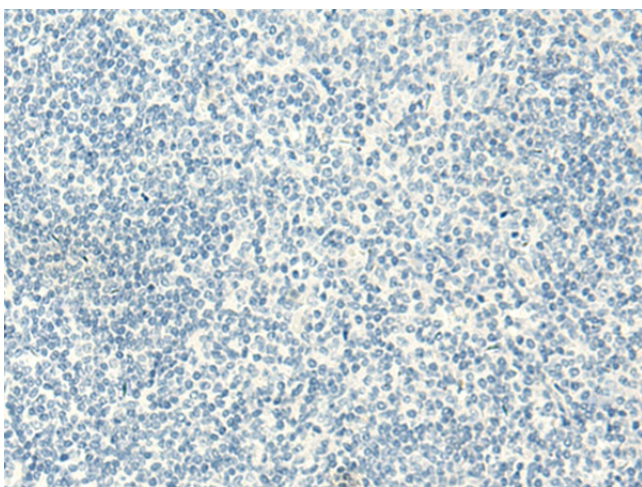
Product images:



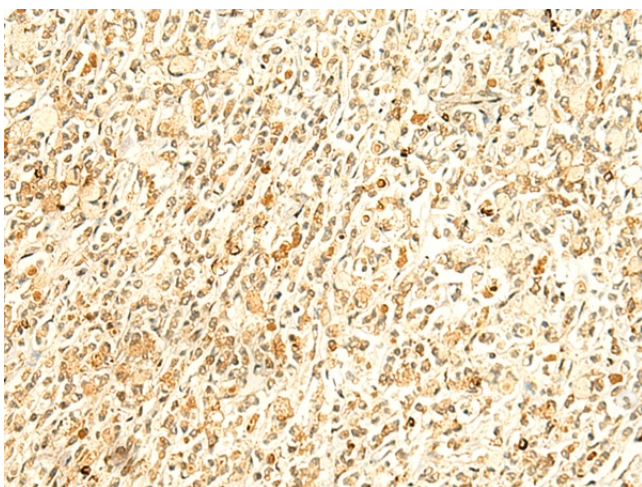
Gel: 8%SDS-PAGE
Lysate: 40 μ g
Lane 1-3: K562 and Jurkat cell
Mouse kidney tissue lysates
Primary antibody: TA366196 (HMBOX1 Antibody)
at dilution 1/500
Secondary antibody: Goat anti rabbit IgG at
1/8000 dilution
Exposure time: 2 minutes



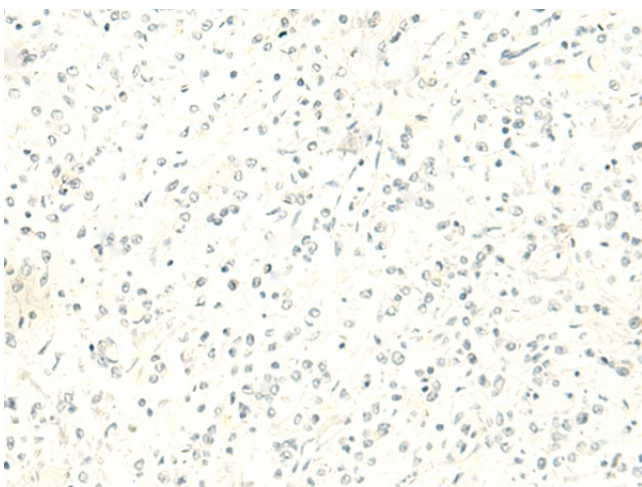
Immunohistochemistry of paraffin-embedded
Human tonsil tissue using TA366196 (HMBOX1
Antibody) at dilution 1/50 (Original magnification:
 $\times 200$)



Immunohistochemistry of paraffin-embedded Human tonsil tissue using TA366196 (HMBOX1 Antibody) at dilution 1/50, treated with fusion protein. (Original magnification: $\times 200$)



Immunohistochemistry of paraffin-embedded Human gastric cancer tissue using TA366196 (HMBOX1 Antibody) at dilution 1/50 (Original magnification: $\times 200$)



Immunohistochemistry of paraffin-embedded Human gastric cancer tissue using TA366196 (HMBOX1 Antibody) at dilution 1/50, treated with fusion protein. (Original magnification: $\times 200$)