

## Product datasheet for **TA366183S**

### KCNIP4 Rabbit Polyclonal Antibody

#### Product data:

|                         |   |
|-------------------------|---|
| Product Type:           | Primary Antibodies  |
| Applications:           | IHC, WB   |
| Recommended Dilution:   | WB: 500-2000<br>WB positive control: Human cerebrum tissue, Rat brain tissue lysates<br>IHC: 100-200<br>Positive control: Human esophagus cancer<br>Predicted cell location: Cell membrane or Cytoplasm |
| Reactivity:             | Human, Mouse, Rat   |
| Host:                   | Rabbit  |
| Isotype:                | IgG   |
| Clonality:              | Polyclonal  |
| Immunogen:              | Fusion protein of human KCNIP4  |
| Formulation:            | pH7.4 PBS, 0.05% NaN <sub>3</sub> , 40% Glycerol  |
| Purification:           | Antigen affinity purification   |
| Conjugation:            | Unconjugated  |
| Storage:                | Store at -20°C.   |
| Stability:              | 1 year  |
| Predicted Protein Size: | 29 kDa  |
| Gene Name:              | potassium voltage-gated channel interacting protein 4   |
| Database Link:          | <a href="#">Entrez Gene 80333 Human</a><br><a href="#">Q6PIL6</a>   |



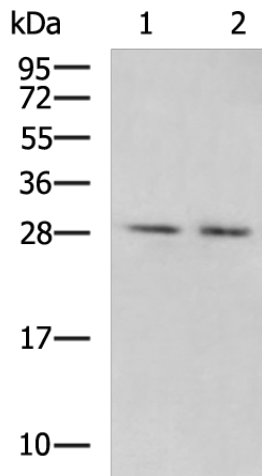
[View online »](#)

**Background:**

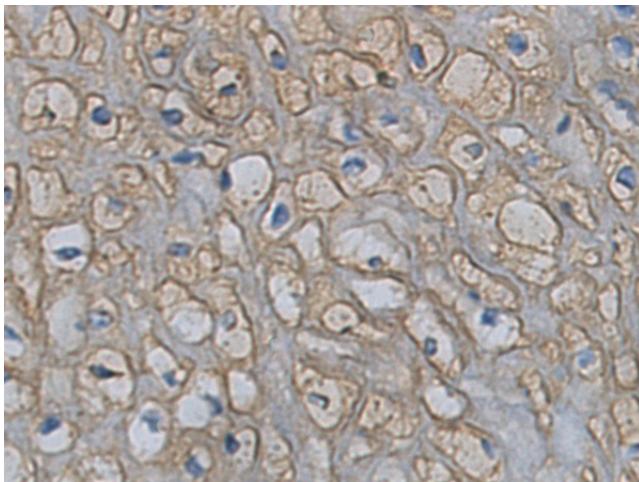
This gene encodes a member of the family of voltage-gated potassium (Kv) channel-interacting proteins (KCNIPs), which belong to the recoverin branch of the EF-hand superfamily. Members of the KCNIP family are small calcium binding proteins. They all have EF-hand-like domains, and differ from each other in the N-terminus. They are integral subunit components of native Kv4 channel complexes. They may regulate A-type currents, and hence neuronal excitability, in response to changes in intracellular calcium. This protein member also interacts with presenilin. Multiple alternatively spliced transcript variants encoding distinct isoforms have been identified for this gene.

**Synonyms:**

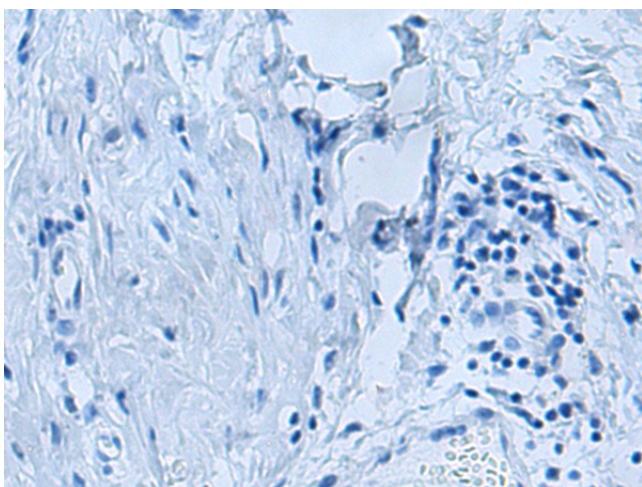
CALP; KCHIP4; MGC44947

**Product images:**


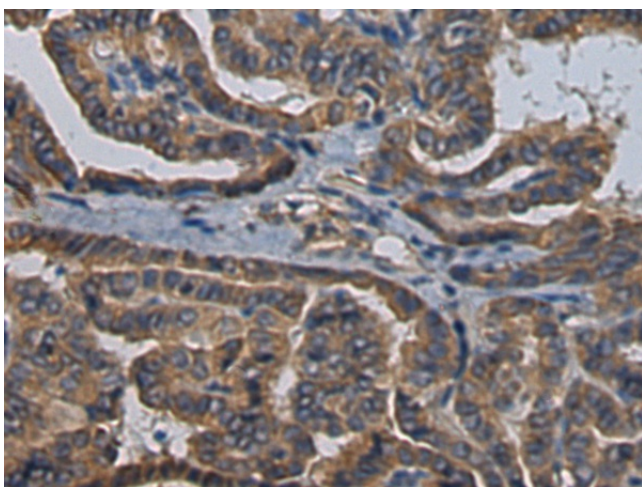
Gel: 12%SDS-PAGE  
 Lysate: 40 µg  
 Lane 1-2: Human cerebrum tissue  
 Rat brain tissue lysates  
 Primary antibody: [TA366183] (KCNIP4 Antibody)  
 at dilution 1/900  
 Secondary antibody: Goat anti rabbit IgG at  
 1/5000 dilution  
 Exposure time: 30 seconds



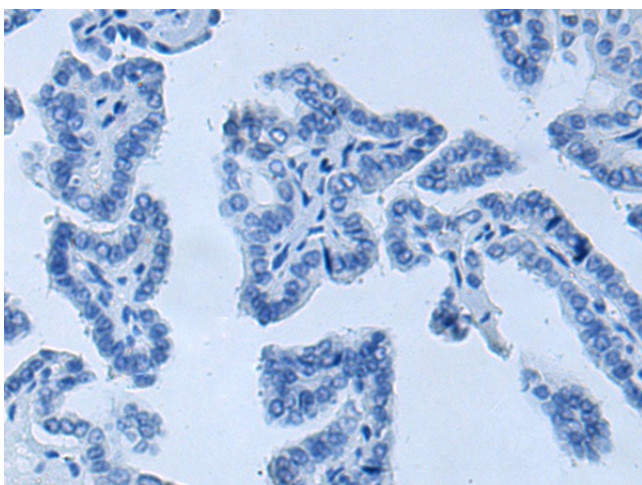
Immunohistochemistry of paraffin-embedded  
 Human esophagus cancer tissue using  
 [TA366183] (KCNIP4 Antibody) at dilution 1/120  
 (Original magnification: ×200)



Immunohistochemistry of paraffin-embedded Human esophagus cancer tissue using [TA366183] (KCNIP4 Antibody) at dilution 1/120, treated with fusion protein. (Original magnification: ×200)



Immunohistochemistry of paraffin-embedded Human thyroid cancer tissue using [TA366183] (KCNIP4 Antibody) at dilution 1/120 (Original magnification: ×200)



Immunohistochemistry of paraffin-embedded Human thyroid cancer tissue using [TA366183] (KCNIP4 Antibody) at dilution 1/120, treated with fusion protein. (Original magnification: ×200)