

## Product datasheet for **TA366178S**

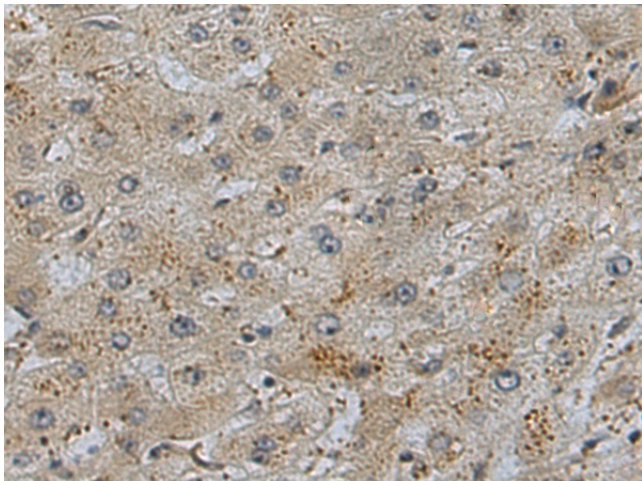
### **MAMDC2 Rabbit Polyclonal Antibody**

#### **Product data:**

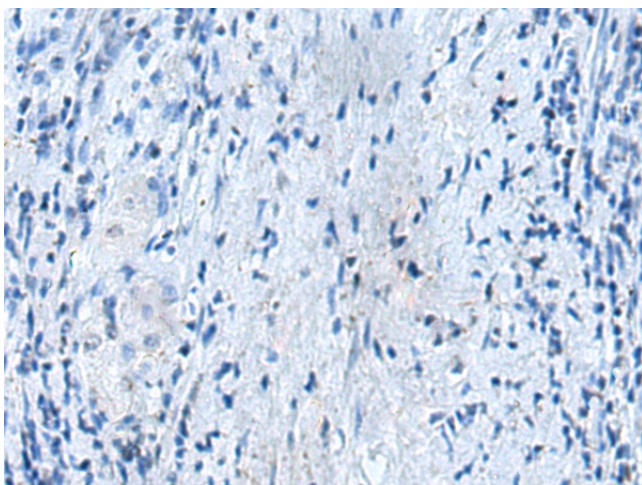
|                       |   |
|-----------------------|---|
| Product Type:         | Primary Antibodies  |
| Applications:         | IHC   |
| Recommended Dilution: | IHC: 100-200<br>Positive control: Human liver cancer<br>Predicted cell location: Secreted |
| Reactivity:           | Human, Mouse  |
| Host:                 | Rabbit  |
| Isotype:              | IgG   |
| Clonality:            | Polyclonal  |
| Immunogen:            | Fusion protein of human MAMDC2  |
| Formulation:          | pH7.4 PBS, 0.05% NaN <sub>3</sub> , 40% Glycerol  |
| Purification:         | Antigen affinity purification   |
| Conjugation:          | Unconjugated  |
| Storage:              | Store at -20°C.   |
| Stability:            | 1 year  |
| Gene Name:            | MAM domain containing 2   |
| Database Link:        | <a href="#">Entrez Gene 256691 Human Q7Z304</a>   |
| Background:           | The function of this protein remains unknown.   |
| Synonyms:             | Mamcan; MGC21981  |



[View online »](#)

**Product images:**

Immunohistochemistry of paraffin-embedded Human liver cancer tissue using [TA366178] (MAMDC2 Antibody) at dilution 1/90 (Original magnification: ×200)



Immunohistochemistry of paraffin-embedded Human liver cancer tissue using [TA366178] (MAMDC2 Antibody) at dilution 1/90, treated with fusion protein. (Original magnification: ×200)