

Product datasheet for **TA366175S**

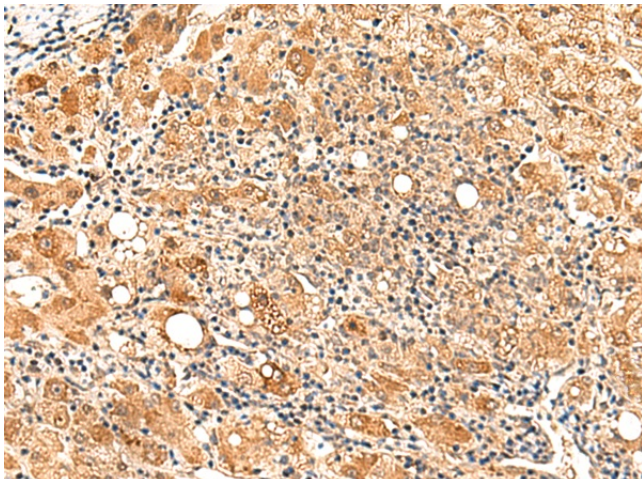
PAFAH1B2 Rabbit Polyclonal Antibody

Product data:

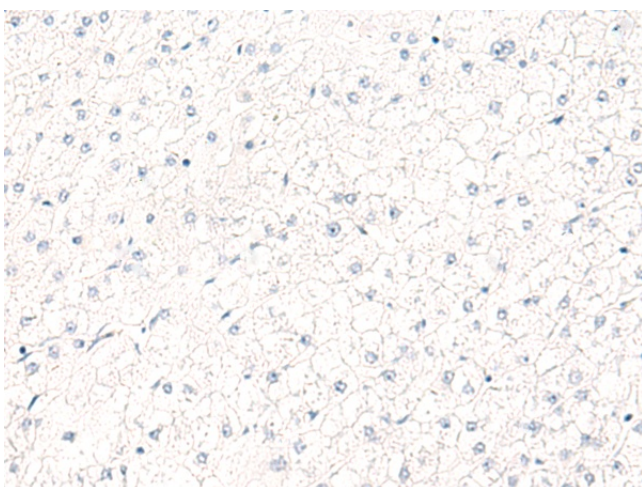
Product Type:	Primary Antibodies
Applications:	IHC
Recommended Dilution:	IHC: 50-300 Positive control: Human liver cancer Predicted cell location: Cytoplasm or Nucleus
Reactivity:	Human, Mouse, Rat
Host:	Rabbit
Isotype:	IgG
Clonality:	Polyclonal
Immunogen:	Fusion protein of human PAFAH1B2
Formulation:	pH7.4 PBS, 0.05% NaN ₃ , 40% Glycerol
Purification:	Antigen affinity purification
Conjugation:	Unconjugated
Storage:	Store at -20°C.
Stability:	1 year
Gene Name:	platelet activating factor acetylhydrolase 1b catalytic subunit 2
Database Link:	Entrez Gene 5049 Human P68402
Background:	Platelet-activating factor acetylhydrolase (PAFAH) inactivates platelet-activating factor (PAF) into acetate and LYSO-PAF. This gene encodes the beta subunit of PAFAH, the other subunits are alpha and gamma. Multiple alternatively spliced transcript variants have been described for this gene.
Synonyms:	PAFAHB



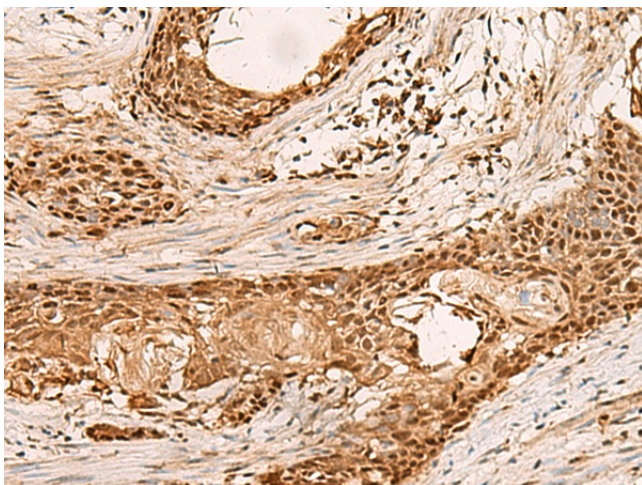
[View online »](#)

Product images:

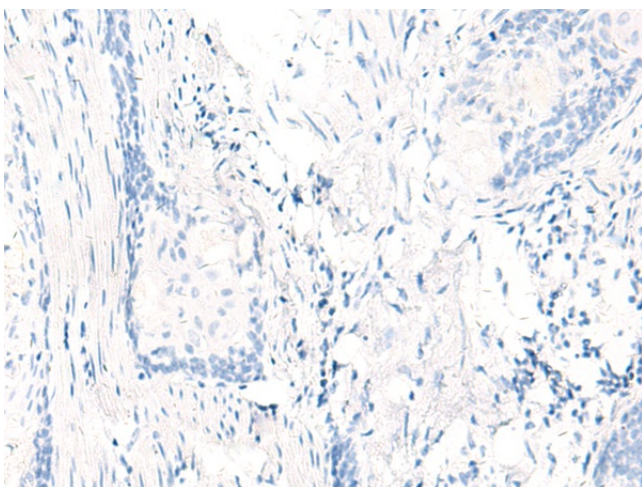
Immunohistochemistry of paraffin-embedded Human liver cancer tissue using [TA366175] (PAFAH1B2 Antibody) at dilution 1/50 (Original magnification: $\times 200$)



Immunohistochemistry of paraffin-embedded Human liver cancer tissue using [TA366175] (PAFAH1B2 Antibody) at dilution 1/50, treated with fusion protein. (Original magnification: $\times 200$)



Immunohistochemistry of paraffin-embedded Human esophagus cancer tissue using [TA366175] (PAFAH1B2 Antibody) at dilution 1/50 (Original magnification: $\times 200$)



Immunohistochemistry of paraffin-embedded Human esophagus cancer tissue using [TA366175] (PAFAH1B2 Antibody) at dilution 1/50, treated with fusion protein. (Original magnification: $\times 200$)