

Product datasheet for **TA366174**

MRPS35 Rabbit Polyclonal Antibody

Product data:

Product Type:	Primary Antibodies
Applications:	IHC, WB
Recommended Dilution:	WB: 500-2000 WB positive control: LOVO, K562, Jurkat and Hela cell lysates IHC: 50-200 Positive control: Human liver cancer Predicted cell location: Cytoplasm
Reactivity:	Human
Host:	Rabbit
Isotype:	IgG
Clonality:	Polyclonal
Immunogen:	Fusion protein of human MRPS35
Formulation:	pH7.4 PBS, 0.05% NaN ₃ , 40% Glycerol
Concentration:	lot specific
Purification:	Antigen affinity purification
Conjugation:	Unconjugated
Storage:	Store at -20°C.
Stability:	1 year
Predicted Protein Size:	37 kDa
Gene Name:	mitochondrial ribosomal protein S35
Database Link:	Entrez Gene 60488 Human P82673



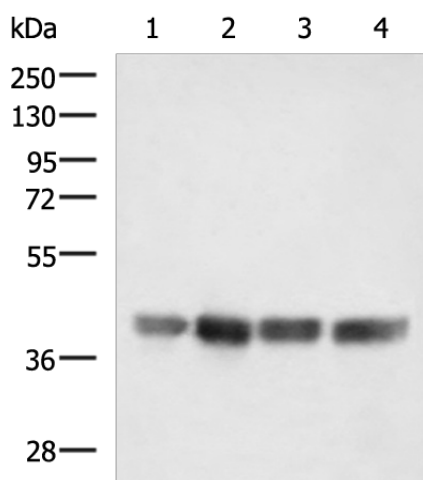
[View online »](#)

Background:

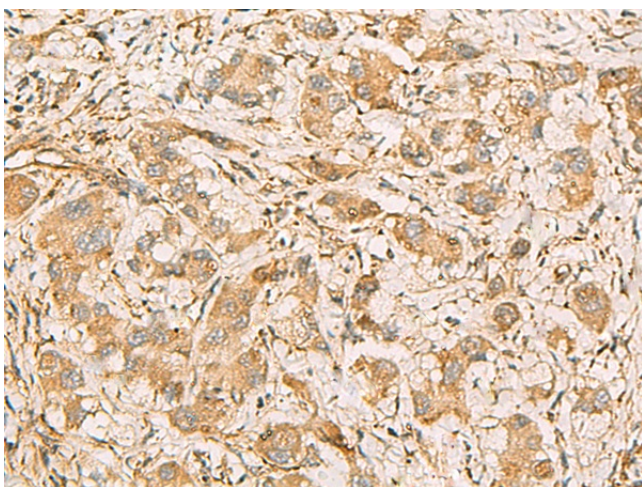
Mammalian mitochondrial ribosomal proteins are encoded by nuclear genes and help in protein synthesis within the mitochondrion. Mitochondrial ribosomes (mitoribosomes) consist of a small 28S subunit and a large 39S subunit. They have an estimated 75% protein to rRNA composition compared to prokaryotic ribosomes, where this ratio is reversed. Another difference between mammalian mitoribosomes and prokaryotic ribosomes is that the latter contain a 5S rRNA. Among different species, the proteins comprising the mitoribosome differ greatly in sequence, and sometimes in biochemical properties, which prevents easy recognition by sequence homology. This gene encodes a 28S subunit protein that has had confusing nomenclature in the literature. Alternatively spliced transcript variants encoding different isoforms have been found for this gene. Pseudogenes corresponding to this gene are found on chromosomes 3p, 5q, and 10q.

Synonyms:

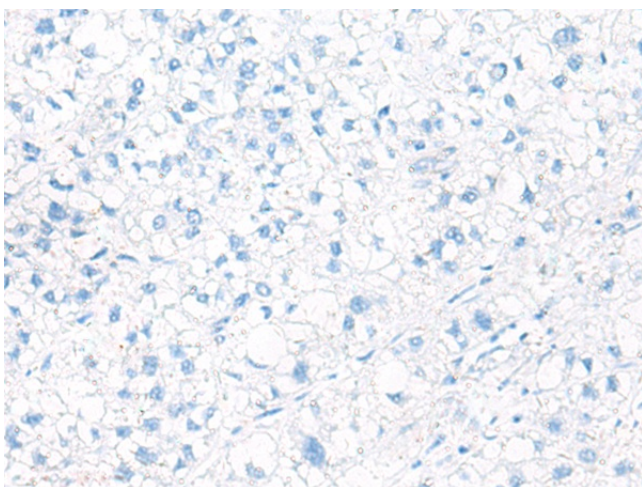
DKFZp762P093; HDCMD11P; MDS023; MGC104278; MRP-S28; MRP-S35; MRPS28; S28mt; S35mt

Product images:

Gel: 8%SDS-PAGE
Lysate: 40 µg
Lane 1-4: LOVO
K562
Jurkat and HeLa cell lysates
Primary antibody: TA366174 (MRPS35 Antibody)
at dilution 1/900
Secondary antibody: Goat anti rabbit IgG at
1/5000 dilution
Exposure time: 20 seconds



Immunohistochemistry of paraffin-embedded Human liver cancer tissue using TA366174 (MRPS35 Antibody) at dilution 1/60 (Original magnification: ×200)



Immunohistochemistry of paraffin-embedded Human liver cancer tissue using TA366174 (MRPS35 Antibody) at dilution 1/60, treated with fusion protein. (Original magnification: ×200)