

## Product datasheet for **TA366171S**

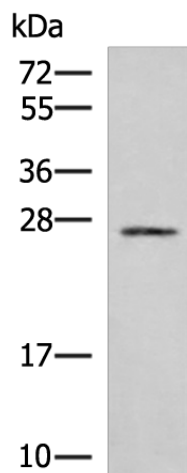
### SNRPB2 Rabbit Polyclonal Antibody

#### Product data:

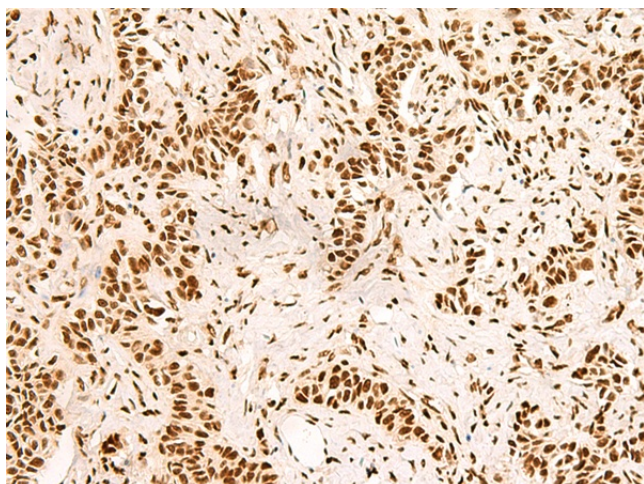
Product Type:	Primary Antibodies
Applications:	IHC, WB
Recommended Dilution:	WB: 1000-5000 WB positive control: 293T cell lysate IHC: 50-300 Positive control: Human ovarian cancer Predicted cell location: Nucleus
Reactivity:	Human, Mouse
Host:	Rabbit
Isotype:	IgG
Clonality:	Polyclonal
Immunogen:	Fusion protein of human SNRPB2
Formulation:	pH7.4 PBS, 0.05% NaN <sub>3</sub> , 40% Glycerol
Purification:	Antigen affinity purification
Conjugation:	Unconjugated
Storage:	Store at -20°C.
Stability:	1 year
Predicted Protein Size:	25 kDa
Gene Name:	small nuclear ribonucleoprotein polypeptide B2
Database Link:	<a href="#">Entrez Gene 6629 Human P08579</a>
Background:	The protein encoded by this gene associates with stem loop IV of U2 small nuclear ribonucleoprotein (U2 snRNP) in the presence of snRNP-A <sup>1</sup> . The encoded protein may play a role in pre-mRNA splicing. Autoantibodies from patients with systemic lupus erythematosus frequently recognize epitopes on the encoded protein. Two transcript variants encoding the same protein have been found for this gene.
Synonyms:	MGC24807; MGC45309



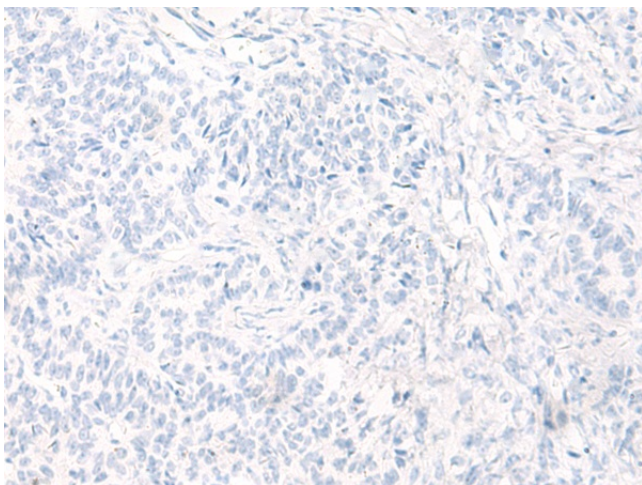
[View online »](#)

**Product images:**

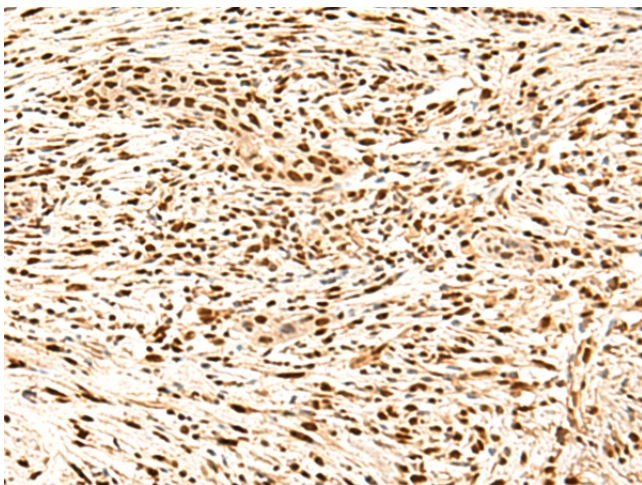
Gel: 12%SDS-PAGE  
Lysate: 40  $\mu$ g  
Lane: 293T cell lysate  
Primary antibody: [TA366171] (SNRPB2 Antibody) at dilution 1/1000  
Secondary antibody: Goat anti rabbit IgG at 1/5000 dilution  
Exposure time: 15 seconds



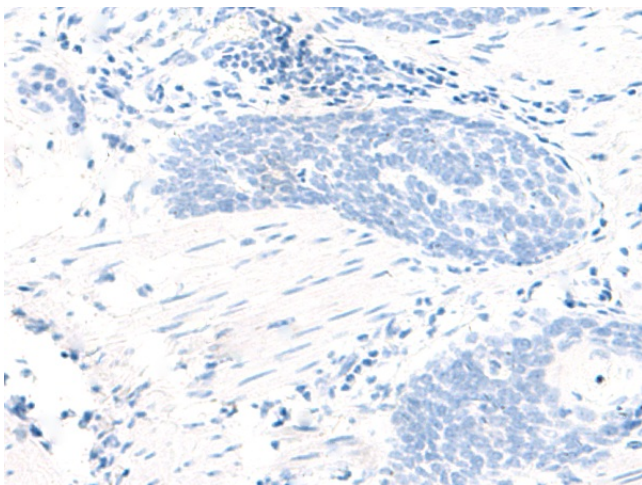
Immunohistochemistry of paraffin-embedded Human ovarian cancer tissue using [TA366171] (SNRPB2 Antibody) at dilution 1/90 (Original magnification:  $\times$ 200)



Immunohistochemistry of paraffin-embedded Human ovarian cancer tissue using [TA366171] (SNRPB2 Antibody) at dilution 1/90, treated with fusion protein. (Original magnification:  $\times 200$ )



Immunohistochemistry of paraffin-embedded Human esophagus cancer tissue using [TA366171] (SNRPB2 Antibody) at dilution 1/90 (Original magnification:  $\times 200$ )



Immunohistochemistry of paraffin-embedded Human esophagus cancer tissue using [TA366171] (SNRPB2 Antibody) at dilution 1/90, treated with fusion protein. (Original magnification:  $\times 200$ )