

Product datasheet for **TA366167S**

POP4 Rabbit Polyclonal Antibody

Product data:

| | |
|-------------------------|---|
| Product Type: | Primary Antibodies |
| Applications: | IHC, WB |
| Recommended Dilution: | WB: 200-1000 WB positive control: Human cerebella tissue lysate IHC: 50-300 Positive control: Human esophagus cancer Predicted cell location: Nucleus |
| Reactivity: | Human, Mouse, Rat |
| Host: | Rabbit |
| Isotype: | IgG |
| Clonality: | Polyclonal |
| Immunogen: | Fusion protein of human POP4 |
| Formulation: | pH7.4 PBS, 0.05% NaN ₃ , 40% Glycerol |
| Purification: | Antigen affinity purification |
| Conjugation: | Unconjugated |
| Storage: | Store at -20°C. |
| Stability: | 1 year |
| Predicted Protein Size: | 25 kDa |
| Gene Name: | POP4 homolog, ribonuclease P/MRP subunit |
| Database Link: | Entrez Gene 10775 Human O95707 |

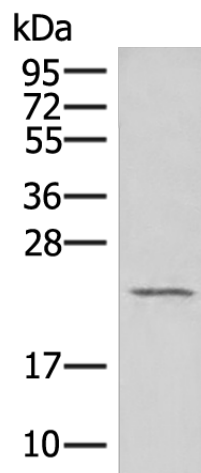
Background: This gene encodes one of the protein subunits of the small nucleolar ribonucleoprotein complexes: the endoribonuclease for mitochondrial RNA processing complex and the ribonuclease P complex. The encoded protein is localized to the nucleus and associates directly with the RNA component of these complexes. This protein is involved in processing of precursor RNAs. Alternative splicing results in multiple transcript variants.

Synonyms: hPOP4; RPP29

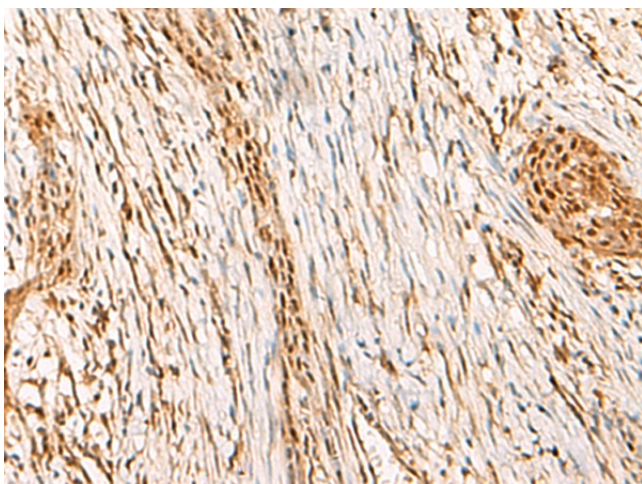


[View online »](#)

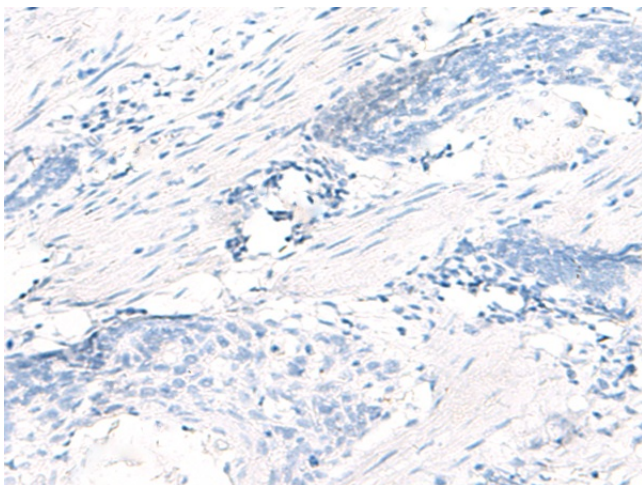
Product images:



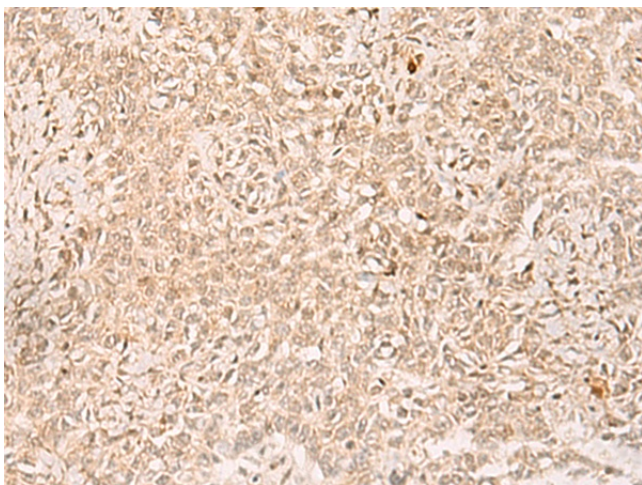
Gel: 12%SDS-PAGE
Lysate: 40 µg
Lane: Human cerebella tissue lysate
Primary antibody: [TA366167] (POP4 Antibody) at dilution 1/550
Secondary antibody: Goat anti rabbit IgG at 1/8000 dilution
Exposure time: 20 seconds



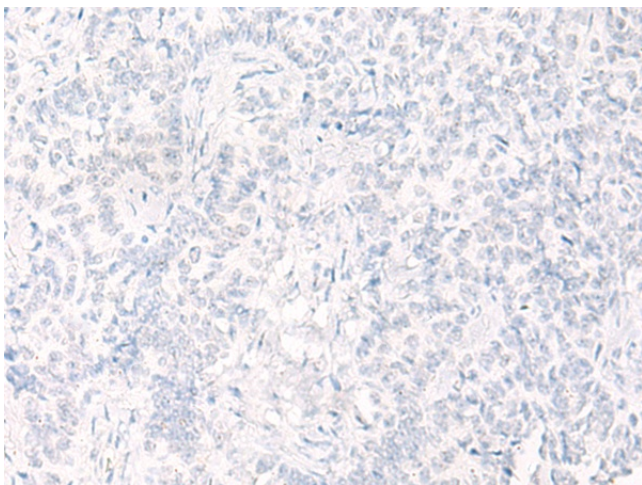
Immunohistochemistry of paraffin-embedded Human esophagus cancer tissue using [TA366167] (POP4 Antibody) at dilution 1/75 (Original magnification: x200)



Immunohistochemistry of paraffin-embedded Human esophagus cancer tissue using [TA366167] (POP4 Antibody) at dilution 1/75, treated with fusion protein. (Original magnification: $\times 200$)



Immunohistochemistry of paraffin-embedded Human ovarian cancer tissue using [TA366167] (POP4 Antibody) at dilution 1/75 (Original magnification: $\times 200$)



Immunohistochemistry of paraffin-embedded Human ovarian cancer tissue using [TA366167] (POP4 Antibody) at dilution 1/75, treated with fusion protein. (Original magnification: $\times 200$)