

## Product datasheet for **TA366164**

### SEC22L1 (SEC22B) Rabbit Polyclonal Antibody

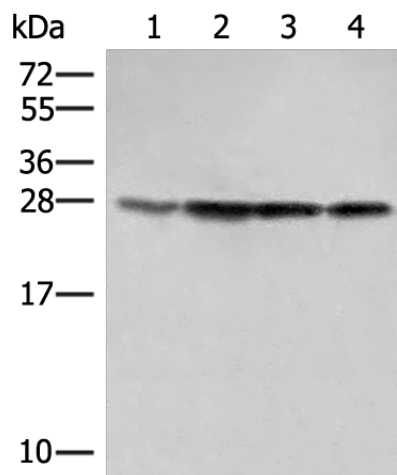
#### Product data:

Product Type:	Primary Antibodies
Applications:	IHC, WB
Recommended Dilution:	WB: 500-2000 WB positive control: 231, HeLa, LOVO and A172 cell lysates IHC: 50-300 Positive control: Human tonsil Predicted cell location: Cell membrane
Reactivity:	Human, Mouse, Rat
Host:	Rabbit
Isotype:	IgG
Clonality:	Polyclonal
Immunogen:	Fusion protein of human SEC22B
Formulation:	pH7.4 PBS, 0.05% NaN <sub>3</sub> , 40% Glycerol
Concentration:	lot specific
Purification:	Antigen affinity purification
Conjugation:	Unconjugated
Storage:	Store at -20°C.
Stability:	1 year
Predicted Protein Size:	25 kDa
Gene Name:	SEC22 homolog B, vesicle trafficking protein (gene/pseudogene)
Database Link:	<a href="#">Entrez Gene 9554 Human O75396</a>
Background:	The protein encoded by this gene is a member of the SEC22 family of vesicle trafficking proteins. It seems to complex with SNARE and it is thought to play a role in the ER-Golgi protein trafficking. This protein has strong similarity to Mus musculus and Cricetulus griseus proteins.
Synonyms:	ERS-24; ERS24; OTTHUMP00000205451; SEC22L1



[View online »](#)

## Product images:



Gel: 12%SDS-PAGE

Lysate: 40  $\mu$ g

Lane 1-4: 231

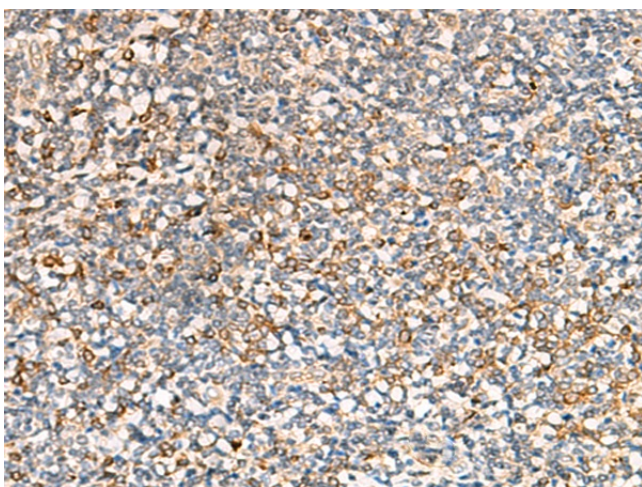
HeLa

LOVO and A172 cell lysates

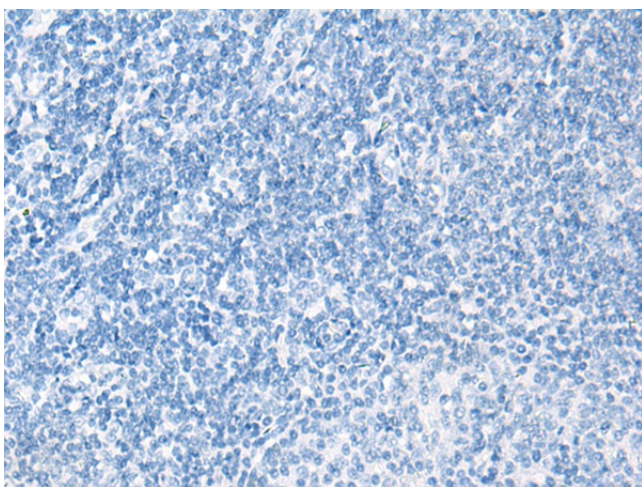
Primary antibody: TA366164 (SEC22B Antibody)  
at dilution 1/500

Secondary antibody: Goat anti rabbit IgG at  
1/8000 dilution

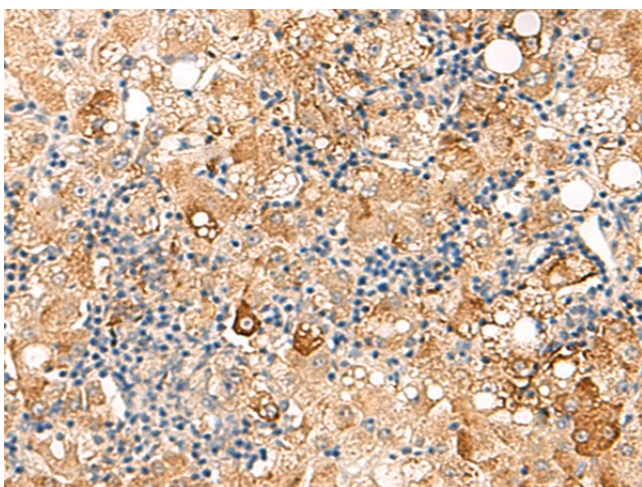
Exposure time: 10 seconds



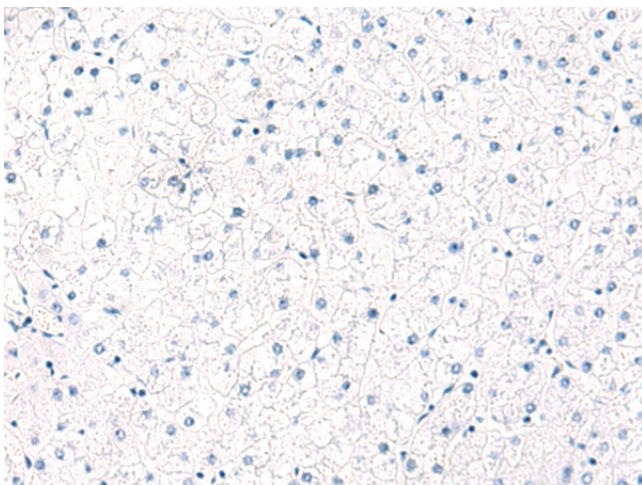
Immunohistochemistry of paraffin-embedded  
Human tonsil tissue using TA366164 (SEC22B  
Antibody) at dilution 1/70 (Original magnification:  
 $\times 200$ )



Immunohistochemistry of paraffin-embedded Human tonsil tissue using TA366164 (SEC22B Antibody) at dilution 1/70, treated with fusion protein. (Original magnification:  $\times 200$ )



Immunohistochemistry of paraffin-embedded Human liver cancer tissue using TA366164 (SEC22B Antibody) at dilution 1/70 (Original magnification:  $\times 200$ )



Immunohistochemistry of paraffin-embedded Human liver cancer tissue using TA366164 (SEC22B Antibody) at dilution 1/70, treated with fusion protein. (Original magnification:  $\times 200$ )