

## Product datasheet for **TA366163S**

### HS1BP3 Rabbit Polyclonal Antibody

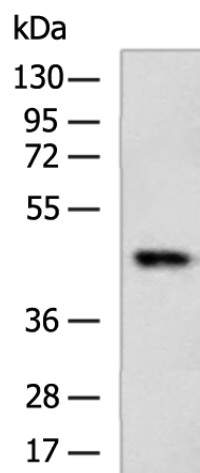
#### Product data:

Product Type:	Primary Antibodies
Applications:	IHC, WB
Recommended Dilution:	WB: 500-2000 WB positive control: A549 cell lysate IHC: 150-300 Positive control: Human liver cancer Predicted cell location: Cytoplasm
Reactivity:	Human
Host:	Rabbit
Isotype:	IgG
Clonality:	Polyclonal
Immunogen:	Fusion protein of human HS1BP3
Formulation:	pH7.4 PBS, 0.05% NaN <sub>3</sub> , 40% Glycerol
Purification:	Antigen affinity purification
Conjugation:	Unconjugated
Storage:	Store at -20°C.
Stability:	1 year
Predicted Protein Size:	43 kDa
Gene Name:	HCLS1 binding protein 3
Database Link:	<a href="#">Entrez Gene 64342 Human Q53T59</a>
Background:	The protein encoded by this gene shares similarity with mouse Hs1bp3, an Hcls1/Hs1-interacting protein that may be involved in lymphocyte activation.
Synonyms:	ETM2; FLJ14249; HS1-BP3; HSP1BP-3

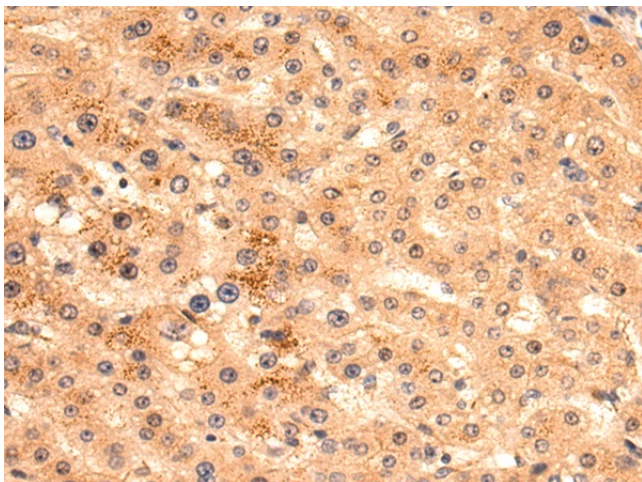


[View online »](#)

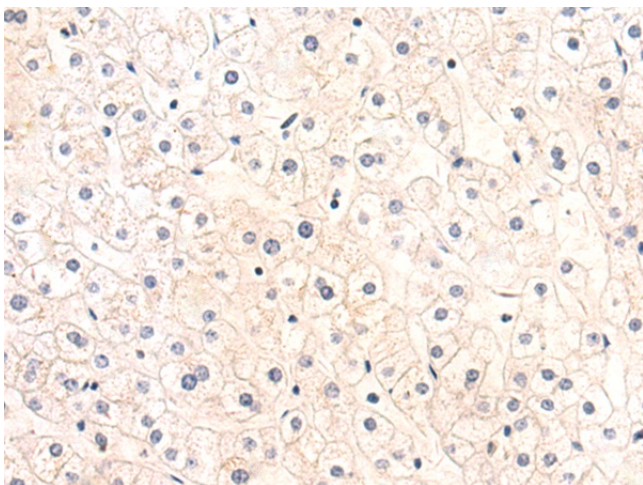
## Product images:



Gel: 8%SDS-PAGE  
Lysate: 40  $\mu$ g  
Lane: A549 cell lysate  
Primary antibody: [TA366163] (HS1BP3 Antibody) at dilution 1/900  
Secondary antibody: Goat anti rabbit IgG at 1/5000 dilution  
Exposure time: 1 minute



Immunohistochemistry of paraffin-embedded Human liver cancer tissue using [TA366163] (HS1BP3 Antibody) at dilution 1/120 (Original magnification:  $\times$ 200)



Immunohistochemistry of paraffin-embedded Human liver cancer tissue using [TA366163] (HS1BP3 Antibody) at dilution 1/120, treated with fusion protein. (Original magnification: ×200)