

## Product datasheet for **TA366158**

### RPL13A Rabbit Polyclonal Antibody

#### Product data:

Product Type:	Primary Antibodies
Applications:	IHC, WB
Recommended Dilution:	WB: 1000-5000 WB positive control: HT29, A549, HeLa and LOVO cell lysates IHC: 50-300 Positive control: Human liver cancer Predicted cell location: Cytoplasm or Nucleus
Reactivity:	Human, Mouse, Rat
Host:	Rabbit
Isotype:	IgG
Clonality:	Polyclonal
Immunogen:	Fusion protein of human RPL13A
Formulation:	pH7.4 PBS, 0.05% NaN <sub>3</sub> , 40% Glycerol
Concentration:	lot specific
Purification:	Antigen affinity purification
Conjugation:	Unconjugated
Storage:	Store at -20°C.
Stability:	1 year
Predicted Protein Size:	24 kDa
Gene Name:	ribosomal protein L13a
Database Link:	<a href="#">Entrez Gene 23521 Human P40429</a>



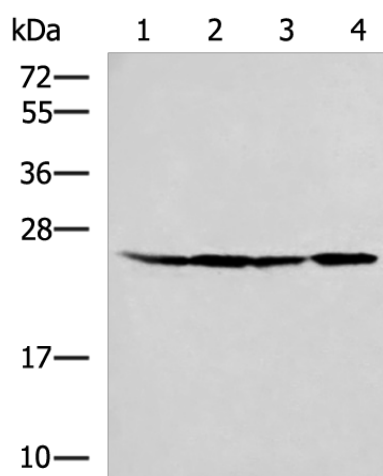
[View online »](#)

**Background:**

Ribosomes, the organelles that catalyze protein synthesis, consist of a small 40S subunit and a large 60S subunit. Together these subunits are composed of 4 RNA species and approximately 80 structurally distinct proteins. This gene encodes a member of the L13P family of ribosomal proteins that is a component of the 60S subunit. The encoded protein also plays a role in the repression of inflammatory genes as a component of the IFN-gamma-activated inhibitor of translation (GAIT) complex. This gene is co-transcribed with the small nucleolar RNA genes U32, U33, U34, and U35, which are located in the second, fourth, fifth, and sixth introns, respectively. As is typical for genes encoding ribosomal proteins, there are multiple processed pseudogenes of this gene dispersed throughout the genome. Alternatively spliced transcript variants encoding multiple isoforms have been observed for this gene.

**Synonyms:**

RPL13A

**Product images:**

Gel: 12%SDS-PAGE

Lysate: 40 µg

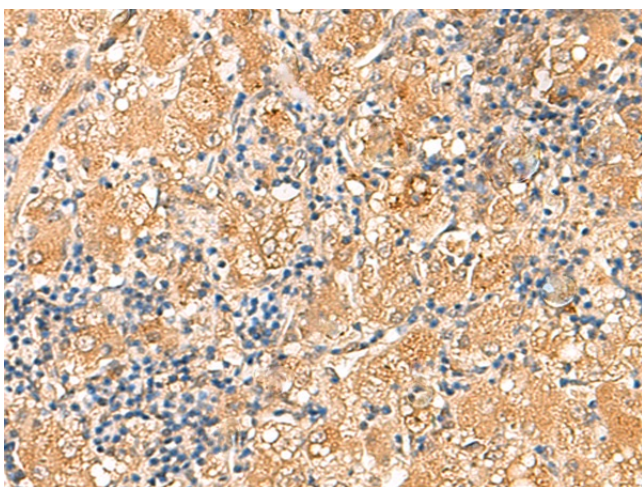
Lane 1-4: HT29

A549

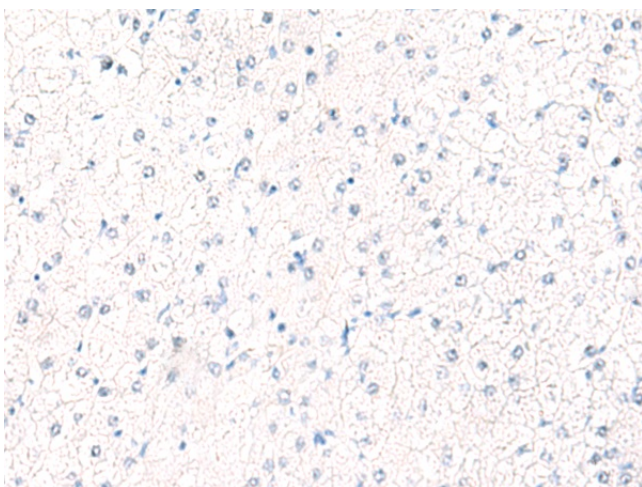
Hela and LOVO cell lysates

Primary antibody: TA366158 (RPL13A Antibody)  
at dilution 1/1000Secondary antibody: Goat anti rabbit IgG at  
1/5000 dilution

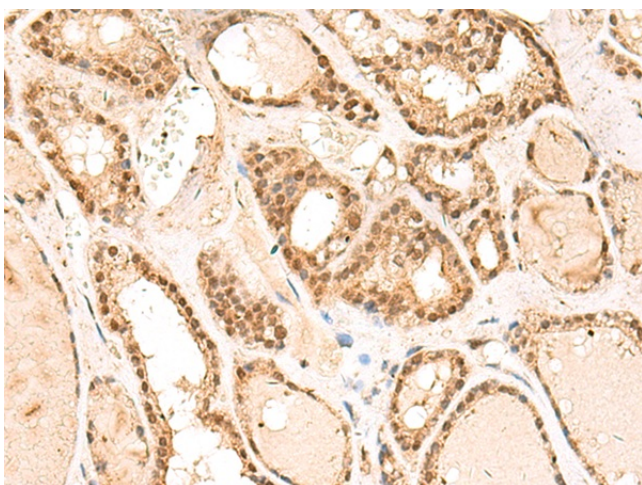
Exposure time: 7 seconds



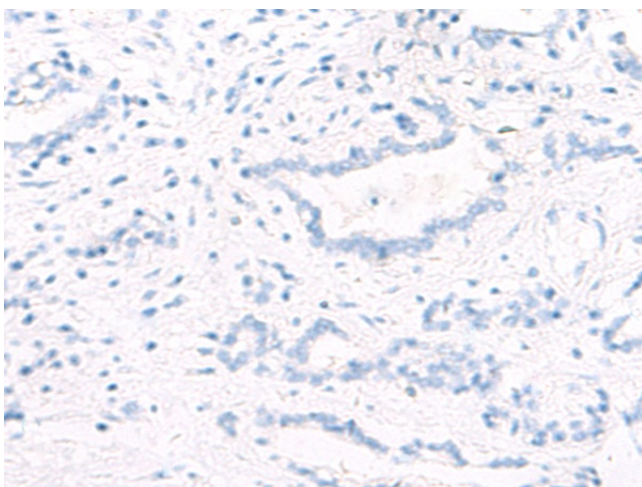
Immunohistochemistry of paraffin-embedded Human liver cancer tissue using TA366158 (RPL13A Antibody) at dilution 1/60 (Original magnification: ×200)



Immunohistochemistry of paraffin-embedded Human liver cancer tissue using TA366158 (RPL13A Antibody) at dilution 1/60, treated with fusion protein. (Original magnification: ×200)



Immunohistochemistry of paraffin-embedded Human thyroid cancer tissue using TA366158 (RPL13A Antibody) at dilution 1/60 (Original magnification: ×200)



Immunohistochemistry of paraffin-embedded Human thyroid cancer tissue using TA366158 (RPL13A Antibody) at dilution 1/60, treated with fusion protein. (Original magnification: ×200)