

## Product datasheet for **TA366153S**

### ZNRD2 Rabbit Polyclonal Antibody

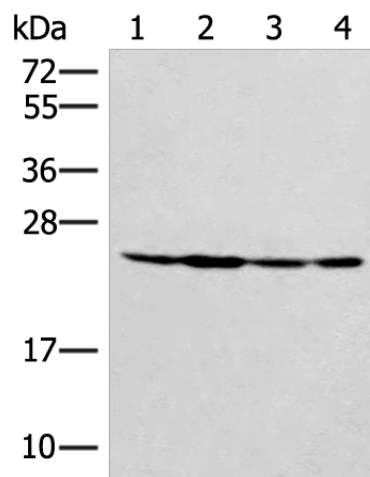
#### Product data:

Product Type:	Primary Antibodies
Applications:	IHC, WB
Recommended Dilution:	WB: 500-2000 WB positive control: Hela, 231 and A549 cell, Mouse liver tissue lysates IHC: 50-300 Positive control: Human lung cancer Predicted cell location: Cytoplasm and Nucleus
Reactivity:	Human, Mouse
Host:	Rabbit
Isotype:	IgG
Clonality:	Polyclonal
Immunogen:	Fusion protein of human ZNRD2
Formulation:	pH7.4 PBS, 0.05% NaN <sub>3</sub> , 40% Glycerol
Purification:	Antigen affinity purification
Conjugation:	Unconjugated
Storage:	Store at -20°C.
Stability:	1 year
Predicted Protein Size:	21 kDa
Gene Name:	Sjogren syndrome/scleroderma autoantigen 1
Database Link:	<a href="#">Entrez Gene 10534 Human O60232</a>
Background:	This antigen is recognized by a subset of anti-centromere antibodies from patients with scleroderma and/or Sjogren's syndrome. Subcellular localization has not yet been established. [provided by RefSeq, Jul 2008]
Synonyms:	p27

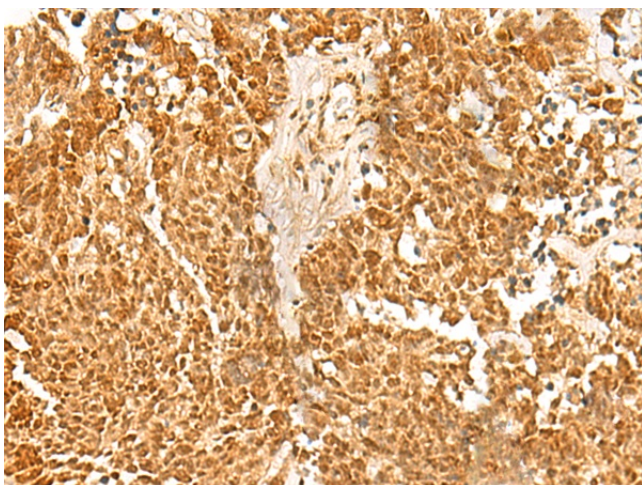


[View online »](#)

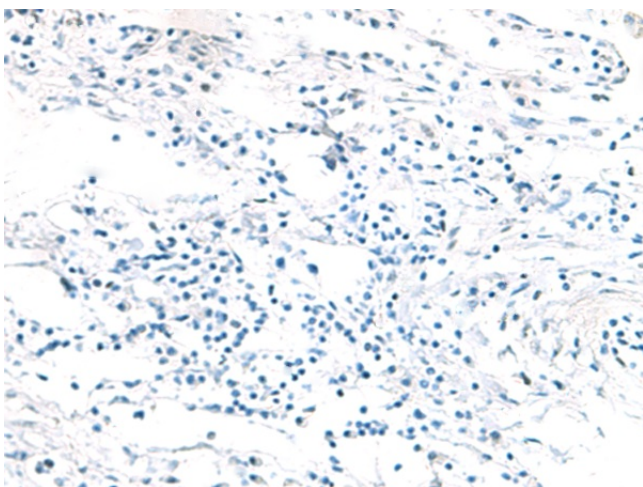
## Product images:



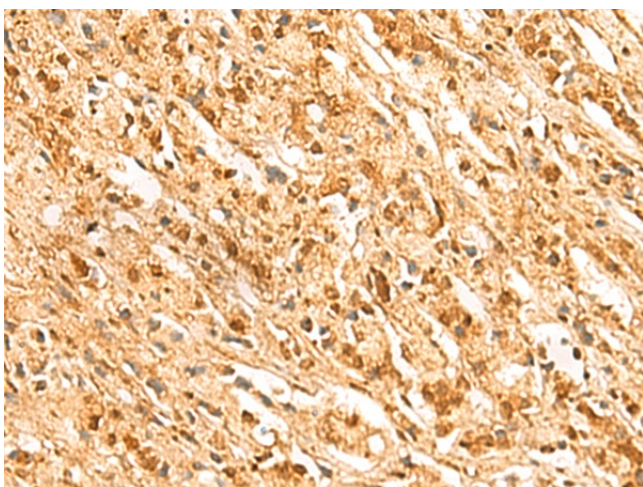
Gel: 12%SDS-PAGE  
Lysate: 40  $\mu$ g  
Lane 1-4: HeLa  
231 and A549 cell  
Mouse liver tissue lysates  
Primary antibody: [TA366153] (ZNRD2 Antibody)  
at dilution 1/400  
Secondary antibody: Goat anti rabbit IgG at  
1/8000 dilution  
Exposure time: 10 seconds



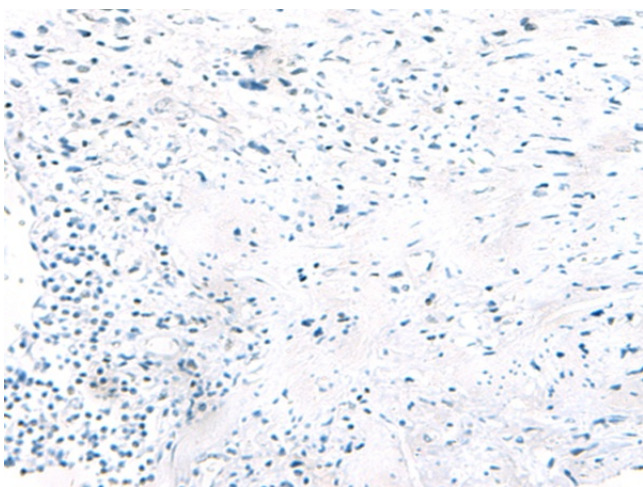
Immunohistochemistry of paraffin-embedded  
Human lung cancer tissue using [TA366153]  
(ZNRD2 Antibody) at dilution 1/50 (Original  
magnification:  $\times$ 200)



Immunohistochemistry of paraffin-embedded Human lung cancer tissue using [TA366153] (ZNRD2 Antibody) at dilution 1/50, treated with fusion protein. (Original magnification:  $\times 200$ )



Immunohistochemistry of paraffin-embedded Human prostate cancer tissue using [TA366153] (ZNRD2 Antibody) at dilution 1/50 (Original magnification:  $\times 200$ )



Immunohistochemistry of paraffin-embedded Human prostate cancer tissue using [TA366153] (ZNRD2 Antibody) at dilution 1/50, treated with fusion protein. (Original magnification:  $\times 200$ )