

Product datasheet for **TA366153**

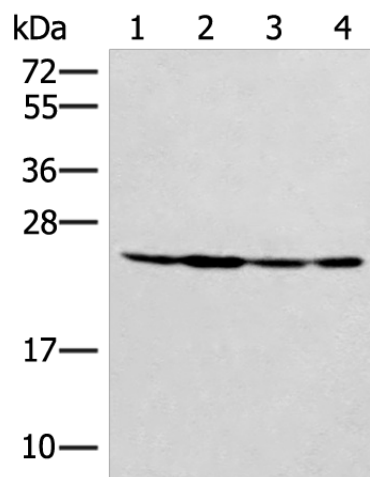
ZNRD2 Rabbit Polyclonal Antibody

Product data:

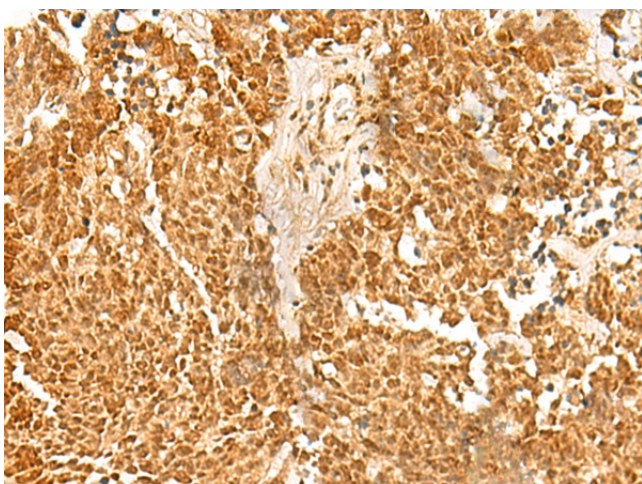
Product Type:	Primary Antibodies
Applications:	IHC, WB
Recommended Dilution:	WB: 500-2000 WB positive control: Hela, 231 and A549 cell, Mouse liver tissue lysates IHC: 50-300 Positive control: Human lung cancer Predicted cell location: Cytoplasm and Nucleus
Reactivity:	Human, Mouse
Host:	Rabbit
Isotype:	IgG
Clonality:	Polyclonal
Immunogen:	Fusion protein of human ZNRD2
Formulation:	pH7.4 PBS, 0.05% NaN ₃ , 40% Glycerol
Concentration:	lot specific
Purification:	Antigen affinity purification
Conjugation:	Unconjugated
Storage:	Store at -20°C.
Stability:	1 year
Predicted Protein Size:	21 kDa
Gene Name:	Sjogren syndrome/scleroderma autoantigen 1
Database Link:	Entrez Gene 10534 Human O60232
Background:	This antigen is recognized by a subset of anti-centromere antibodies from patients with scleroderma and/or Sjogren's syndrome. Subcellular localization has not yet been established. [provided by RefSeq, Jul 2008]
Synonyms:	p27



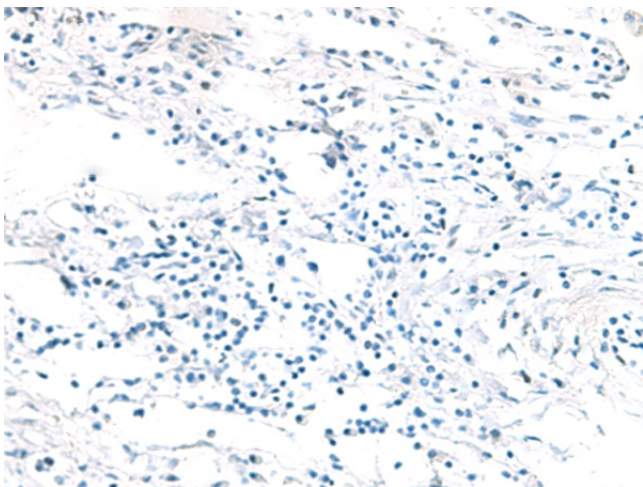
[View online »](#)

Product images:


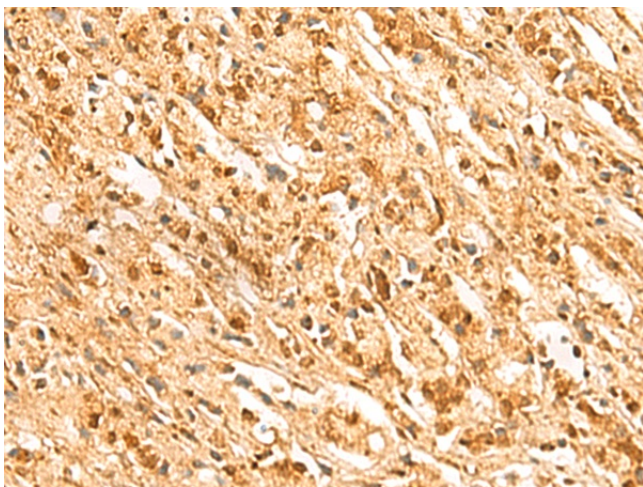
Gel: 12%SDS-PAGE
 Lysate: 40 μ g
 Lane 1-4: HeLa
 231 and A549 cell
 Mouse liver tissue lysates
 Primary antibody: TA366153 (ZNRD2 Antibody) at
 dilution 1/400
 Secondary antibody: Goat anti rabbit IgG at
 1/8000 dilution
 Exposure time: 10 seconds



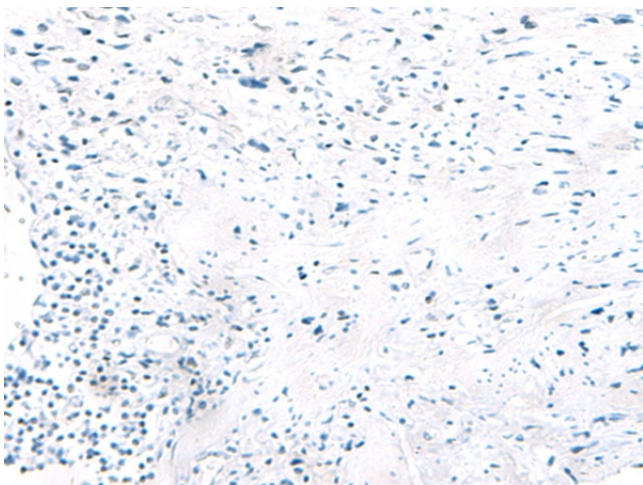
Immunohistochemistry of paraffin-embedded
 Human lung cancer tissue using TA366153
 (ZNRD2 Antibody) at dilution 1/50 (Original
 magnification: \times 200)



Immunohistochemistry of paraffin-embedded Human lung cancer tissue using TA366153 (ZNRD2 Antibody) at dilution 1/50, treated with fusion protein. (Original magnification: $\times 200$)



Immunohistochemistry of paraffin-embedded Human prostate cancer tissue using TA366153 (ZNRD2 Antibody) at dilution 1/50 (Original magnification: $\times 200$)



Immunohistochemistry of paraffin-embedded Human prostate cancer tissue using TA366153 (ZNRD2 Antibody) at dilution 1/50, treated with fusion protein. (Original magnification: $\times 200$)