

Product datasheet for **TA366141**

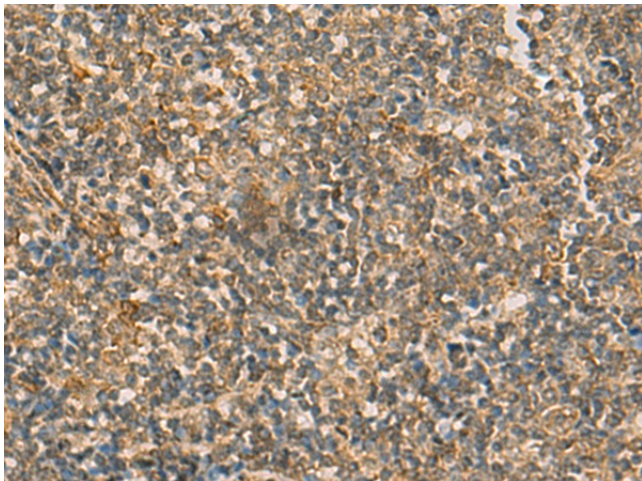
RABL5 (IFT22) Rabbit Polyclonal Antibody

Product data:

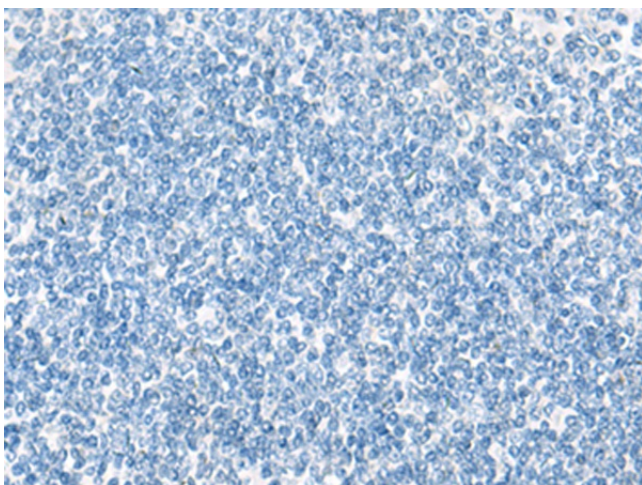
Product Type:	Primary Antibodies
Applications:	IHC
Recommended Dilution:	IHC: 50-300 Positive control: Human tonsil Predicted cell location: Cytoplasm
Reactivity:	Human, Mouse, Rat
Host:	Rabbit
Isotype:	IgG
Clonality:	Polyclonal
Immunogen:	Fusion protein of human IFT22
Formulation:	pH7.4 PBS, 0.05% NaN ₃ , 40% Glycerol
Concentration:	lot specific
Purification:	Antigen affinity purification
Conjugation:	Unconjugated
Storage:	Store at -20°C.
Stability:	1 year
Gene Name:	intraflagellar transport 22
Database Link:	Entrez Gene 64792 Human Q9H7X7
Background:	Small GTPase-like component of the intraflagellar transport (IFT) complex B.



[View online »](#)

Product images:

Immunohistochemistry of paraffin-embedded Human tonsil tissue using TA366141 (IFT22 Antibody) at dilution 1/50 (Original magnification: ×200)



Immunohistochemistry of paraffin-embedded Human tonsil tissue using TA366141 (IFT22 Antibody) at dilution 1/50, treated with fusion protein. (Original magnification: ×200)