

Product datasheet for **TA366138**

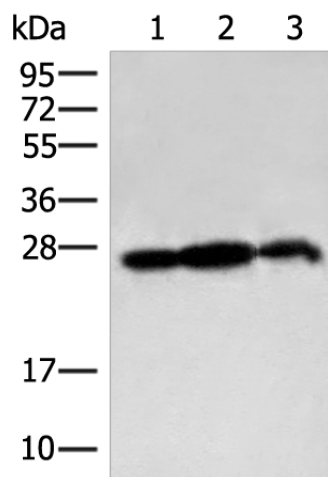
PDAP1 Rabbit Polyclonal Antibody

Product data:

Product Type:	Primary Antibodies
Applications:	IHC, WB
Recommended Dilution:	WB: 500-2000 WB positive control: 231 cell, 293T cell and Rat brain tissue lysates IHC: 50-300 Positive control: Human tonsil Predicted cell location: Cytoplasm and Cell membrane
Reactivity:	Human, Mouse, Rat
Host:	Rabbit
Isotype:	IgG
Clonality:	Polyclonal
Immunogen:	Fusion protein of human PDAP1
Formulation:	pH7.4 PBS, 0.05% NaN ₃ , 40% Glycerol
Concentration:	lot specific
Purification:	Antigen affinity purification
Conjugation:	Unconjugated
Storage:	Store at -20°C.
Stability:	1 year
Predicted Protein Size:	21 kDa
Gene Name:	PDGFA associated protein 1
Database Link:	Entrez Gene 11333 Human Q13442
Background:	The protein encoded by this gene is a phosphoprotein that may upregulate the PDGFA-stimulated growth of fibroblasts and also downregulate the mitogenicity of PDGFB. The encoded protein in rodents has been shown to bind PDGFA with a low affinity.
Synonyms:	HASPP28; PAP; PAP1

[View online »](#)

Product images:



Gel: 12%SDS-PAGE

Lysate: 40 µg

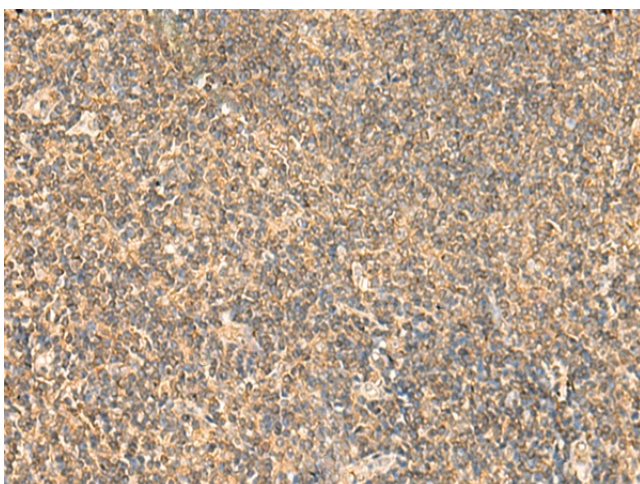
Lane 1-3: 231 cell

293T cell and Rat brain tissue lysates

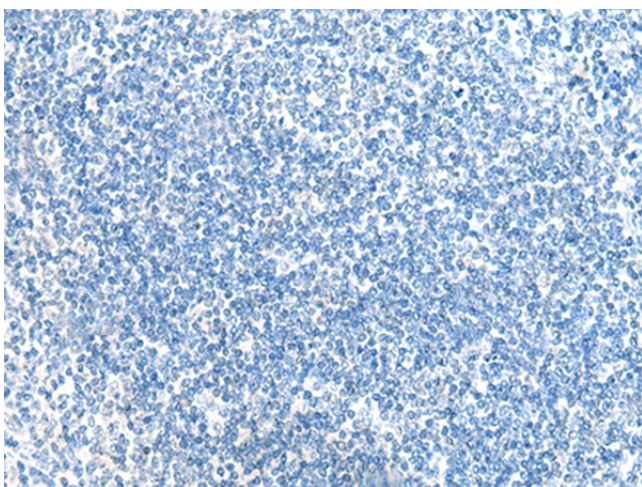
Primary antibody: TA366138 (PDAP1 Antibody) at dilution 1/400

Secondary antibody: Goat anti rabbit IgG at 1/8000 dilution

Exposure time: 2 minutes



Immunohistochemistry of paraffin-embedded Human tonsil tissue using TA366138 (PDAP1 Antibody) at dilution 1/50 (Original magnification: ×200)



Immunohistochemistry of paraffin-embedded Human tonsil tissue using TA366138 (PDAP1 Antibody) at dilution 1/50, treated with fusion protein. (Original magnification: ×200)