

Product datasheet for **TA366119S**

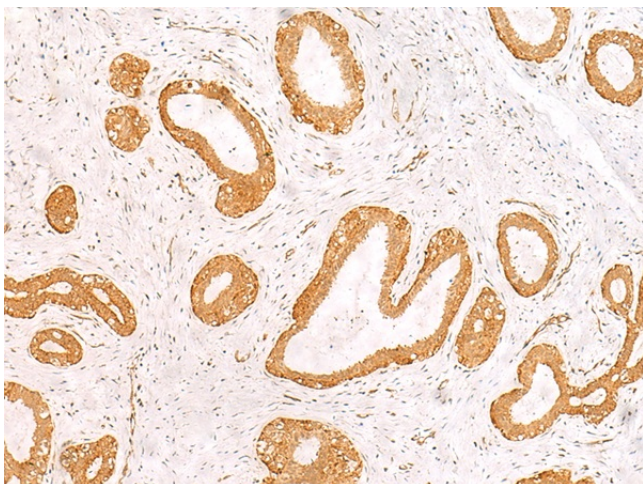
PFDN2 Rabbit Polyclonal Antibody

Product data:

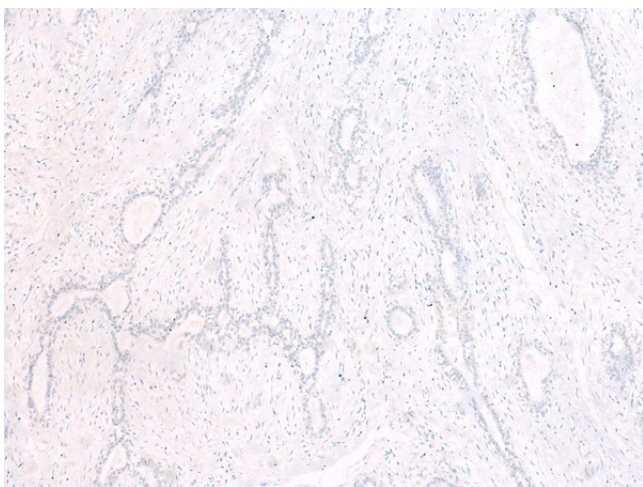
| | |
|-----------------------|---|
| Product Type: | Primary Antibodies |
| Applications: | IHC |
| Recommended Dilution: | IHC: 25-100 Positive control: Human breast cancer Predicted cell location: Cytoplasm and Nucleus |
| Reactivity: | Human, Mouse, Rat |
| Host: | Rabbit |
| Isotype: | IgG |
| Clonality: | Polyclonal |
| Immunogen: | Fusion protein of human PFDN2 |
| Formulation: | pH7.4 PBS, 0.05% NaN ₃ , 40% Glycerol |
| Purification: | Antigen affinity purification |
| Conjugation: | Unconjugated |
| Storage: | Store at -20°C. |
| Stability: | 1 year |
| Gene Name: | prefoldin subunit 2 |
| Database Link: | Entrez Gene 5202 Human Q9UHV9 |
| Background: | This gene encodes a member of the prefoldin beta subunit family. The encoded protein is one of six subunits of prefoldin, a molecular chaperone complex that binds and stabilizes newly synthesized polypeptides, thereby allowing them to fold correctly. The complex, consisting of two alpha and four beta subunits, forms a double beta barrel assembly with six protruding coiled-coils. |
| Synonyms: | PFD2 |

[View online »](#)

Product images:



Immunohistochemistry of paraffin-embedded Human breast cancer tissue using [TA366119] (PFDN2 Antibody) at dilution 1/25 (Original magnification: ×200)



Immunohistochemistry of paraffin-embedded Human breast cancer tissue using [TA366119] (PFDN2 Antibody) at dilution 1/25, treated with fusion protein. (Original magnification: ×200)