

Product datasheet for **TA366111**

Hemoglobin subunit epsilon (HBE1) Rabbit Polyclonal Antibody

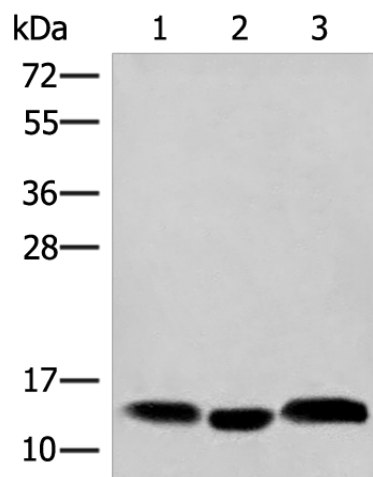
Product data:

| | |
|-------------------------|---|
| Product Type: | Primary Antibodies |
| Applications: | WB |
| Recommended Dilution: | WB: 500-2000 WB positive control: Human plasma solution, Human placenta tissue, Human gastric tissue lysates |
| Reactivity: | Human |
| Host: | Rabbit |
| Isotype: | IgG |
| Clonality: | Polyclonal |
| Immunogen: | Fusion protein of human HBE1 |
| Formulation: | pH7.4 PBS, 0.05% NaN ₃ , 40% Glycerol |
| Concentration: | lot specific |
| Purification: | Antigen affinity purification |
| Conjugation: | Unconjugated |
| Storage: | Store at -20°C. |
| Stability: | 1 year |
| Predicted Protein Size: | 16 kDa |
| Gene Name: | hemoglobin subunit epsilon 1 |
| Database Link: | Entrez Gene 3046 Human P02100 |
| Background: | The epsilon globin gene (HBE) is normally expressed in the embryonic yolk sac: two epsilon chains together with two zeta chains (an alpha-like globin) constitute the embryonic hemoglobin Hb Gower I; two epsilon chains together with two alpha chains form the embryonic Hb Gower II. Both of these embryonic hemoglobins are normally supplanted by fetal, and later, adult hemoglobin. The five beta-like globin genes are found within a 45 kb cluster on chromosome 11 in the following order: 5'-epsilon - G-gamma - A-gamma - delta - beta-3'. |
| Synonyms: | Epsilon-globin; HBE; OTTHUMP00000069642 |



[View online »](#)

Product images:



Gel: 12%SDS-PAGE
Lysate: 40 μ g
Lane 1-3: Human plasma solution
Human placenta tissue
Human gastric tissue lysates
Primary antibody: TA366111 (HBE1 Antibody) at
dilution 1/200
Secondary antibody: Goat anti rabbit IgG at
1/8000 dilution
Exposure time: 20 seconds