

Product datasheet for **TA366099**

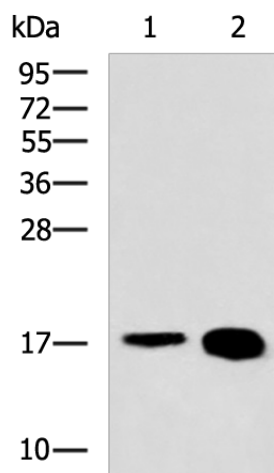
LBH Rabbit Polyclonal Antibody

Product data:

Product Type:	Primary Antibodies
Applications:	WB
Recommended Dilution:	WB: 500-2000 WB positive control: Mouse skeletal muscle tissue, Rat heart tissue lysates
Reactivity:	Human, Mouse, Rat
Host:	Rabbit
Isotype:	IgG
Clonality:	Polyclonal
Immunogen:	Fusion protein of human LBH
Formulation:	pH7.4 PBS, 0.05% NaN ₃ , 40% Glycerol
Concentration:	lot specific
Purification:	Antigen affinity purification
Conjugation:	Unconjugated
Storage:	Store at -20°C.
Stability:	1 year
Predicted Protein Size:	12 kDa
Gene Name:	limb bud and heart development
Database Link:	Entrez Gene 81606 Human Q53QV2
Background:	Transcriptional activator which may act in mitogen-activated protein kinase signaling pathway.
Synonyms:	DKFZp566J091; hLBH; MGC104312; MGC163287



[View online »](#)

Product images:

Gel: 12%SDS-PAGE
Lysate: 40 µg
Lane 1-2: Mouse skeletal muscle tissue
Rat heart tissue lysates
Primary antibody: TA366099 (LBH Antibody) at
dilution 1/800
Secondary antibody: Goat anti rabbit IgG at
1/5000 dilution
Exposure time: 2 minutes