

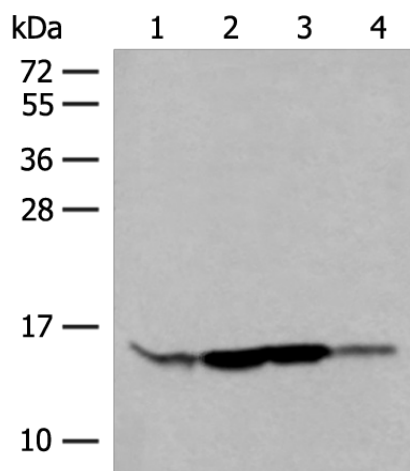
Product datasheet for **TA366096S**

RPP14 Rabbit Polyclonal Antibody

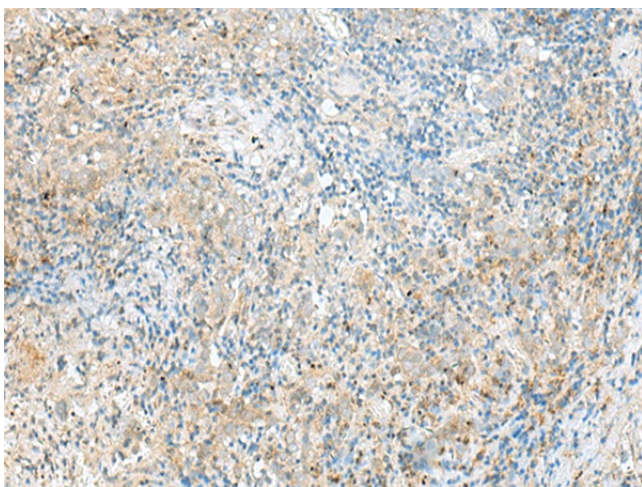
Product data:

Product Type:	Primary Antibodies
Applications:	IHC, WB
Recommended Dilution:	WB: 500-2000 WB positive control: HL60, Hela, 231 cell, Human breast cancer tissue lysates IHC: 50-300 Positive control: Human cervical cancer Predicted cell location: Cytoplasm or Nucleus
Reactivity:	Human, Mouse
Host:	Rabbit
Isotype:	IgG
Clonality:	Polyclonal
Immunogen:	Fusion protein of human RPP14
Formulation:	pH7.4 PBS, 0.05% NaN ₃ , 40% Glycerol
Purification:	Antigen affinity purification
Conjugation:	Unconjugated
Storage:	Store at -20°C.
Stability:	1 year
Predicted Protein Size:	14 kDa
Gene Name:	ribonuclease P/MRP subunit p14
Database Link:	Entrez Gene 11102 Human O95059
Background:	This gene encodes a subunit of ribonuclease P and has 3' to 5' exoribonuclease activity. Transcripts for this gene are bicistronic and include a conserved downstream open reading frame for the hydroxyacyl-thioester dehydratase type 2 (HTD2) gene.
Synonyms:	FLJ31508; HsHTD2; P14

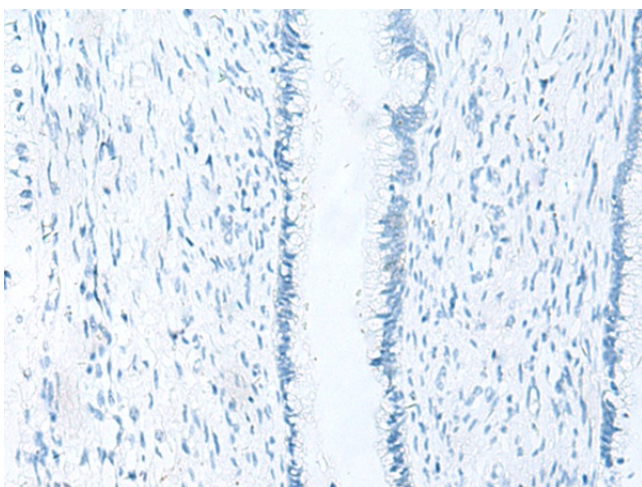
[View online »](#)

Product images:


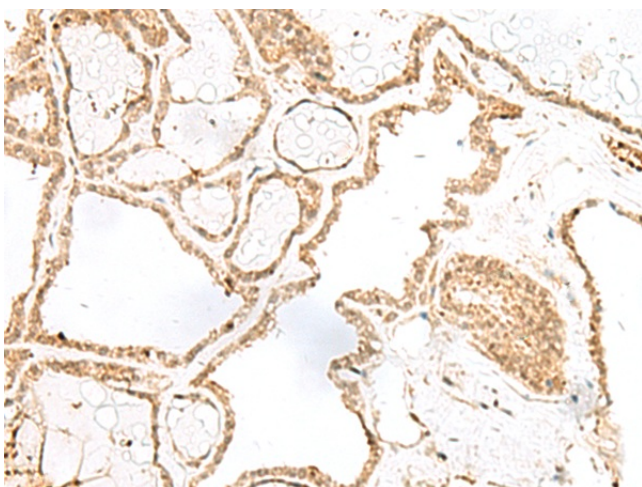
Gel: 12%SDS-PAGE
 Lysate: 40 µg
 Lane 1-4: HL60
 Hela
 231 cell
 Human breast cancer tissue lysates
 Primary antibody: [TA366096] (RPP14 Antibody)
 at dilution 1/400
 Secondary antibody: Goat anti rabbit IgG at
 1/8000 dilution
 Exposure time: 30 seconds



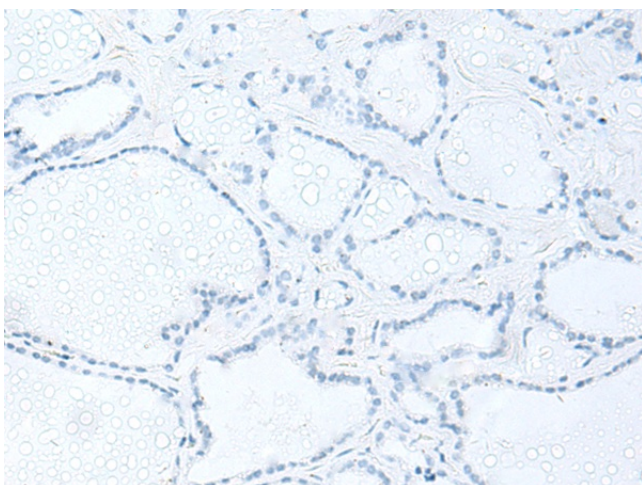
Immunohistochemistry of paraffin-embedded
 Human cervical cancer tissue using [TA366096]
 (RPP14 Antibody) at dilution 1/60 (Original
 magnification: ×200)



Immunohistochemistry of paraffin-embedded Human cervical cancer tissue using [TA366096] (RPP14 Antibody) at dilution 1/60, treated with fusion protein. (Original magnification: ×200)



Immunohistochemistry of paraffin-embedded Human thyroid cancer tissue using [TA366096] (RPP14 Antibody) at dilution 1/60 (Original magnification: ×200)



Immunohistochemistry of paraffin-embedded Human thyroid cancer tissue using [TA366096] (RPP14 Antibody) at dilution 1/60, treated with fusion protein. (Original magnification: ×200)