

## Product datasheet for **TA366085**

### **KIAA0090 (EMC1) Rabbit Polyclonal Antibody**

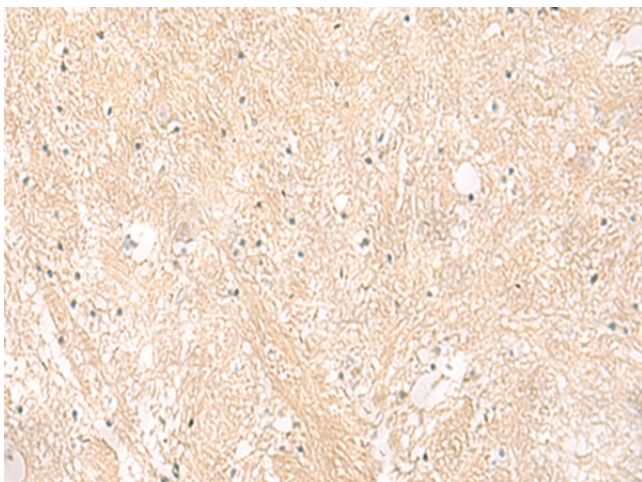
#### **Product data:**

Product Type:	Primary Antibodies
Applications:	IHC
Recommended Dilution:	IHC: 30-150 Positive control: Human brain Predicted cell location: Cytoplasm or Cell membrane
Reactivity:	Human, Mouse, Rat
Host:	Rabbit
Isotype:	IgG
Clonality:	Polyclonal
Immunogen:	Fusion protein of human EMC1
Formulation:	pH7.4 PBS, 0.05% NaN <sub>3</sub> , 40% Glycerol
Concentration:	lot specific
Purification:	Antigen affinity purification
Conjugation:	Unconjugated
Storage:	Store at -20°C.
Stability:	1 year
Gene Name:	ER membrane protein complex subunit 1
Database Link:	<a href="#">Entrez Gene 23065 Human</a> <a href="#">Q8N766</a>
Background:	This gene encodes a single-pass type I transmembrane protein, which is a subunit of the endoplasmic reticulum membrane protein complex (EMC). Multiple alternatively spliced transcript variants encoding different isoforms have been found for this gene.
Synonyms:	2700016F22Rik; C230096C10Rik; Kiaa0090; mKIAA0090; RGD1310427; RP23-371E13.1

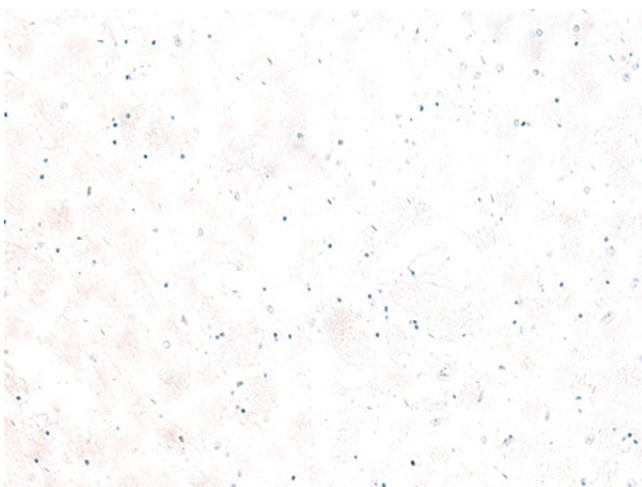


[View online »](#)

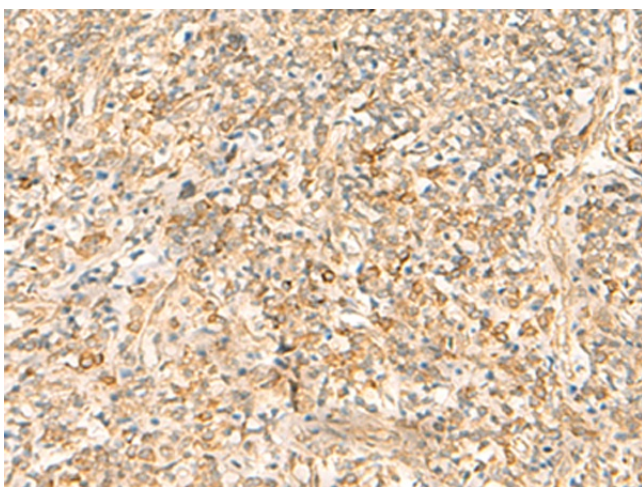
## Product images:



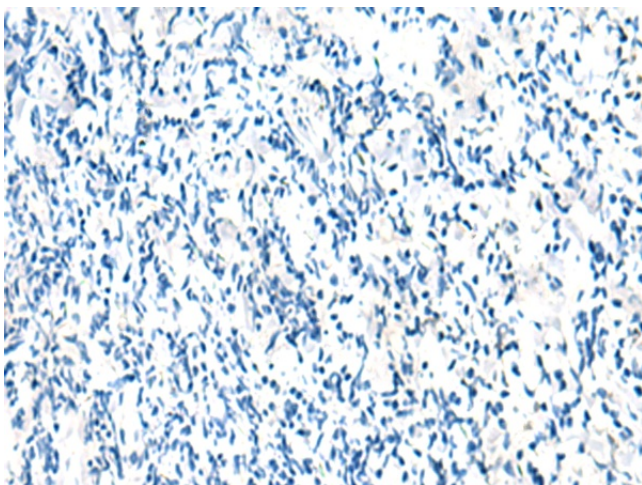
Immunohistochemistry of paraffin-embedded Human brain tissue using TA366085 (EMC1 Antibody) at dilution 1/35 (Original magnification: ×200)



Immunohistochemistry of paraffin-embedded Human brain tissue using TA366085 (EMC1 Antibody) at dilution 1/35, treated with fusion protein. (Original magnification: ×200)



Immunohistochemistry of paraffin-embedded Human tonsil tissue using TA366085 (EMC1 Antibody) at dilution 1/35 (Original magnification: ×200)



Immunohistochemistry of paraffin-embedded Human tonsil tissue using TA366085 (EMC1 Antibody) at dilution 1/35, treated with fusion protein. (Original magnification: ×200)