

Product datasheet for **TA366082**

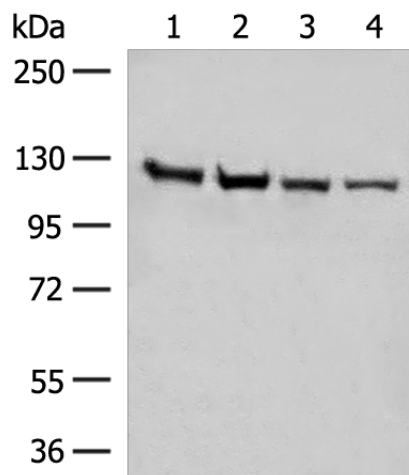
IPO11 Rabbit Polyclonal Antibody

Product data:

Product Type:	Primary Antibodies
Applications:	IHC, WB
Recommended Dilution:	WB: 500-2000 WB positive control: Human fetal brain tissue, K562 cell, Hela and A172 cell lysates IHC: 40-200 Positive control: Human thyroid cancer Predicted cell location: Nucleus
Reactivity:	Human, Mouse
Host:	Rabbit
Isotype:	IgG
Clonality:	Polyclonal
Immunogen:	Fusion protein of human IPO11
Formulation:	pH7.4 PBS, 0.05% NaN ₃ , 40% Glycerol
Concentration:	lot specific
Purification:	Antigen affinity purification
Conjugation:	Unconjugated
Storage:	Store at -20°C.
Stability:	1 year
Predicted Protein Size:	113 kDa
Gene Name:	importin 11
Database Link:	Entrez Gene 51194 Human Q9UI26
Background:	Importins, including IPO11, are a members of the karyopherin/importin-beta family of transport receptors (see KPNB1; 602738) that mediate nucleocytoplasmic transport of protein and RNA cargoes (Plafker and Macara, 2000 [PubMed 11032817]).
Synonyms:	Imp11; RanBP11; SLRN



[View online »](#)

Product images:

Gel: 6%SDS-PAGE

Lysate: 40 μ g

Lane 1-4: Human fetal brain tissue

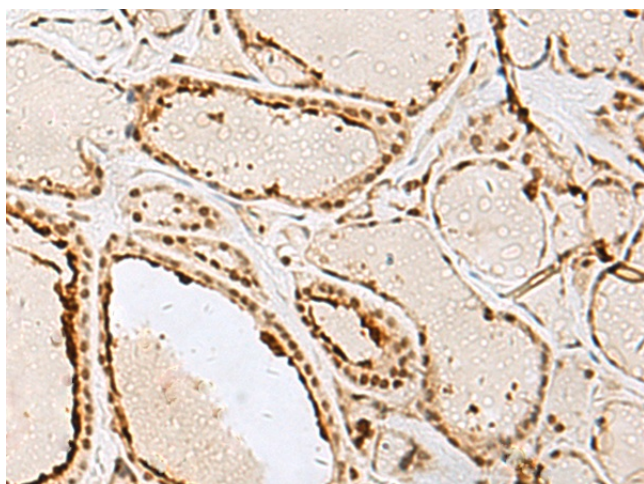
K562 cell

Hela and A172 cell lysates

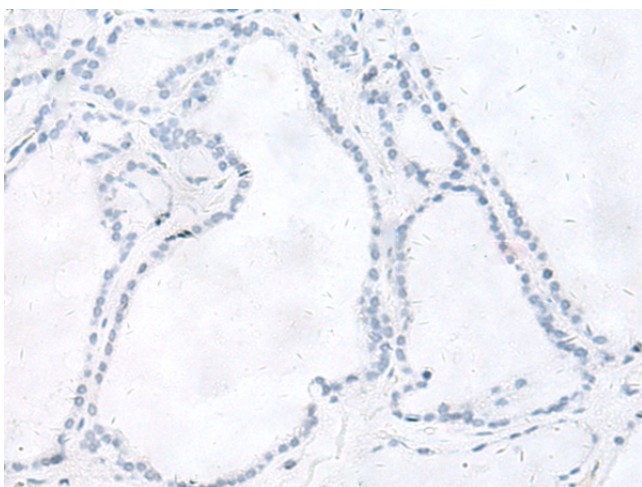
Primary antibody: TA366082 (IPO11 Antibody) at dilution 1/450

Secondary antibody: Goat anti rabbit IgG at 1/8000 dilution

Exposure time: 10 seconds



Immunohistochemistry of paraffin-embedded Human thyroid cancer tissue using TA366082 (IPO11 Antibody) at dilution 1/65 (Original magnification: \times 200)



Immunohistochemistry of paraffin-embedded Human thyroid cancer tissue using TA366082 (IPO11 Antibody) at dilution 1/65, treated with fusion protein. (Original magnification: ×200)