

Product datasheet for **TA366079**

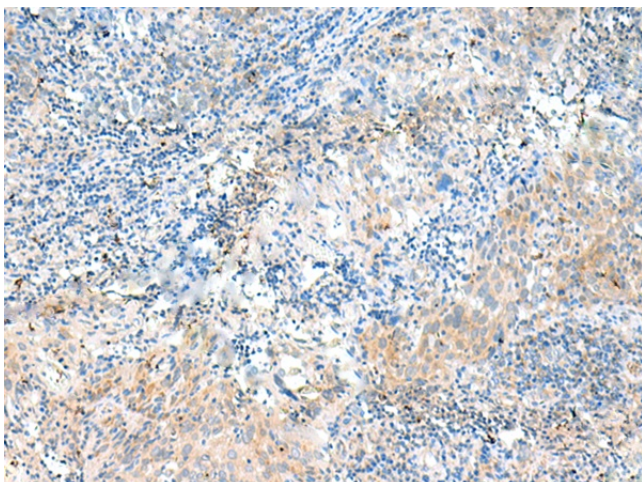
Nidogen 2 (NID2) Rabbit Polyclonal Antibody

Product data:

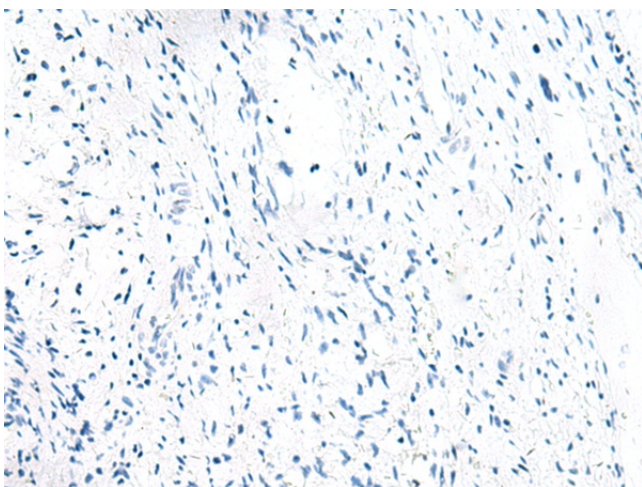
Product Type:	Primary Antibodies
Applications:	IHC
Recommended Dilution:	IHC: 20-100 Positive control: Human cervical cancer Predicted cell location: Cytoplasm
Reactivity:	Human, Mouse, Rat
Host:	Rabbit
Isotype:	IgG
Clonality:	Polyclonal
Immunogen:	Fusion protein of human NID2
Formulation:	pH7.4 PBS, 0.05% NaN ₃ , 40% Glycerol
Concentration:	lot specific
Purification:	Antigen affinity purification
Conjugation:	Unconjugated
Storage:	Store at -20°C.
Stability:	1 year
Gene Name:	nidogen 2
Database Link:	Entrez Gene 22795 Human Q14112
Background:	This gene encodes a member of the nidogen family of basement membrane proteins. This protein is a cell-adhesion protein that binds collagens I and IV and laminin and may be involved in maintaining the structure of the basement membrane.
Synonyms:	NID-2; osteonidogen



[View online »](#)

Product images:

Immunohistochemistry of paraffin-embedded Human cervical cancer tissue using TA366079 (NID2 Antibody) at dilution 1/50 (Original magnification: $\times 200$)



Immunohistochemistry of paraffin-embedded Human cervical cancer tissue using TA366079 (NID2 Antibody) at dilution 1/50, treated with fusion protein. (Original magnification: $\times 200$)