

Product datasheet for **TA366060**

CFAP47 Rabbit Polyclonal Antibody

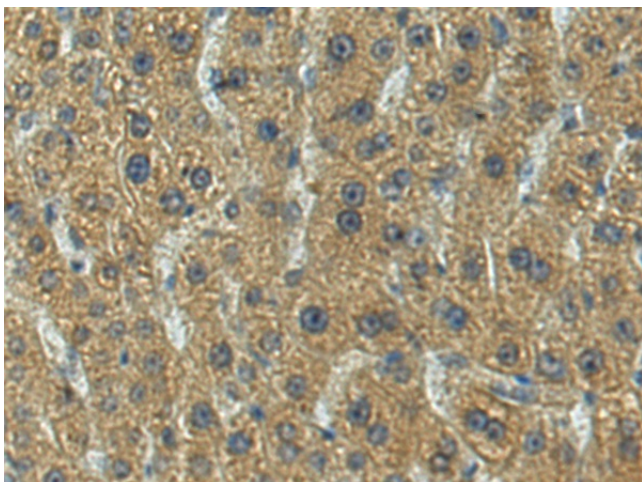
Product data:

Product Type:	Primary Antibodies
Applications:	IHC
Recommended Dilution:	IHC: 150-300 Positive control: Human liver cancer Predicted cell location: Cytoplasm
Reactivity:	Human
Host:	Rabbit
Isotype:	IgG
Clonality:	Polyclonal
Immunogen:	Fusion protein of human CFAP47
Formulation:	pH7.4 PBS, 0.05% NaN ₃ , 40% Glycerol
Concentration:	lot specific
Purification:	Antigen affinity purification
Conjugation:	Unconjugated
Storage:	Store at -20°C.
Stability:	1 year
Gene Name:	cilia and flagella associated protein 47
Database Link:	Entrez Gene 286464 Human Q6ZTR5
Background:	The function of this protein remains unknown.

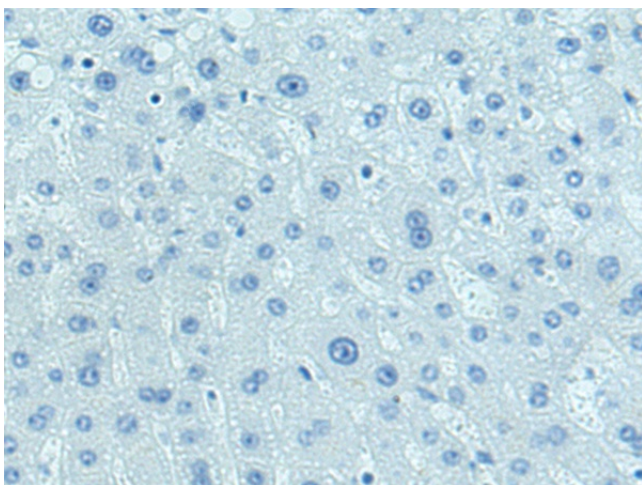


[View online »](#)

Product images:



Immunohistochemistry of paraffin-embedded Human liver cancer tissue using TA366060 (CFAP47 Antibody) at dilution 1/150 (Original magnification: $\times 200$)



Immunohistochemistry of paraffin-embedded Human liver cancer tissue using TA366060 (CFAP47 Antibody) at dilution 1/150, treated with fusion protein. (Original magnification: $\times 200$)