

Product datasheet for **TA366059**

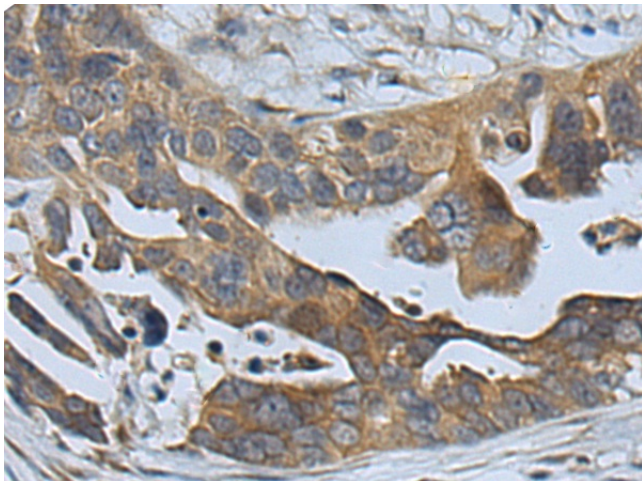
EXT1 Rabbit Polyclonal Antibody

Product data:

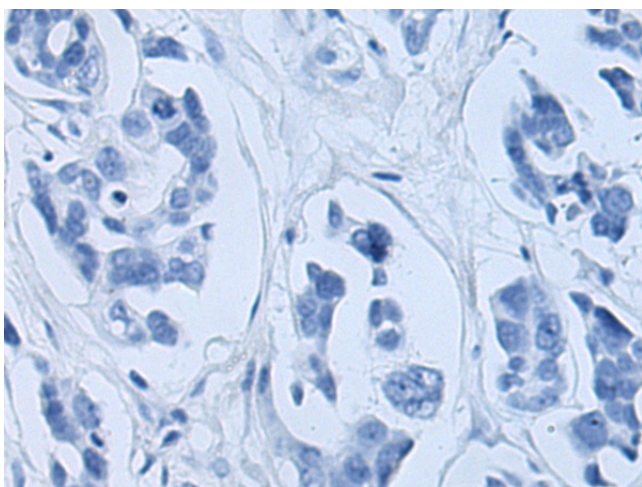
Product Type:	Primary Antibodies
Applications:	IHC
Recommended Dilution:	IHC: 100-200 Positive control: Human colorectal cancer Predicted cell location: Cytoplasm and Cell membrane
Reactivity:	Human, Mouse
Host:	Rabbit
Isotype:	IgG
Clonality:	Polyclonal
Immunogen:	Fusion protein of human EXT1
Formulation:	pH7.4 PBS, 0.05% NaN ₃ , 40% Glycerol
Concentration:	lot specific
Purification:	Antigen affinity purification
Conjugation:	Unconjugated
Storage:	Store at -20°C.
Stability:	1 year
Gene Name:	exostosin glycosyltransferase 1
Database Link:	Entrez Gene 2131 Human Q16394
Background:	This gene encodes an endoplasmic reticulum-resident type II transmembrane glycosyltransferase involved in the chain elongation step of heparan sulfate biosynthesis. Mutations in this gene cause the type I form of multiple exostoses.
Synonyms:	EXT; Glucuronosyl-N-acetylglucosaminyl-proteoglycan/N-a; LGCR; LGS; TRPS2; ttv



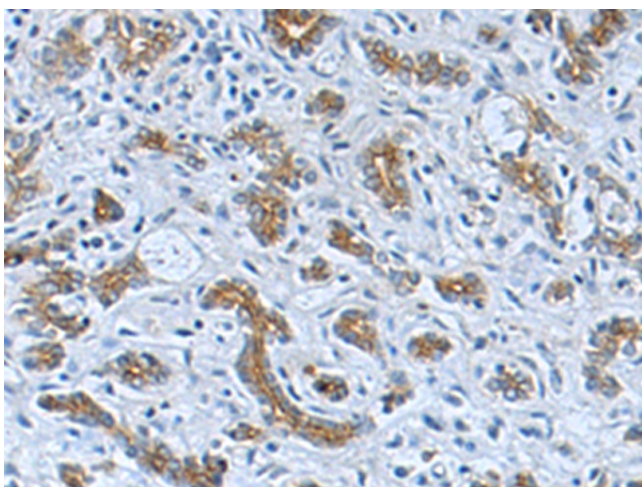
[View online »](#)

Product images:

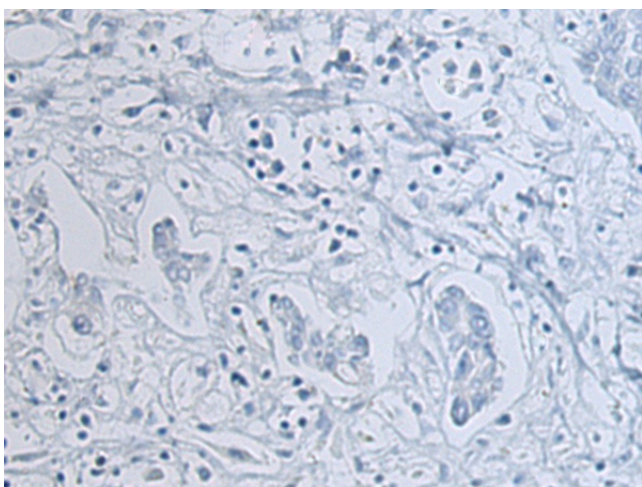
Immunohistochemistry of paraffin-embedded Human colorectal cancer tissue using TA366059 (EXT1 Antibody) at dilution 1/110 (Original magnification: $\times 200$)



Immunohistochemistry of paraffin-embedded Human colorectal cancer tissue using TA366059 (EXT1 Antibody) at dilution 1/110, treated with fusion protein. (Original magnification: $\times 200$)



Immunohistochemistry of paraffin-embedded Human liver cancer tissue using TA366059 (EXT1 Antibody) at dilution 1/110 (Original magnification: $\times 200$)



Immunohistochemistry of paraffin-embedded Human liver cancer tissue using TA366059 (EXT1 Antibody) at dilution 1/110, treated with fusion protein. (Original magnification: $\times 200$)