

## Product datasheet for **TA366058S**

### TTC12 Rabbit Polyclonal Antibody

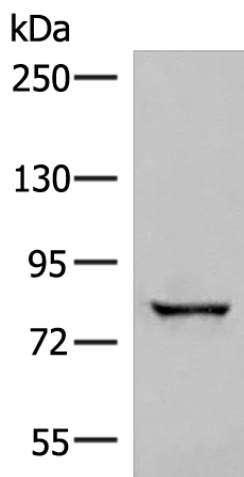
#### Product data:

Product Type:	Primary Antibodies
Applications:	IHC, WB
Recommended Dilution:	WB: 500-2000 WB positive control: Human bladder transitional cell carcinoma grade 2-3 tissue lysate IHC: 30-150 Positive control: Human cervical cancer Predicted cell location: Cytoplasm
Reactivity:	Human
Host:	Rabbit
Isotype:	IgG
Clonality:	Polyclonal
Immunogen:	Fusion protein of human TTC12
Formulation:	pH7.4 PBS, 0.05% NaN <sub>3</sub> , 40% Glycerol
Purification:	Antigen affinity purification
Conjugation:	Unconjugated
Storage:	Store at -20°C.
Stability:	1 year
Predicted Protein Size:	79 kDa
Gene Name:	tetratricopeptide repeat domain 12
Database Link:	<a href="#">Entrez Gene 54970 Human Q9H892</a>
Background:	TTC12 (tetratricopeptide repeat domain 12), also known as TPARM, is a 705 amino acid cytoplasmic protein containing a TPR repeat domain and three armadillo repeat motifs. TTC12 is expressed in testis, prostate, lung, germinal center B cells, neuroblastoma, teratocarcinoma, colon cancer and gastric cancer. The gene encoding TTC12 is located in a region of human chromosome 11 that is commonly deleted in a variety of cancers, therefore, it is considered a candidate tumor suppressor gene. Human chromosome 11 houses over 1,400 genes and comprises nearly 4% of the human genome.

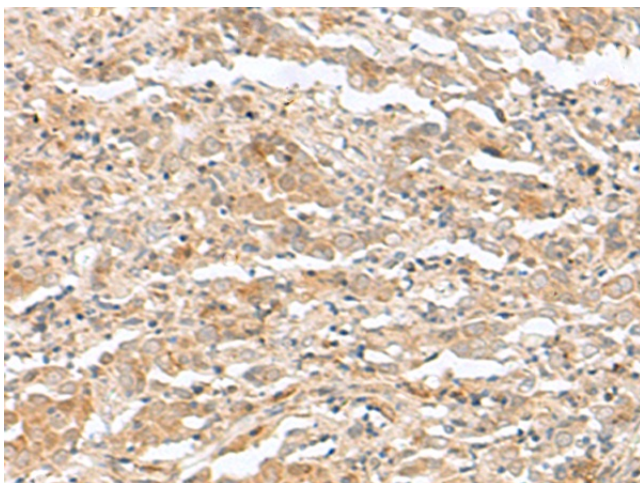
[View online »](#)

**Synonyms:** FLJ13859; FLJ20535; TPARM

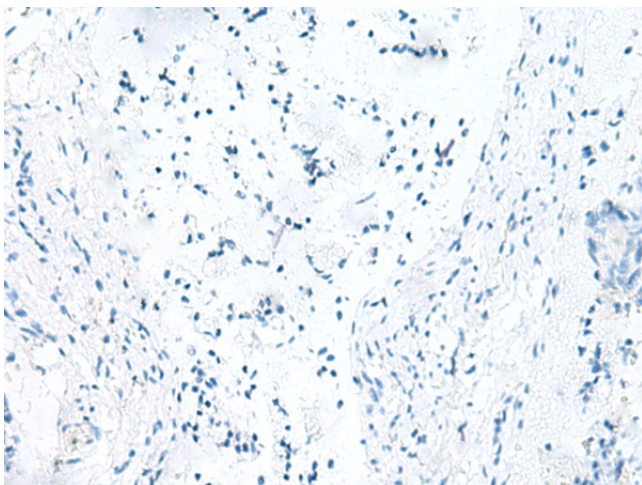
**Product images:**



Gel: 6%SDS-PAGE  
 Lysate: 40 µg  
 Lane: Human bladder transitional cell carcinoma grade 2-3 tissue lysate  
 Primary antibody: [TA366058] (TTC12 Antibody) at dilution 1/300  
 Secondary antibody: Goat anti rabbit IgG at 1/8000 dilution  
 Exposure time: 10 seconds



Immunohistochemistry of paraffin-embedded Human cervical cancer tissue using [TA366058] (TTC12 Antibody) at dilution 1/40 (Original magnification: ×200)



Immunohistochemistry of paraffin-embedded Human cervical cancer tissue using [TA366058] (TTC12 Antibody) at dilution 1/40, treated with fusion protein. (Original magnification: ×200)