

## Product datasheet for **TA366057S**

### MCCC1 Rabbit Polyclonal Antibody

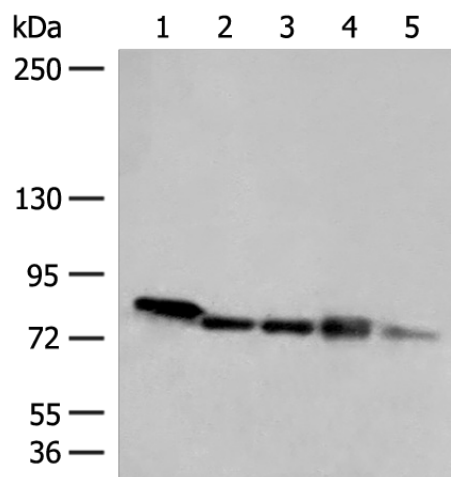
#### Product data:

Product Type:	Primary Antibodies
Applications:	IHC, WB
Recommended Dilution:	WB: 500-2000 WB positive control: 293T, HepG2, A172 cell, Mouse heart tissue, Jurkat cell lysates IHC: 40-200 Positive control: Human cervical cancer Predicted cell location: Cytoplasm
Reactivity:	Human, Mouse
Host:	Rabbit
Isotype:	IgG
Clonality:	Polyclonal
Immunogen:	Fusion protein of human MCCC1
Formulation:	pH7.4 PBS, 0.05% NaN <sub>3</sub> , 40% Glycerol
Purification:	Antigen affinity purification
Conjugation:	Unconjugated
Storage:	Store at -20°C.
Stability:	1 year
Predicted Protein Size:	80 kDa
Gene Name:	methylcrotonoyl-CoA carboxylase 1
Database Link:	<a href="#">Entrez Gene 56922 Human Q96RQ3</a>
Background:	This gene encodes the large subunit of 3-methylcrotonyl-CoA carboxylase. This enzyme functions as a heterodimer and catalyzes the carboxylation of 3-methylcrotonyl-CoA to form 3-methylglutaconyl-CoA. Mutations in this gene are associated with 3-Methylcrotonylglycinuria, an autosomal recessive disorder of leucine catabolism.
Synonyms:	DKFZp686B20267; FLJ25545; MCC-B; MCCA

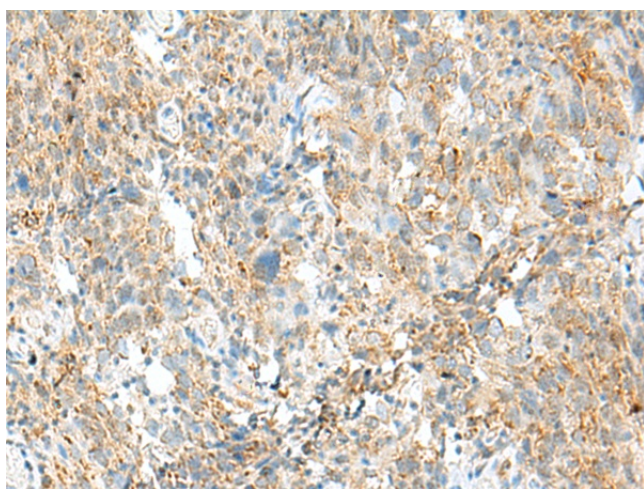


[View online »](#)

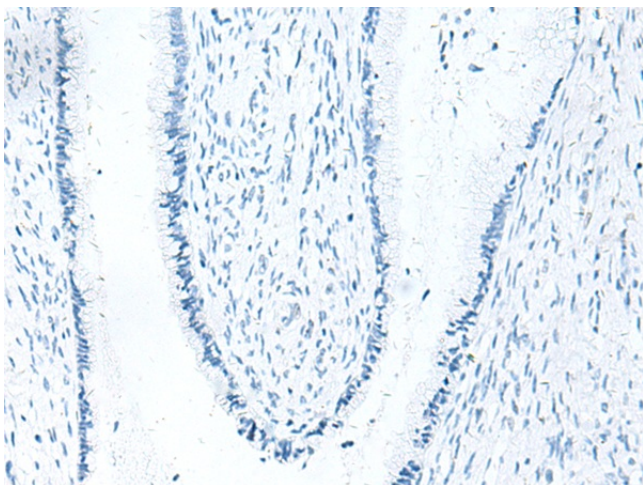
## Product images:



Gel: 6%SDS-PAGE  
Lysate: 40  $\mu$ g  
Lane 1-5: 293T  
HepG2  
A172 cell  
Mouse heart tissue  
Jurkat cell lysates  
Primary antibody: [TA366057] (MCCC1 Antibody)  
at dilution 1/300  
Secondary antibody: Goat anti rabbit IgG at  
1/8000 dilution  
Exposure time: 5 seconds



Immunohistochemistry of paraffin-embedded  
Human cervical cancer tissue using [TA366057]  
(MCCC1 Antibody) at dilution 1/45 (Original  
magnification:  $\times$ 200)



Immunohistochemistry of paraffin-embedded Human cervical cancer tissue using [TA366057] (MCCC1 Antibody) at dilution 1/45, treated with fusion protein. (Original magnification:  $\times 200$ )