

Product datasheet for **TA366057**

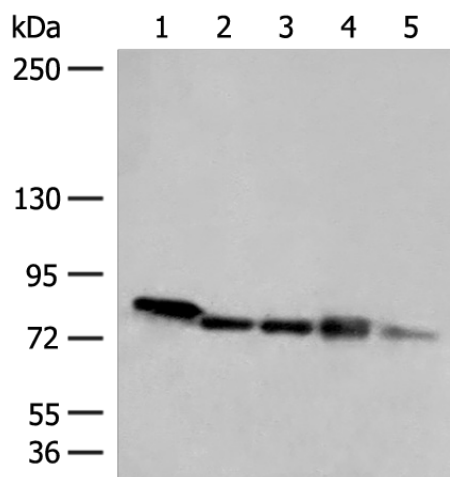
MCCC1 Rabbit Polyclonal Antibody

Product data:

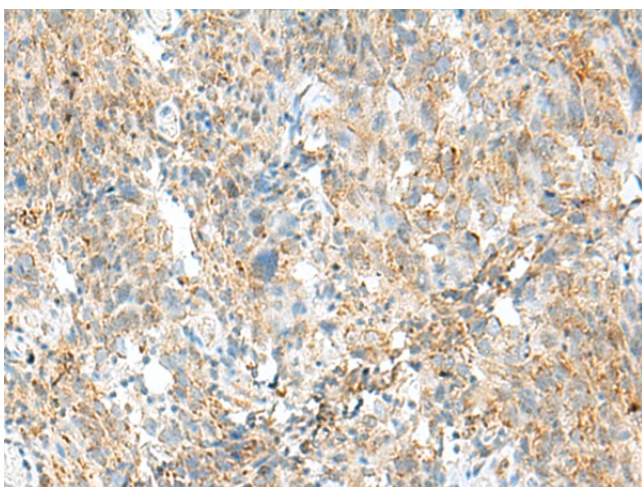
Product Type:	Primary Antibodies
Applications:	IHC, WB
Recommended Dilution:	WB: 500-2000 WB positive control: 293T, HepG2, A172 cell, Mouse heart tissue, Jurkat cell lysates IHC: 40-200 Positive control: Human cervical cancer Predicted cell location: Cytoplasm
Reactivity:	Human, Mouse
Host:	Rabbit
Isotype:	IgG
Clonality:	Polyclonal
Immunogen:	Fusion protein of human MCCC1
Formulation:	pH7.4 PBS, 0.05% NaN ₃ , 40% Glycerol
Concentration:	lot specific
Purification:	Antigen affinity purification
Conjugation:	Unconjugated
Storage:	Store at -20°C.
Stability:	1 year
Predicted Protein Size:	80 kDa
Gene Name:	methylcrotonoyl-CoA carboxylase 1
Database Link:	Entrez Gene 56922 Human Q96RQ3
Background:	This gene encodes the large subunit of 3-methylcrotonyl-CoA carboxylase. This enzyme functions as a heterodimer and catalyzes the carboxylation of 3-methylcrotonyl-CoA to form 3-methylglutaconyl-CoA. Mutations in this gene are associated with 3-Methylcrotonylglycinuria, an autosomal recessive disorder of leucine catabolism.
Synonyms:	DKFZp686B20267; FLJ25545; MCC-B; MCCA



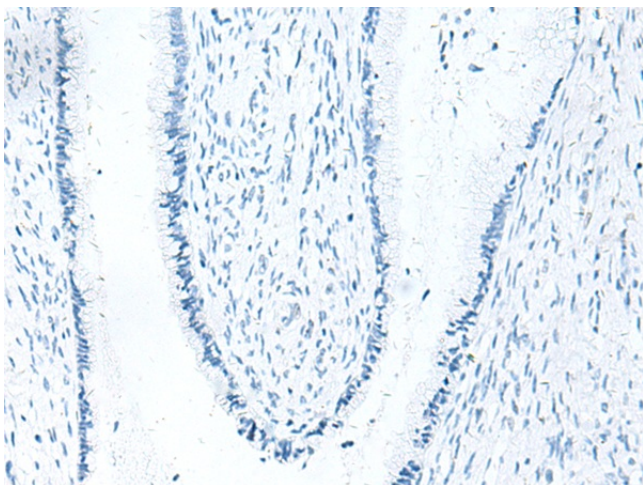
[View online »](#)

Product images:

Gel: 6%SDS-PAGE
Lysate: 40 μ g
Lane 1-5: 293T
HepG2
A172 cell
Mouse heart tissue
Jurkat cell lysates
Primary antibody: TA366057 (MCCC1 Antibody) at dilution 1/300
Secondary antibody: Goat anti rabbit IgG at 1/8000 dilution
Exposure time: 5 seconds



Immunohistochemistry of paraffin-embedded Human cervical cancer tissue using TA366057 (MCCC1 Antibody) at dilution 1/45 (Original magnification: \times 200)



Immunohistochemistry of paraffin-embedded Human cervical cancer tissue using TA366057 (MCCC1 Antibody) at dilution 1/45, treated with fusion protein. (Original magnification: ×200)