

Product datasheet for **TA366047S**

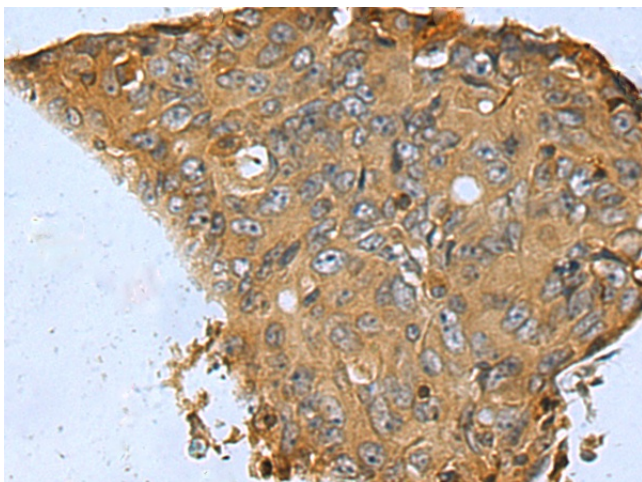
GGA2 Rabbit Polyclonal Antibody

Product data:

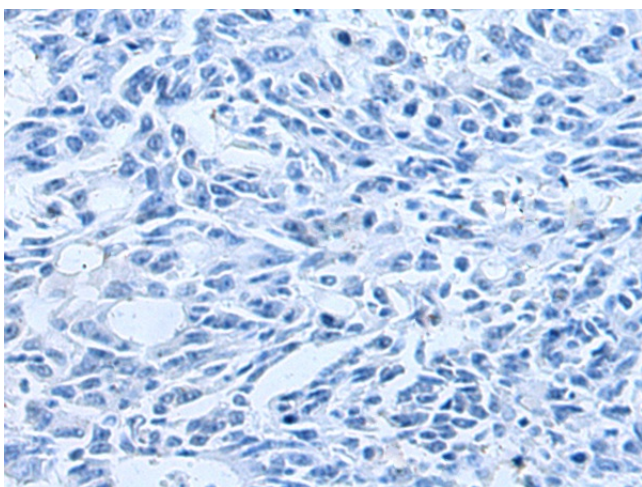
Product Type:	Primary Antibodies
Applications:	IHC
Recommended Dilution:	IHC: 150-300 Positive control: Human colorectal cancer Predicted cell location: Cytoplasm
Reactivity:	Human, Mouse
Host:	Rabbit
Isotype:	IgG
Clonality:	Polyclonal
Immunogen:	Fusion protein of human GGA2
Formulation:	pH7.4 PBS, 0.05% NaN ₃ , 40% Glycerol
Purification:	Antigen affinity purification
Conjugation:	Unconjugated
Storage:	Store at -20°C.
Stability:	1 year
Gene Name:	golgi associated, gamma adaptin ear containing, ARF binding protein 2
Database Link:	Entrez Gene 23062 Human Q9UJY4
Background:	This gene encodes a member of the Golgi-localized, gamma adaptin ear-containing, ARF-binding (GGA) family. This family includes ubiquitous coat proteins that regulate the trafficking of proteins between the trans-Golgi network and the lysosome. These proteins share an amino-terminal VHS domain which mediates sorting of the mannose 6-phosphate receptors at the trans-Golgi network. They also contain a carboxy-terminal region with homology to the ear domain of gamma-adaptins. This family member may play a significant role in cargo molecules regulation and clathrin-coated vesicle assembly.
Synonyms:	FLJ20966; KIAA1080; VEAR



[View online »](#)

Product images:

Immunohistochemistry of paraffin-embedded Human colorectal cancer tissue using [TA366047] (GGA2 Antibody) at dilution 1/150 (Original magnification: $\times 200$)



Immunohistochemistry of paraffin-embedded Human colorectal cancer tissue using [TA366047] (GGA2 Antibody) at dilution 1/150, treated with fusion protein. (Original magnification: $\times 200$)