

Product datasheet for **TA366045S**

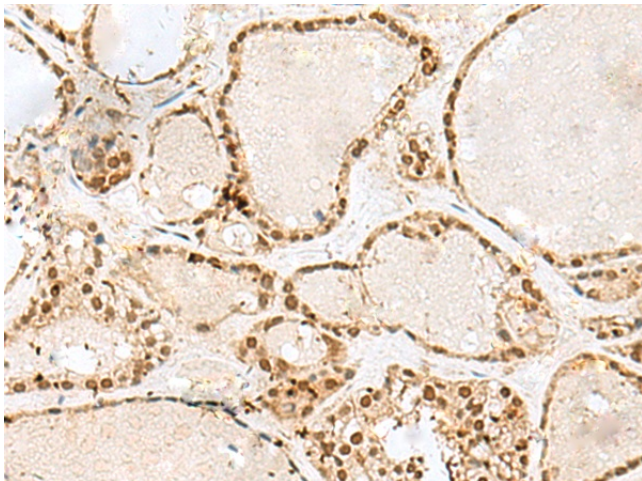
GTF3C2 Rabbit Polyclonal Antibody

Product data:

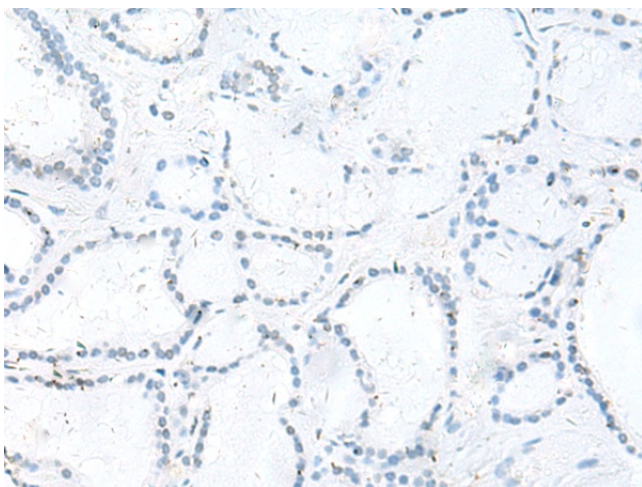
| | |
|-----------------------|--|
| Product Type: | Primary Antibodies |
| Applications: | IHC |
| Recommended Dilution: | IHC: 40-200 Positive control: Human thyroid cancer Predicted cell location: Nucleus |
| Reactivity: | Human, Mouse |
| Host: | Rabbit |
| Isotype: | IgG |
| Clonality: | Polyclonal |
| Immunogen: | Fusion protein of human GTF3C2 |
| Formulation: | pH7.4 PBS, 0.05% NaN ₃ , 40% Glycerol |
| Purification: | Antigen affinity purification |
| Conjugation: | Unconjugated |
| Storage: | Store at -20°C. |
| Stability: | 1 year |
| Gene Name: | general transcription factor IIIc subunit 2 |
| Database Link: | Entrez Gene 2976 Human Q8WUA4 |
| Background: | Required for RNA polymerase III-mediated transcription. Component of TFIIC that initiates transcription complex assembly on tRNA and is required for transcription of 5S rRNA and other stable nuclear and cytoplasmic RNAs. May play a direct role in stabilizing interactions of TFIIC2 with TFIIC1. |
| Synonyms: | KIAA0011; OTTHUMP00000123422; TF3C-beta; TFIIC-BETA; TFIIC110 |



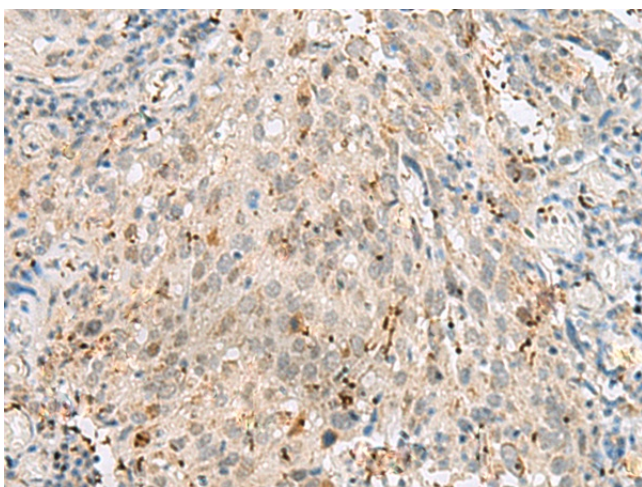
[View online »](#)

Product images:

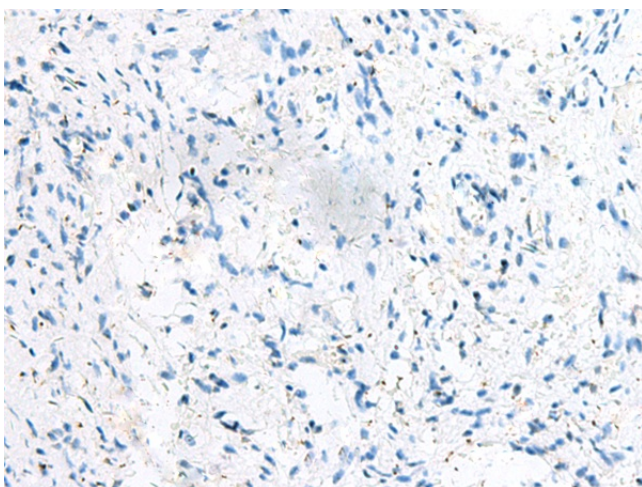
Immunohistochemistry of paraffin-embedded Human thyroid cancer tissue using [TA366045] (GTF3C2 Antibody) at dilution 1/45 (Original magnification: $\times 200$)



Immunohistochemistry of paraffin-embedded Human thyroid cancer tissue using [TA366045] (GTF3C2 Antibody) at dilution 1/45, treated with fusion protein. (Original magnification: $\times 200$)



Immunohistochemistry of paraffin-embedded Human cervical cancer tissue using [TA366045] (GTF3C2 Antibody) at dilution 1/45 (Original magnification: ×200)



Immunohistochemistry of paraffin-embedded Human cervical cancer tissue using [TA366045] (GTF3C2 Antibody) at dilution 1/45, treated with fusion protein. (Original magnification: ×200)