

## Product datasheet for **TA366045**

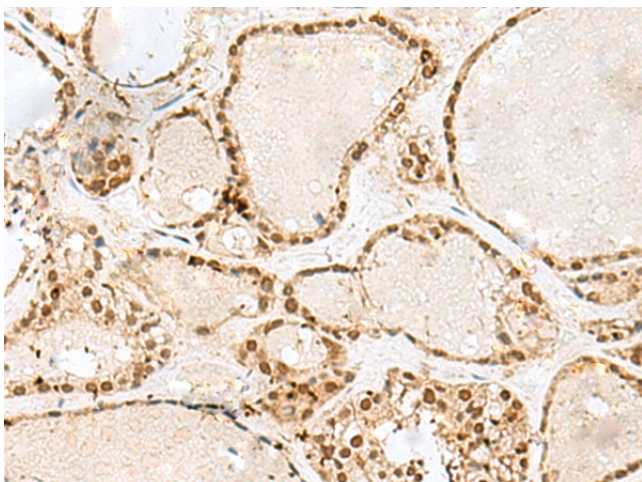
### GTF3C2 Rabbit Polyclonal Antibody

#### Product data:

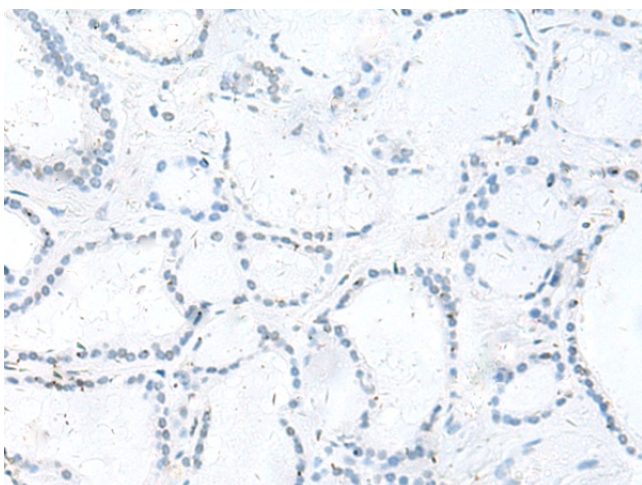
Product Type:	Primary Antibodies
Applications:	IHC
Recommended Dilution:	IHC: 40-200 Positive control: Human thyroid cancer Predicted cell location: Nucleus
Reactivity:	Human, Mouse
Host:	Rabbit
Isotype:	IgG
Clonality:	Polyclonal
Immunogen:	Fusion protein of human GTF3C2
Formulation:	pH7.4 PBS, 0.05% NaN <sub>3</sub> , 40% Glycerol
Concentration:	lot specific
Purification:	Antigen affinity purification
Conjugation:	Unconjugated
Storage:	Store at -20°C.
Stability:	1 year
Gene Name:	general transcription factor IIIC subunit 2
Database Link:	<a href="#">Entrez Gene 2976 Human Q8WUA4</a>
Background:	Required for RNA polymerase III-mediated transcription. Component of TFIIC that initiates transcription complex assembly on tRNA and is required for transcription of 5S rRNA and other stable nuclear and cytoplasmic RNAs. May play a direct role in stabilizing interactions of TFIIC2 with TFIIC1.
Synonyms:	KIAA0011; OTTHUMP00000123422; TF3C-beta; TFIIC-BETA; TFIIC110



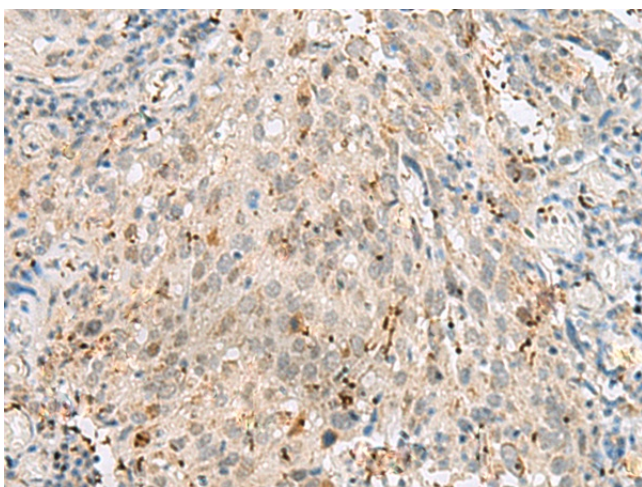
[View online »](#)

**Product images:**

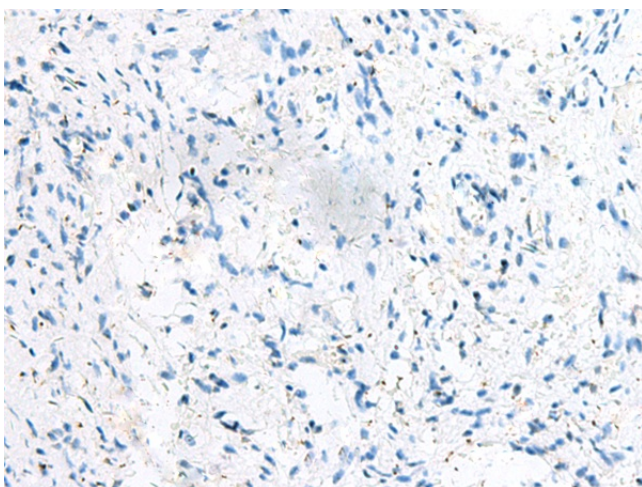
Immunohistochemistry of paraffin-embedded Human thyroid cancer tissue using TA366045 (GTF3C2 Antibody) at dilution 1/45 (Original magnification:  $\times 200$ )



Immunohistochemistry of paraffin-embedded Human thyroid cancer tissue using TA366045 (GTF3C2 Antibody) at dilution 1/45, treated with fusion protein. (Original magnification:  $\times 200$ )



Immunohistochemistry of paraffin-embedded Human cervical cancer tissue using TA366045 (GTF3C2 Antibody) at dilution 1/45 (Original magnification: ×200)



Immunohistochemistry of paraffin-embedded Human cervical cancer tissue using TA366045 (GTF3C2 Antibody) at dilution 1/45, treated with fusion protein. (Original magnification: ×200)