

Product datasheet for **TA366038**

Acyltransferase like 1 (LPCAT2) Rabbit Polyclonal Antibody

Product data:

Product Type:	Primary Antibodies
Applications:	IHC, WB
Recommended Dilution:	WB: 200-1000 WB positive control: Mouse thymus tissue lysate IHC: 100-200 Positive control: Human colorectal cancer Predicted cell location: Cytoplasm
Reactivity:	Human, Mouse, Rat
Host:	Rabbit
Isotype:	IgG
Clonality:	Polyclonal
Immunogen:	Fusion protein of human LPCAT2
Formulation:	pH7.4 PBS, 0.05% NaN ₃ , 40% Glycerol
Concentration:	lot specific
Purification:	Antigen affinity purification
Conjugation:	Unconjugated
Storage:	Store at -20°C.
Stability:	1 year
Predicted Protein Size:	60 kDa
Gene Name:	lysophosphatidylcholine acyltransferase 2
Database Link:	Entrez Gene 54947 Human Q7L5N7



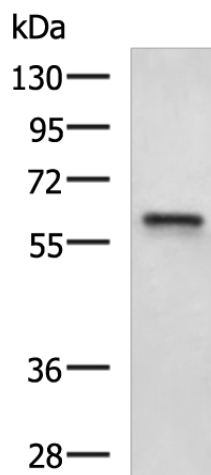
[View online »](#)

Background:

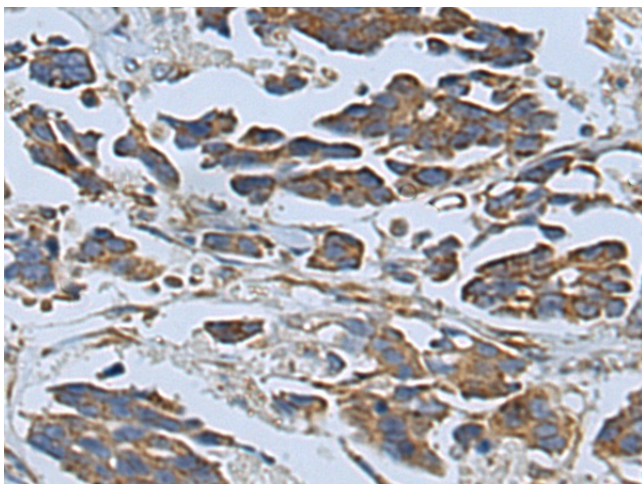
This gene encodes a member of the lysophospholipid acyltransferase family. The encoded enzyme may function in two ways: to catalyze the biosynthesis of platelet-activating factor (1-O-alkyl-2-acetyl-sn-glycero-3-phosphocholine) from 1-O-alkyl-sn-glycero-3-phosphocholine, and to catalyze the synthesis of glycerophospholipid precursors from arachidonyl-CoA and lysophosphatidylcholine. The encoded protein may function in membrane biogenesis and production of platelet-activating factor in inflammatory cells. The enzyme may localize to the endoplasmic reticulum and the Golgi.

Synonyms:

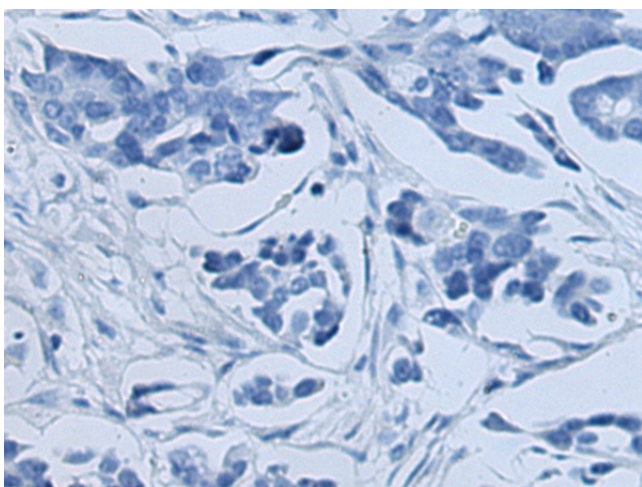
AYTL1; DKFZp686H22112; FLJ20481; LPCAT-2; LysoPAFAT

Product images:

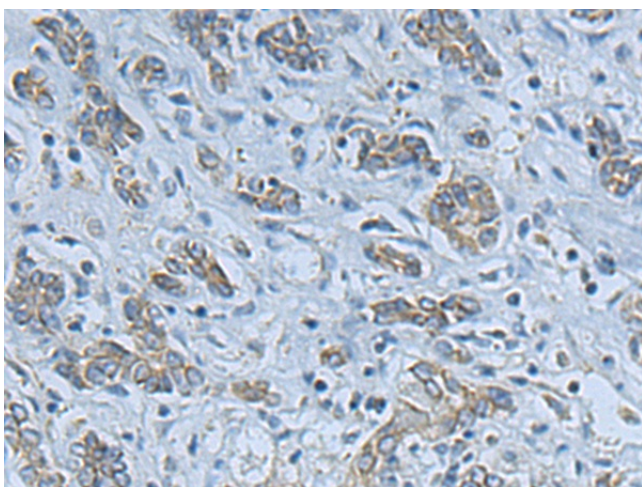
Gel: 8%SDS-PAGE
Lysate: 40 µg
Lane: Mouse thymus tissue lysate
Primary antibody: TA366038 (LPCAT2 Antibody) at dilution 1/400
Secondary antibody: Goat anti rabbit IgG at 1/5000 dilution
Exposure time: 20 seconds



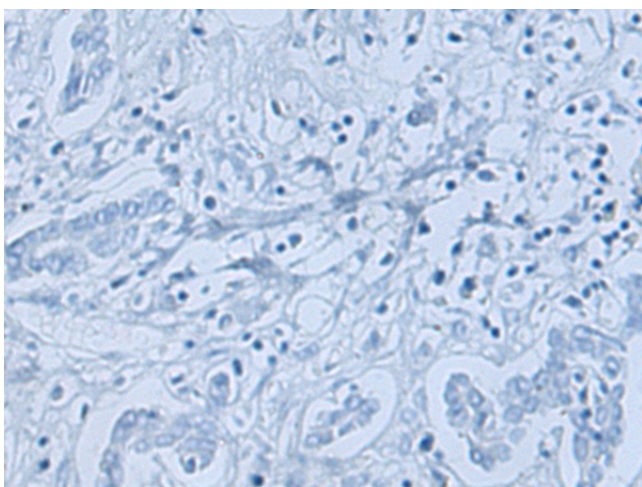
Immunohistochemistry of paraffin-embedded Human colorectal cancer tissue using TA366038 (LPCAT2 Antibody) at dilution 1/120 (Original magnification: ×200)



Immunohistochemistry of paraffin-embedded Human colorectal cancer tissue using TA366038 (LPCAT2 Antibody) at dilution 1/120, treated with fusion protein. (Original magnification: ×200)



Immunohistochemistry of paraffin-embedded Human liver cancer tissue using TA366038 (LPCAT2 Antibody) at dilution 1/120 (Original magnification: ×200)



Immunohistochemistry of paraffin-embedded Human liver cancer tissue using TA366038 (LPCAT2 Antibody) at dilution 1/120, treated with fusion protein. (Original magnification: ×200)