

## Product datasheet for **TA366037S**

### **MADM (NRBP1) Rabbit Polyclonal Antibody**

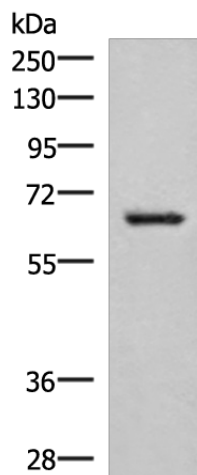
#### **Product data:**

<b>Product Type:</b>	Primary Antibodies
<b>Applications:</b>	IHC, WB
<b>Recommended Dilution:</b>	WB: 200-1000 WB positive control: Human placenta tissue lysate IHC: 50-300 Positive control: Human cervical cancer Predicted cell location: Cytoplasm
<b>Reactivity:</b>	Human, Mouse
<b>Host:</b>	Rabbit
<b>Isotype:</b>	IgG
<b>Clonality:</b>	Polyclonal
<b>Immunogen:</b>	Fusion protein of human NRBP1
<b>Formulation:</b>	pH7.4 PBS, 0.05% NaN <sub>3</sub> , 40% Glycerol
<b>Purification:</b>	Antigen affinity purification
<b>Conjugation:</b>	Unconjugated
<b>Storage:</b>	Store at -20°C.
<b>Stability:</b>	1 year
<b>Predicted Protein Size:</b>	60 kDa
<b>Gene Name:</b>	nuclear receptor binding protein 1
<b>Database Link:</b>	<a href="#">Entrez Gene 29959 Human Q9UHY1</a>
<b>Background:</b>	May play a role in subcellular trafficking between the endoplasmic reticulum and Golgi apparatus through interactions with the Rho-type GTPases. Binding to the NS3 protein of dengue virus type 2 appears to subvert this activity into the alteration of the intracellular membrane structure associated with flaviviral replication.
<b>Synonyms:</b>	BCON3; FLJ27109; FLJ35541; MADM; MUDPNP; NRBP; OTTHUMP00000123427

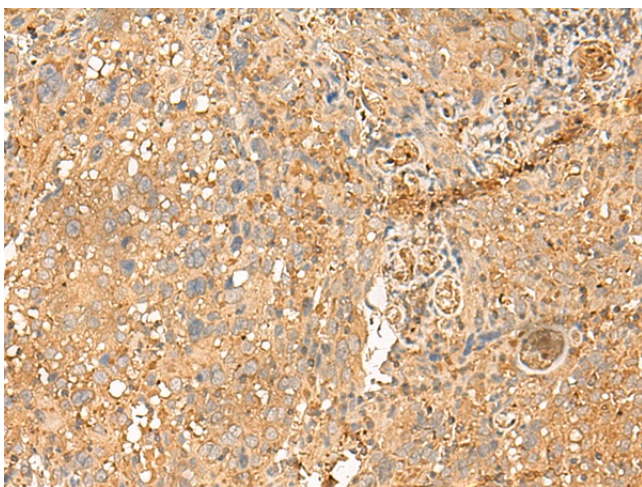


[View online »](#)

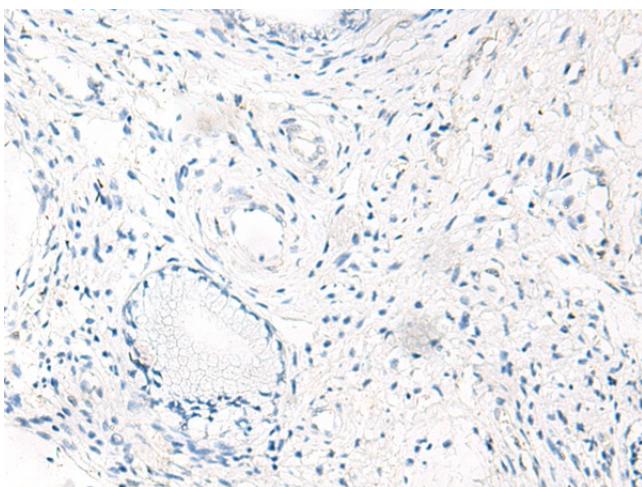
## Product images:



Gel: 8%SDS-PAGE  
Lysate: 40  $\mu$ g  
Lane: Human placenta tissue lysate  
Primary antibody: [TA366037] (NRBP1 Antibody) at dilution 1/250  
Secondary antibody: Goat anti rabbit IgG at 1/8000 dilution  
Exposure time: 5 seconds



Immunohistochemistry of paraffin-embedded Human cervical cancer tissue using [TA366037] (NRBP1 Antibody) at dilution 1/40 (Original magnification:  $\times$ 200)



Immunohistochemistry of paraffin-embedded Human cervical cancer tissue using [TA366037] (NRBP1 Antibody) at dilution 1/40, treated with fusion protein. (Original magnification: ×200)