

Product datasheet for **TA366033S**

EXD2 Rabbit Polyclonal Antibody

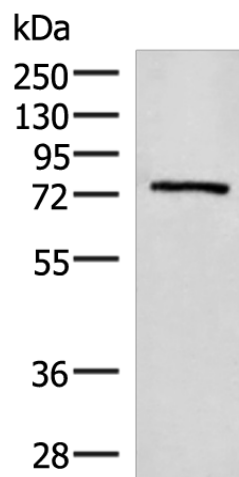
Product data:

Product Type:	Primary Antibodies
Applications:	IHC, WB
Recommended Dilution:	WB: 200-1000 WB positive control: Mouse testis tissue lysate IHC: 40-200 Positive control: Human ovarian cancer Predicted cell location: Nucleus
Reactivity:	Human, Mouse
Host:	Rabbit
Isotype:	IgG
Clonality:	Polyclonal
Immunogen:	Fusion protein of human EXD2
Formulation:	pH7.4 PBS, 0.05% NaN ₃ , 40% Glycerol
Purification:	Antigen affinity purification
Conjugation:	Unconjugated
Storage:	Store at -20°C.
Stability:	1 year
Predicted Protein Size:	70 kDa
Gene Name:	exonuclease 3'-5' domain containing 2
Database Link:	Entrez Gene 55218 Human Q9NVH0
Background:	Exonuclease required for double-strand breaks resection and efficient homologous recombination. Plays a key role in controlling the initial steps of chromosomal break repair, it is recruited to chromatin in a damage-dependent manner and functionally interacts with the MRN complex to accelerate resection through its 3'-5' exonuclease activity, which efficiently processes double-stranded DNA substrates containing nicks.
Synonyms:	C14orf114; DKFZp781A0133; DKFZp781L15100; EXDL2; FLJ10738; OTTHUMP00000205813; OTTHUMP00000205816; OTTHUMP00000205817; OTTHUMP00000205818

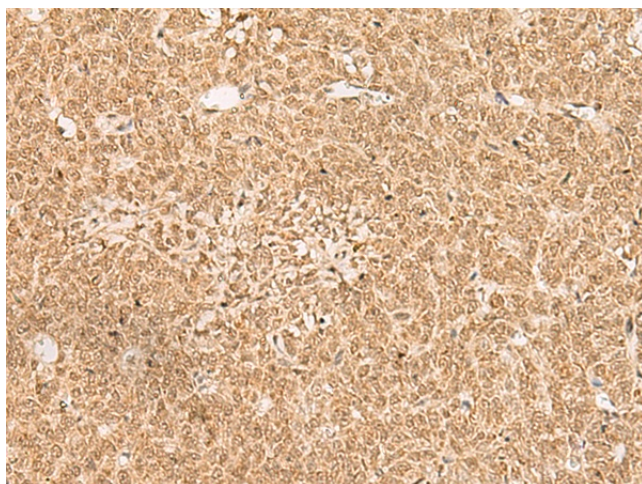


[View online »](#)

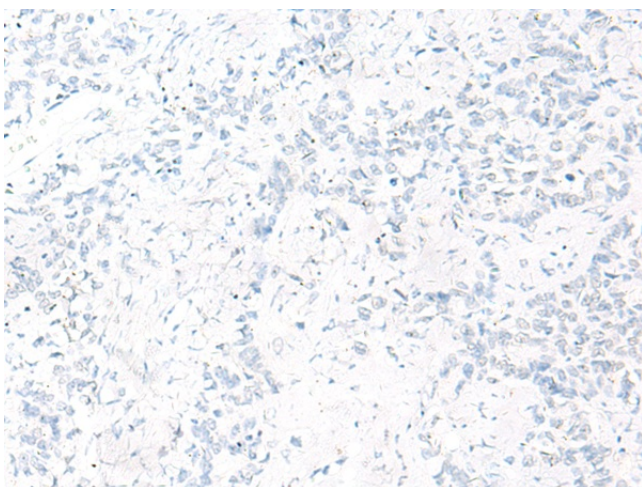
Product images:



Gel: 8%SDS-PAGE
Lysate: 40 μ g
Lane: Mouse testis tissue lysate
Primary antibody: [TA366033] (EXD2 Antibody) at dilution 1/250
Secondary antibody: Goat anti rabbit IgG at 1/8000 dilution
Exposure time: 1 minute



Immunohistochemistry of paraffin-embedded Human ovarian cancer tissue using [TA366033] (EXD2 Antibody) at dilution 1/35 (Original magnification: \times 200)



Immunohistochemistry of paraffin-embedded Human ovarian cancer tissue using [TA366033] (EXD2 Antibody) at dilution 1/35, treated with fusion protein. (Original magnification: ×200)