

## Product datasheet for **TA366033**

### EXD2 Rabbit Polyclonal Antibody

#### Product data:

Product Type:	Primary Antibodies
Applications:	IHC, WB
Recommended Dilution:	WB: 200-1000 WB positive control: Mouse testis tissue lysate IHC: 40-200 Positive control: Human ovarian cancer Predicted cell location: Nucleus
Reactivity:	Human, Mouse
Host:	Rabbit
Isotype:	IgG
Clonality:	Polyclonal
Immunogen:	Fusion protein of human EXD2
Formulation:	pH7.4 PBS, 0.05% NaN <sub>3</sub> , 40% Glycerol
Concentration:	lot specific
Purification:	Antigen affinity purification
Conjugation:	Unconjugated
Storage:	Store at -20°C.
Stability:	1 year
Predicted Protein Size:	70 kDa
Gene Name:	exonuclease 3'-5' domain containing 2
Database Link:	<a href="#">Entrez Gene 55218 Human Q9NVH0</a>

**Background:** Exonuclease required for double-strand breaks resection and efficient homologous recombination. Plays a key role in controlling the initial steps of chromosomal break repair, it is recruited to chromatin in a damage-dependent manner and functionally interacts with the MRN complex to accelerate resection through its 3'-5' exonuclease activity, which efficiently processes double-stranded DNA substrates containing nicks.

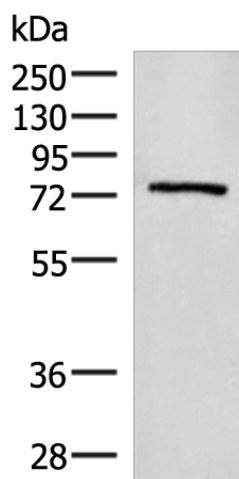


[View online »](#)

## Synonyms:

C14orf114; DKFZp781A0133; DKFZp781L15100; EXDL2; FLJ10738; OTTHUMP00000205813;  
OTTHUMP00000205816; OTTHUMP00000205817; OTTHUMP00000205818

## Product images:



Gel: 8%SDS-PAGE

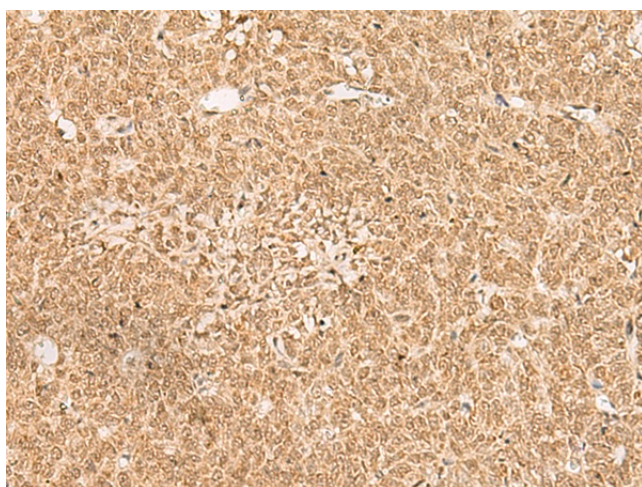
Lysate: 40  $\mu$ g

Lane: Mouse testis tissue lysate

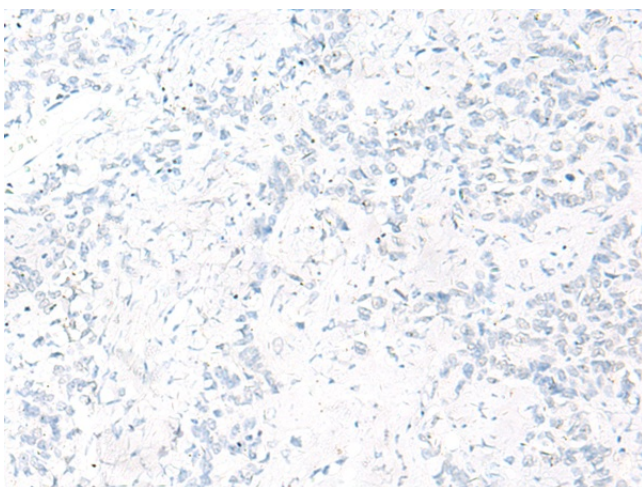
Primary antibody: TA366033 (EXD2 Antibody) at dilution 1/250

Secondary antibody: Goat anti rabbit IgG at 1/8000 dilution

Exposure time: 1 minute



Immunohistochemistry of paraffin-embedded Human ovarian cancer tissue using TA366033 (EXD2 Antibody) at dilution 1/35 (Original magnification:  $\times$ 200)



Immunohistochemistry of paraffin-embedded Human ovarian cancer tissue using TA366033 (EXD2 Antibody) at dilution 1/35, treated with fusion protein. (Original magnification: ×200)