

## Product datasheet for **TA366030**

### 26S proteasome non ATPase regulatory subunit 12 (PSMD12) Rabbit Polyclonal Antibody

#### Product data:

Product Type:	Primary Antibodies
Applications:	IHC, WB
Recommended Dilution:	WB: 1000-5000 WB positive control: Human cerebrum tissue lysate IHC: 50-300 Positive control: Human tonsil Predicted cell location: Cytoplasm and Nucleus
Reactivity:	Human, Mouse, Rat
Host:	Rabbit
Isotype:	IgG
Clonality:	Polyclonal
Immunogen:	Fusion protein of human PSMD12
Formulation:	pH7.4 PBS, 0.05% NaN <sub>3</sub> , 40% Glycerol
Concentration:	lot specific
Purification:	Antigen affinity purification
Conjugation:	Unconjugated
Storage:	Store at -20°C.
Stability:	1 year
Predicted Protein Size:	53 kDa
Gene Name:	proteasome 26S subunit, non-ATPase 12
Database Link:	<a href="#">Entrez Gene 5718 Human O00232</a>



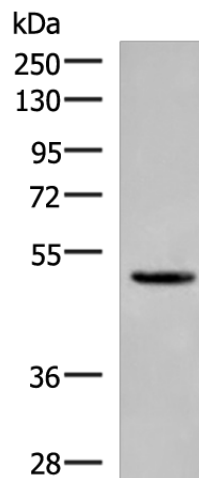
[View online »](#)

**Background:**

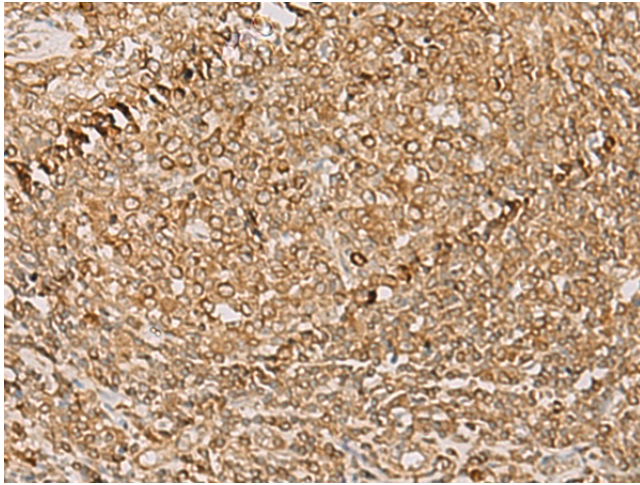
The 26S proteasome is a multicatalytic proteinase complex with a highly ordered structure composed of 2 complexes, a 20S core and a 19S regulator. The 20S core is composed of 4 rings of 28 non-identical subunits; 2 rings are composed of 7 alpha subunits and 2 rings are composed of 7 beta subunits. The 19S regulator is composed of a base, which contains 6 ATPase subunits and 2 non-ATPase subunits, and a lid, which contains up to 10 non-ATPase subunits. Proteasomes are distributed throughout eukaryotic cells at a high concentration and cleave peptides in an ATP/ubiquitin-dependent process in a non-lysosomal pathway. An essential function of a modified proteasome, the immunoproteasome, is the processing of class I MHC peptides. This gene encodes a non-ATPase subunit of the 19S regulator. A pseudogene has been identified on chromosome 3. Alternatively spliced transcript variants encoding different isoforms have been found for this gene.

**Synonyms:**

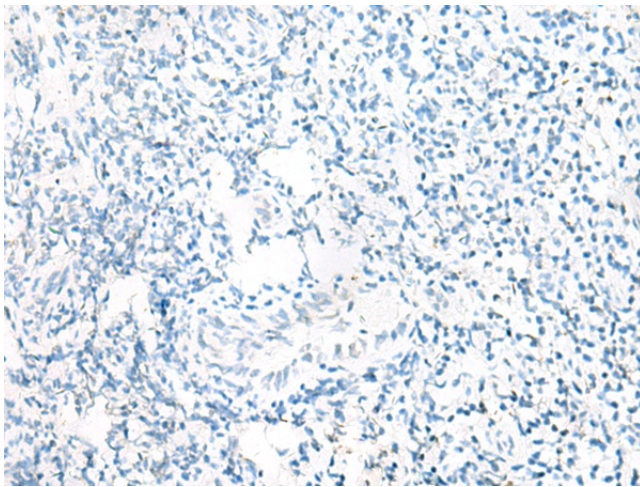
MGC75406; p55; Rpn5

**Product images:**

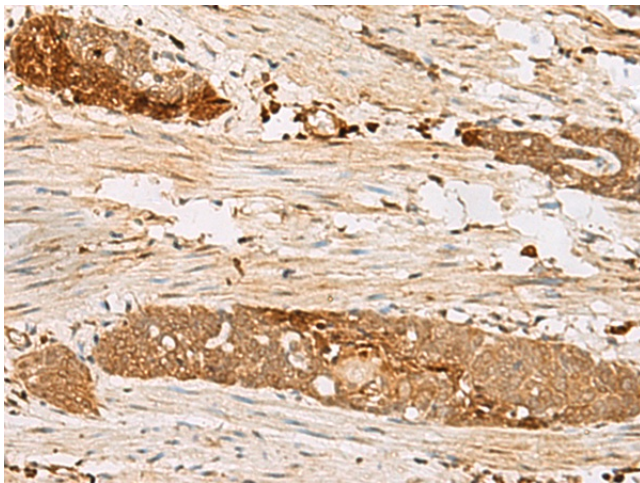
Gel: 8%SDS-PAGE  
Lysate: 40 µg  
Lane: Human cerebrum tissue lysate  
Primary antibody: TA366030 (PSMD12 Antibody)  
at dilution 1/900  
Secondary antibody: Goat anti rabbit IgG at  
1/5000 dilution  
Exposure time: 1 second



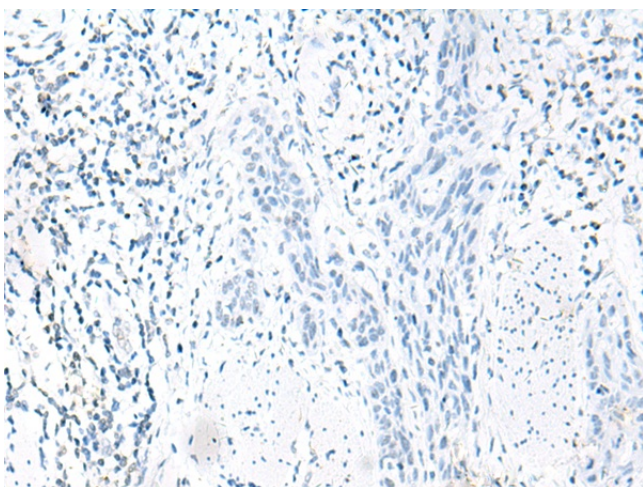
Immunohistochemistry of paraffin-embedded Human tonsil tissue using TA366030 (PSMD12 Antibody) at dilution 1/50 (Original magnification: ×200)



Immunohistochemistry of paraffin-embedded Human tonsil tissue using TA366030 (PSMD12 Antibody) at dilution 1/50, treated with fusion protein. (Original magnification: ×200)



Immunohistochemistry of paraffin-embedded Human esophagus cancer tissue using TA366030 (PSMD12 Antibody) at dilution 1/50 (Original magnification: ×200)



Immunohistochemistry of paraffin-embedded Human esophagus cancer tissue using TA366030 (PSMD12 Antibody) at dilution 1/50, treated with fusion protein. (Original magnification: ×200)