

Product datasheet for **TA366025S**

ENO3 Rabbit Polyclonal Antibody

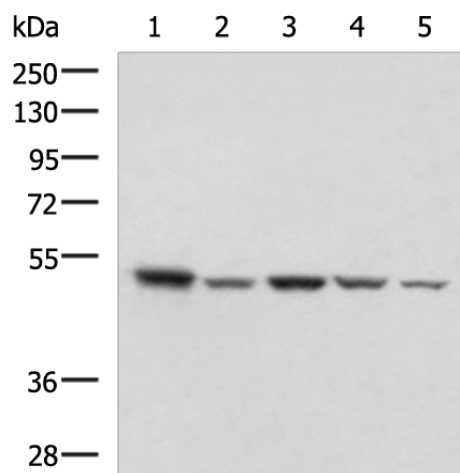
Product data:

Product Type:	Primary Antibodies
Applications:	IHC, WB
Recommended Dilution:	WB: 500-2000 WB positive control: HepG2, NIH/3T3, C2CL2, Raji and Jurkat cell lysates IHC: 50-200 Positive control: Human tonsil Predicted cell location: Cytoplasm
Reactivity:	Human, Mouse, Rat
Host:	Rabbit
Isotype:	IgG
Clonality:	Polyclonal
Immunogen:	Fusion protein of human ENO3
Formulation:	pH7.4 PBS, 0.05% NaN ₃ , 40% Glycerol
Purification:	Antigen affinity purification
Conjugation:	Unconjugated
Storage:	Store at -20°C.
Stability:	1 year
Predicted Protein Size:	47 kDa
Gene Name:	enolase 3
Database Link:	Entrez Gene 2027 Human P13929
Background:	This gene encodes one of the three enolase isoenzymes found in mammals. This isoenzyme is found in skeletal muscle cells in the adult where it may play a role in muscle development and regeneration. A switch from alpha enolase to beta enolase occurs in muscle tissue during development in rodents. Mutations in this gene have been associated with glycogen storage disease. Alternatively spliced transcript variants encoding different isoforms have been described.
Synonyms:	GSD13; MSE

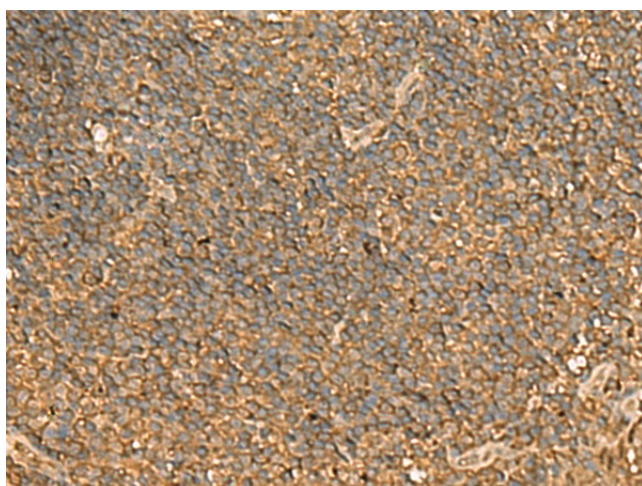


[View online »](#)

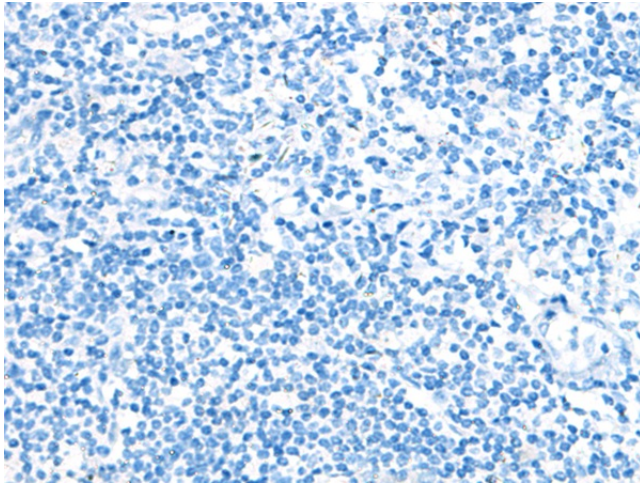
Product images:



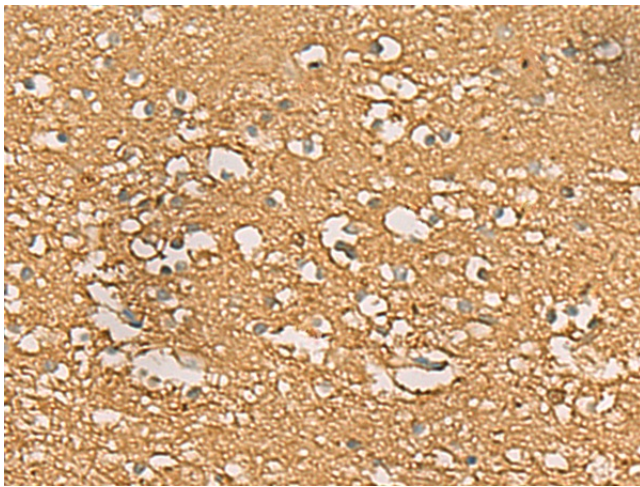
Gel: 8%SDS-PAGE
Lysate: 40 μ g
Lane 1-5: HepG2
NIH/3T3
C2CL2
Raji and Jurkat cell lysates
Primary antibody: [TA366025] (ENO3 Antibody) at
dilution 1/1000
Secondary antibody: Goat anti rabbit IgG at
1/5000 dilution
Exposure time: 10 seconds



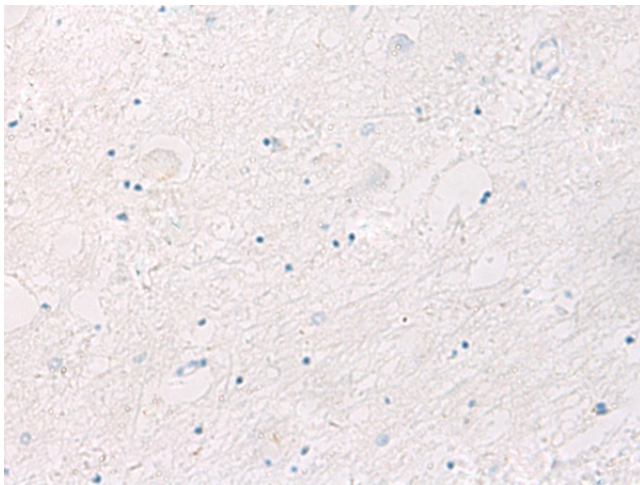
Immunohistochemistry of paraffin-embedded
Human tonsil tissue using [TA366025] (ENO3
Antibody) at dilution 1/70 (Original magnification:
 \times 200)



Immunohistochemistry of paraffin-embedded Human tonsil tissue using [TA366025] (ENO3 Antibody) at dilution 1/70, treated with fusion protein. (Original magnification: $\times 200$)



Immunohistochemistry of paraffin-embedded Human brain tissue using [TA366025] (ENO3 Antibody) at dilution 1/70 (Original magnification: $\times 200$)



Immunohistochemistry of paraffin-embedded Human brain tissue using [TA366025] (ENO3 Antibody) at dilution 1/70, treated with fusion protein. (Original magnification: $\times 200$)