

Product datasheet for **TA366023**

MRPS5 Rabbit Polyclonal Antibody

Product data:

Product Type:	Primary Antibodies
Applications:	IHC, WB
Recommended Dilution:	WB: 500-2000 WB positive control: Hela, Raji, HepG2, A549 cell lysates IHC: 50-200 Positive control: Human gastric cancer Predicted cell location: Cytoplasm
Reactivity:	Human, Mouse
Host:	Rabbit
Isotype:	IgG
Clonality:	Polyclonal
Immunogen:	Fusion protein of human MRPS5
Formulation:	pH7.4 PBS, 0.05% NaN ₃ , 40% Glycerol
Concentration:	lot specific
Purification:	Antigen affinity purification
Conjugation:	Unconjugated
Storage:	Store at -20°C.
Stability:	1 year
Predicted Protein Size:	48 kDa
Gene Name:	mitochondrial ribosomal protein S5
Database Link:	Entrez Gene 64969 Human P82675



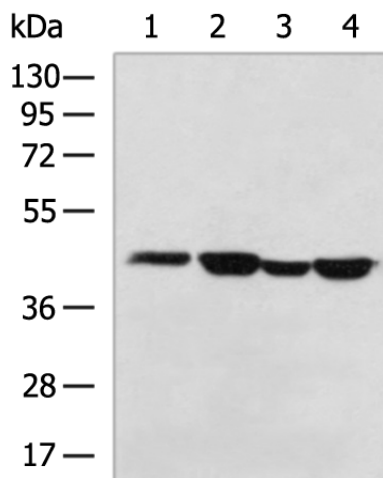
[View online »](#)

Background:

Mammalian mitochondrial ribosomal proteins are encoded by nuclear genes and help in protein synthesis within the mitochondrion. Mitochondrial ribosomes (mitoribosomes) consist of a small 28S subunit and a large 39S subunit. They have an estimated 75% protein to rRNA composition compared to prokaryotic ribosomes, where this ratio is reversed. Another difference between mammalian mitoribosomes and prokaryotic ribosomes is that the latter contain a 5S rRNA. Among different species, the proteins comprising the mitoribosome differ greatly in sequence, and sometimes in biochemical properties, which prevents easy recognition by sequence homology. This gene encodes a 28S subunit protein that belongs to the ribosomal protein S5P family. Pseudogenes corresponding to this gene are found on chromosomes 4q, 5q, and 18q.

Synonyms:

MRP-S5; S5mt

Product images:

Gel: 8%SDS-PAGE

Lysate: 40 μ g

Lane 1-4: HeLa

Raji

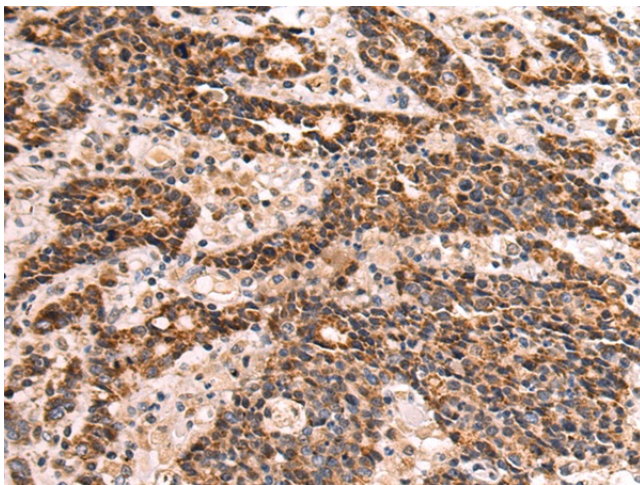
HepG2

A549 cell lysates

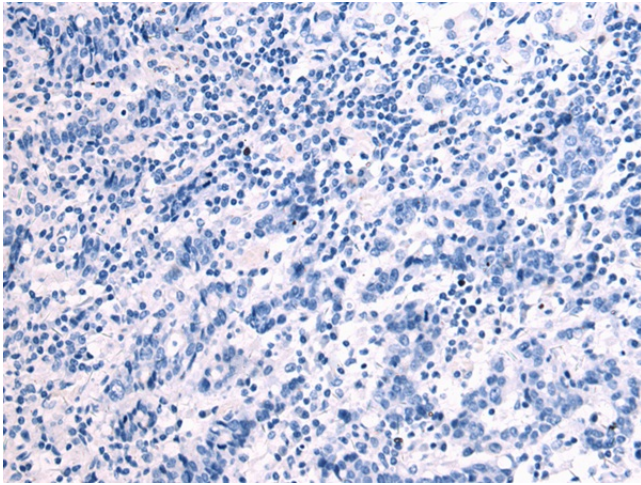
Primary antibody: TA366023 (MRPS5 Antibody) at dilution 1/600

Secondary antibody: Goat anti rabbit IgG at 1/5000 dilution

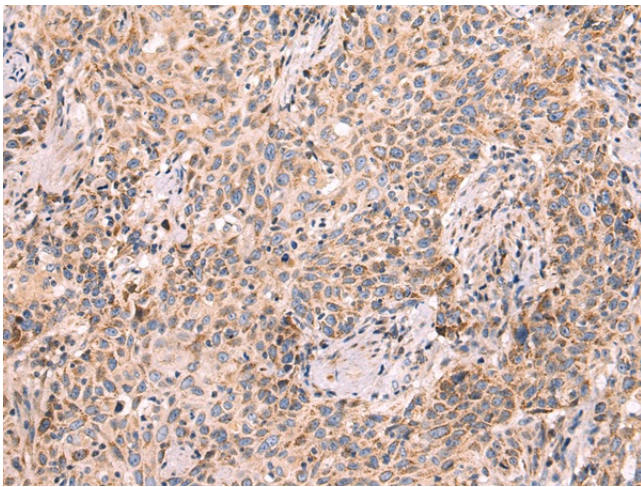
Exposure time: 1 minute



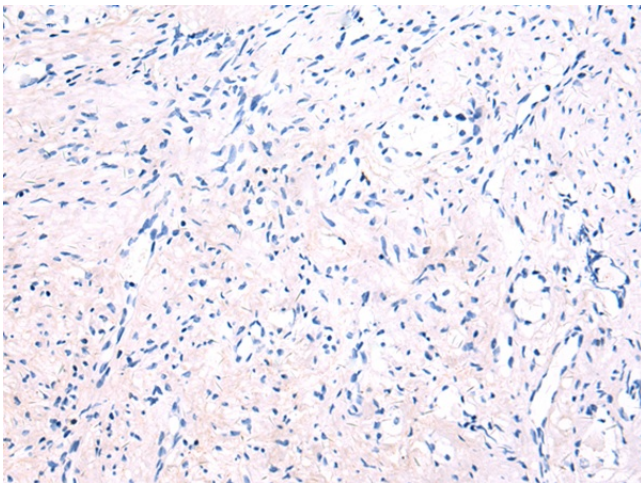
Immunohistochemistry of paraffin-embedded Human gastric cancer tissue using TA366023 (MRPS5 Antibody) at dilution 1/75 (Original magnification: \times 200)



Immunohistochemistry of paraffin-embedded Human gastric cancer tissue using TA366023 (MRPS5 Antibody) at dilution 1/75, treated with fusion protein. (Original magnification: $\times 200$)



Immunohistochemistry of paraffin-embedded Human prostate cancer tissue using TA366023 (MRPS5 Antibody) at dilution 1/75 (Original magnification: $\times 200$)



Immunohistochemistry of paraffin-embedded Human prostate cancer tissue using TA366023 (MRPS5 Antibody) at dilution 1/75, treated with fusion protein. (Original magnification: $\times 200$)