

## Product datasheet for **TA366021**

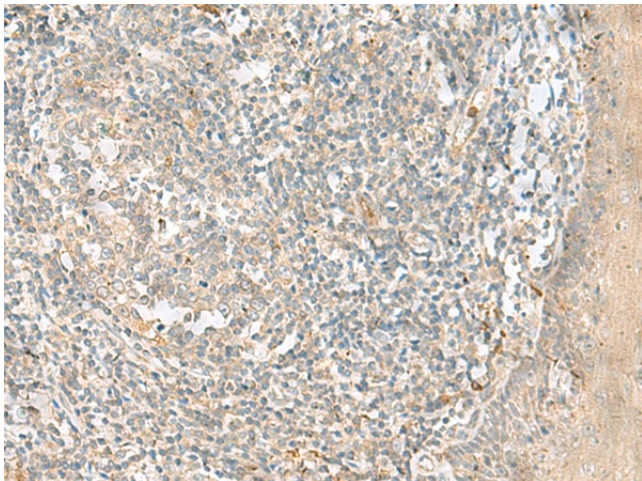
### **TLL1 Rabbit Polyclonal Antibody**

#### **Product data:**

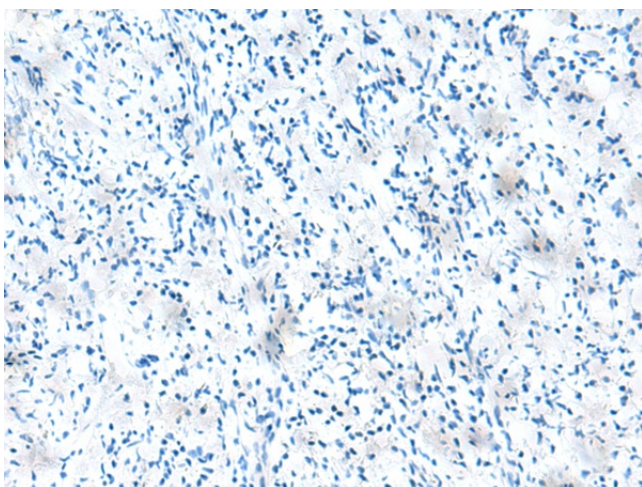
<b>Product Type:</b>	Primary Antibodies
<b>Applications:</b>	IHC
<b>Recommended Dilution:</b>	IHC: 50-300 Positive control: Human tonsil Predicted cell location: Cytoplasm
<b>Reactivity:</b>	Human, Mouse, Rat
<b>Host:</b>	Rabbit
<b>Isotype:</b>	IgG
<b>Clonality:</b>	Polyclonal
<b>Immunogen:</b>	Fusion protein of human TLL1
<b>Formulation:</b>	pH7.4 PBS, 0.05% NaN <sub>3</sub> , 40% Glycerol
<b>Concentration:</b>	lot specific
<b>Purification:</b>	Antigen affinity purification
<b>Conjugation:</b>	Unconjugated
<b>Storage:</b>	Store at -20°C.
<b>Stability:</b>	1 year
<b>Gene Name:</b>	tubulin tyrosine ligase like 1
<b>Database Link:</b>	<a href="#">Entrez Gene 25809 Human O95922</a>
<b>Background:</b>	Catalytic subunit of the neuronal tubulin polyglutamylase complex. Modifies alpha- and beta-tubulin, generating side chains of glutamate on the gamma-carboxyl groups of specific glutamate residues within the C-terminal tail of alpha- and beta-tubulin (By similarity).
<b>Synonyms:</b>	C22orf7; HS323M22B; KIAA0173; PGs3



[View online »](#)

**Product images:**

Immunohistochemistry of paraffin-embedded Human tonsil tissue using TA366021 (TTLL1 Antibody) at dilution 1/90 (Original magnification: ×200)



Immunohistochemistry of paraffin-embedded Human tonsil tissue using TA366021 (TTLL1 Antibody) at dilution 1/90, treated with fusion protein. (Original magnification: ×200)