

Product datasheet for **TA366012S**

Leupaxin (LPXN) Rabbit Polyclonal Antibody

Product data:

Product Type: Primary Antibodies
Applications: IHC
Recommended Dilution: IHC: 25-100
Positive control: Human esophagus cancer
Predicted cell location: Cytoplasm and Nucleus

Reactivity: Human, Mouse, Rat

Host: Rabbit

Isotype: IgG

Clonality: Polyclonal

Immunogen: Fusion protein of human LPXN

Formulation: pH7.4 PBS, 0.05% NaN₃, 40% Glycerol

Purification: Antigen affinity purification

Conjugation: Unconjugated

Storage: Store at -20°C.

Stability: 1 year

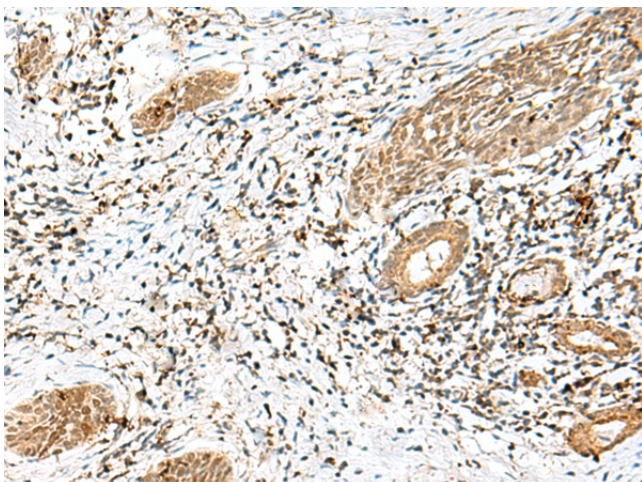
Gene Name: leupaxin

Database Link: [Entrez Gene 9404 Human O60711](#)

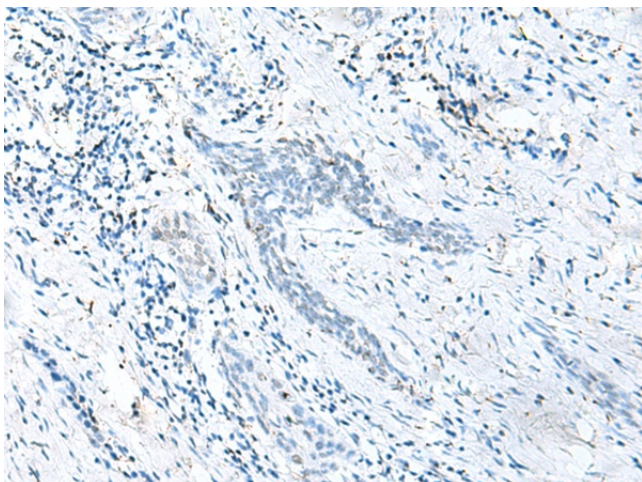
Background: The product encoded by this gene is preferentially expressed in hematopoietic cells and belongs to the paxillin protein family. Similar to other members of this focal-adhesion-associated adaptor-protein family, it has four leucine-rich LD-motifs in the N-terminus and four LIM domains in the C-terminus. It may function in cell type-specific signaling by associating with PYK2, a member of focal adhesion kinase family. As a substrate for a tyrosine kinase in lymphoid cells, this protein may also function in, and be regulated by, tyrosine kinase activity. Alternative splicing results in multiple transcript variants encoding distinct isoforms.

Synonyms: LDLP; LDPL; leupaxin

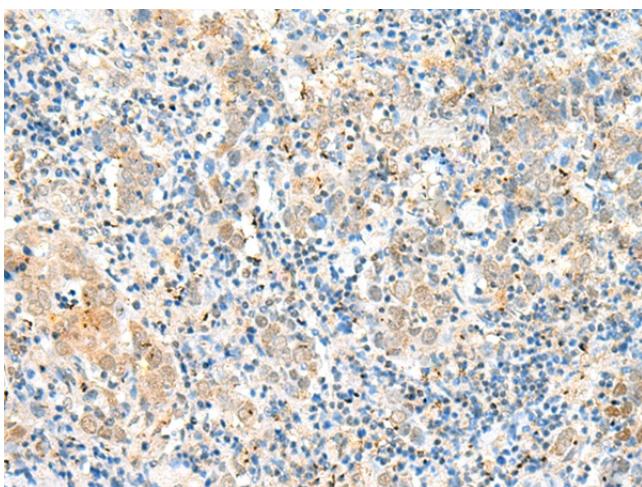
[View online »](#)

Product images:

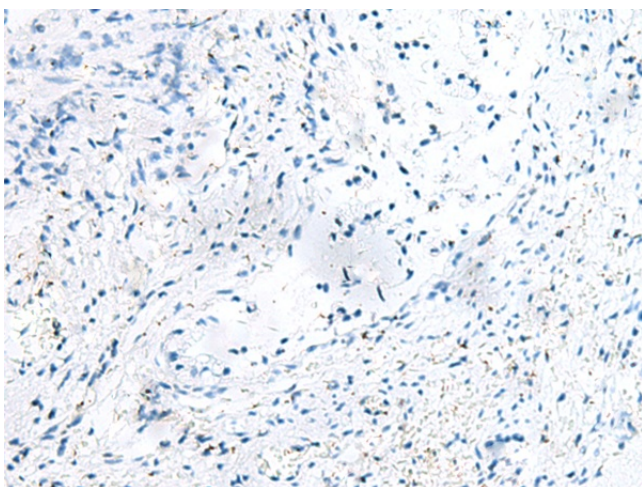
Immunohistochemistry of paraffin-embedded Human esophagus cancer tissue using [TA366012] (LPXN Antibody) at dilution 1/40 (Original magnification: ×200)



Immunohistochemistry of paraffin-embedded Human esophagus cancer tissue using [TA366012] (LPXN Antibody) at dilution 1/40, treated with fusion protein. (Original magnification: ×200)



Immunohistochemistry of paraffin-embedded Human cervical cancer tissue using [TA366012] (LPXN Antibody) at dilution 1/40 (Original magnification: ×200)



Immunohistochemistry of paraffin-embedded Human cervical cancer tissue using [TA366012] (LPXN Antibody) at dilution 1/40, treated with fusion protein. (Original magnification: ×200)