

## Product datasheet for **TA366011**

### NSUN4 Rabbit Polyclonal Antibody

#### Product data:

Product Type:	Primary Antibodies
Applications:	IHC, WB
Recommended Dilution:	WB: 200-1000 WB positive control: K562 cell lysate IHC: 25-100 Positive control: Human cervical cancer Predicted cell location: Cytoplasm and Cell membrane
Reactivity:	Human, Mouse
Host:	Rabbit
Isotype:	IgG
Clonality:	Polyclonal
Immunogen:	Fusion protein of human NSUN4
Formulation:	pH7.4 PBS, 0.05% NaN <sub>3</sub> , 40% Glycerol
Concentration:	lot specific
Purification:	Antigen affinity purification
Conjugation:	Unconjugated
Storage:	Store at -20°C.
Stability:	1 year
Predicted Protein Size:	43 kDa
Gene Name:	NOP2/Sun RNA methyltransferase family member 4
Database Link:	<a href="#">Entrez Gene 387338 Human</a> <a href="#">Q96CB9</a>



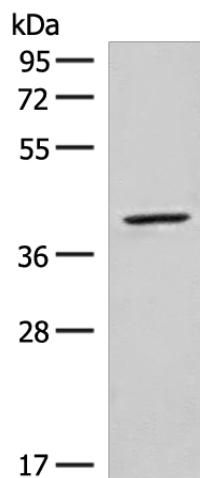
**Background:**

Involved in mitochondrial ribosome assembly. 5-methylcytosine rRNA methyltransferase that probably is involved in mitochondrial ribosome small subunit (SSU) maturation by methylation of mitochondrial 12S rRNA; the function is independent of MTERFD2/MTERF4 and assembled mitochondrial ribosome large subunit (LSU). Targeted to LSU by MTERFD2/MTERF4 and probably is involved in a final step in ribosome biogenesis to ensure that SSU and LSU are assembled. In vitro can methylate 16S rRNA of the LSU; the methylation is enhanced by MTERFD/MTERF4.

**Synonyms:**

MGC22960; RP4-603I14.2

**Product images:**



Gel: 8%SDS-PAGE

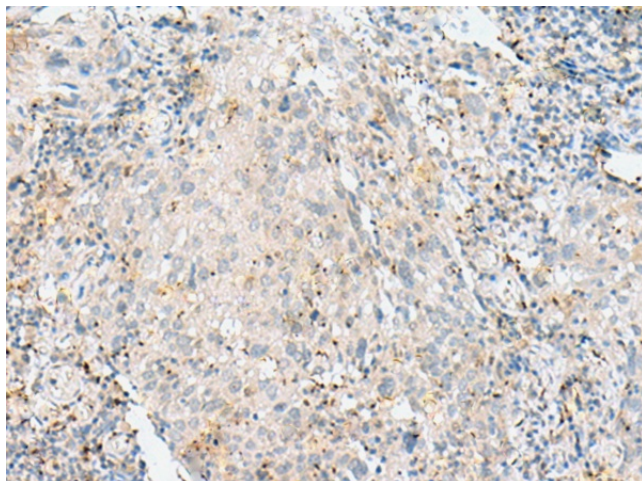
Lysate: 40 µg

Lane: K562 cell lysate

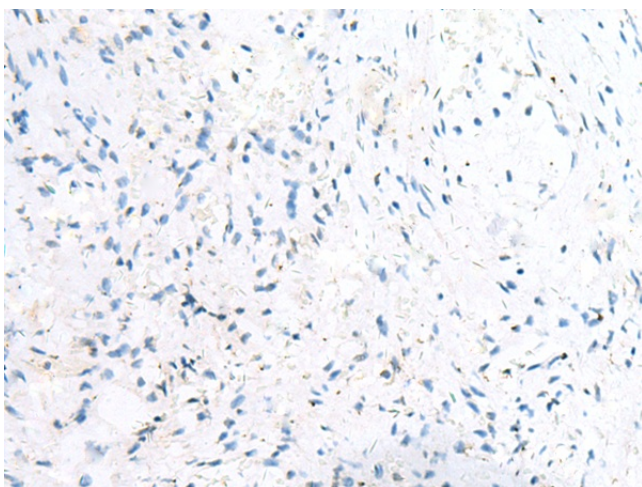
Primary antibody: TA366011 (NSUN4 Antibody) at dilution 1/300

Secondary antibody: Goat anti rabbit IgG at 1/8000 dilution

Exposure time: 20 seconds



Immunohistochemistry of paraffin-embedded Human cervical cancer tissue using TA366011 (NSUN4 Antibody) at dilution 1/40 (Original magnification: ×200)



Immunohistochemistry of paraffin-embedded Human cervical cancer tissue using TA366011 (NSUN4 Antibody) at dilution 1/40, treated with fusion protein. (Original magnification:  $\times 200$ )