

Product datasheet for **TA366009**

Esa1 (FLOT2) Rabbit Polyclonal Antibody

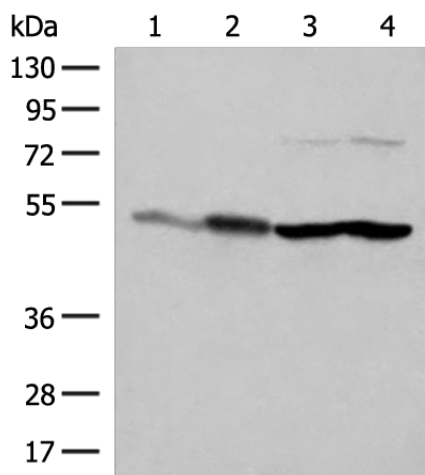
Product data:

Product Type:	Primary Antibodies
Applications:	IHC, WB
Recommended Dilution:	WB: 500-2000 WB positive control: Mouse brain tissue, HepG2, A375, Hela cell lysates IHC: 40-200 Positive control: Human cervical cancer Predicted cell location: Cytoplasm and Cell membrane
Reactivity:	Human, Mouse, Rat
Host:	Rabbit
Isotype:	IgG
Clonality:	Polyclonal
Immunogen:	Fusion protein of human FLOT2
Formulation:	pH7.4 PBS, 0.05% NaN ₃ , 40% Glycerol
Concentration:	lot specific
Purification:	Antigen affinity purification
Conjugation:	Unconjugated
Storage:	Store at -20°C.
Stability:	1 year
Predicted Protein Size:	47 kDa
Gene Name:	flotillin 2
Database Link:	Entrez Gene 2319 Human Q14254
Background:	Caveolae are small domains on the inner cell membrane involved in vesicular trafficking and signal transduction. This gene encodes a caveolae-associated, integral membrane protein, which is thought to function in neuronal signaling. May act as a scaffolding protein within caveolar membranes, functionally participating in formation of caveolae or caveolae-like vesicles. May be involved in epidermal cell adhesion and epidermal structure and function.
Synonyms:	ECS-1; ECS1; ESA; ESA1; M17S1

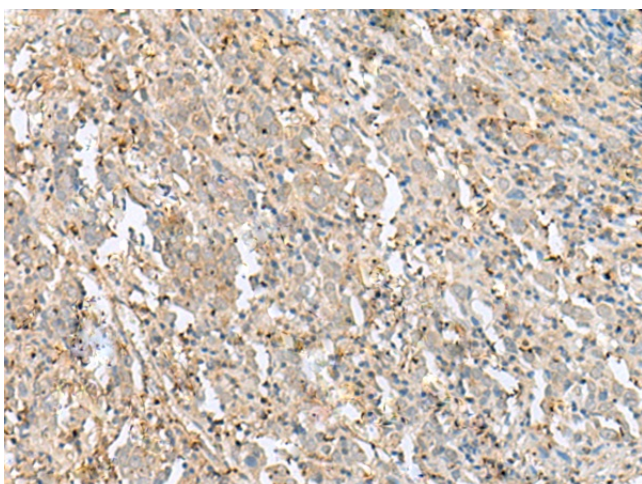


[View online »](#)

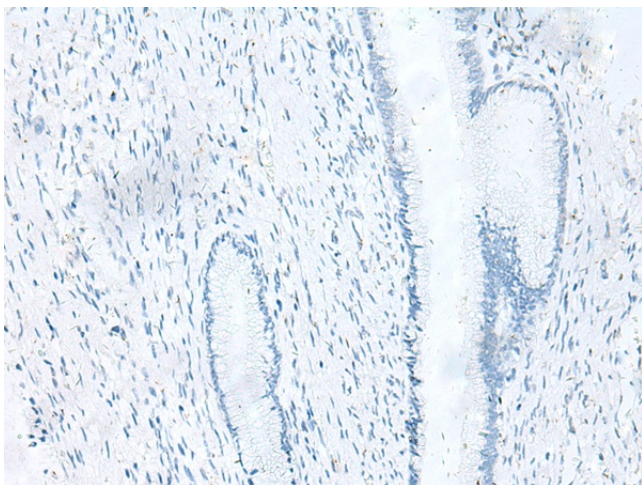
Product images:



Gel: 8%SDS-PAGE
 Lysate: 40 µg
 Lane 1-4: Mouse brain tissue
 HepG2
 A375
 Hela cell lysates
 Primary antibody: TA366009 (FLOT2 Antibody) at
 dilution 1/350
 Secondary antibody: Goat anti rabbit IgG at
 1/8000 dilution
 Exposure time: 3 seconds



Immunohistochemistry of paraffin-embedded
 Human cervical cancer tissue using TA366009
 (FLOT2 Antibody) at dilution 1/50 (Original
 magnification: ×200)



Immunohistochemistry of paraffin-embedded Human cervical cancer tissue using TA366009 (FLOT2 Antibody) at dilution 1/50, treated with fusion protein. (Original magnification: $\times 200$)