

## Product datasheet for **TA366006S**

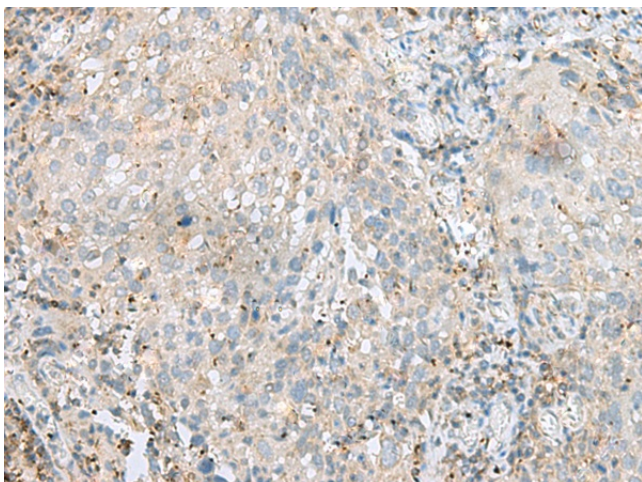
### SEPTIN1 Rabbit Polyclonal Antibody

#### Product data:

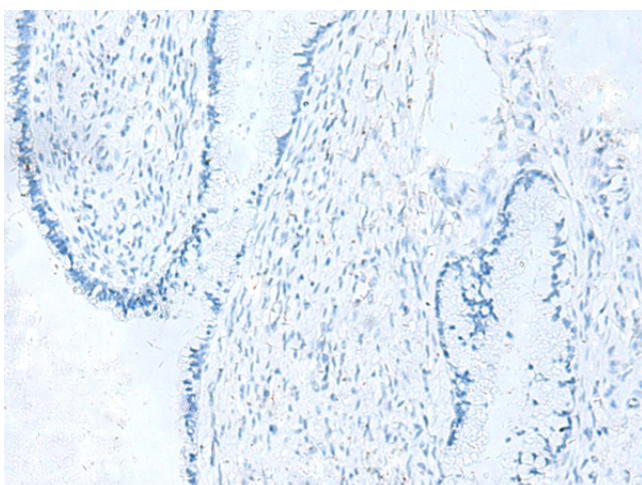
Product Type:	Primary Antibodies
Applications:	IHC
Recommended Dilution:	IHC: 40-200 Positive control: Human cervical cancer Predicted cell location: Cytoplasm
Reactivity:	Human, Mouse, Rat
Host:	Rabbit
Isotype:	IgG
Clonality:	Polyclonal
Immunogen:	Fusion protein of human SEPTIN1
Formulation:	pH7.4 PBS, 0.05% NaN <sub>3</sub> , 40% Glycerol
Purification:	Antigen affinity purification
Conjugation:	Unconjugated
Storage:	Store at -20°C.
Stability:	1 year
Gene Name:	septin 1
Database Link:	<a href="#">Entrez Gene 1731 Human Q8WYJ6</a>
Background:	This gene is a member of the septin family of GTPases. Members of this family are required for cytokinesis and the maintenance of cellular morphology. This gene encodes a protein that can form homo- and heterooligomeric filaments, and may contribute to the formation of neurofibrillary tangles in Alzheimer's disease. Alternatively spliced transcript variants have been found but the full-length nature of these variants has not been determined. [provided by RefSeq, Dec 2012]
Synonyms:	DIFF6; LARP; MGC20394; PNUTL3; SEP1

[View online »](#)

## Product images:



Immunohistochemistry of paraffin-embedded Human cervical cancer tissue using [TA366006] (SEPTIN1 Antibody) at dilution 1/60 (Original magnification: ×200)



Immunohistochemistry of paraffin-embedded Human cervical cancer tissue using [TA366006] (SEPTIN1 Antibody) at dilution 1/60, treated with fusion protein. (Original magnification: ×200)