

## Product datasheet for **TA366004S**

### COPE Rabbit Polyclonal Antibody

#### Product data:

Product Type:	Primary Antibodies
Applications:	IHC, WB
Recommended Dilution:	WB: 500-2000 WB positive control: 231, PC-3, HeLa, A375, HepG2 cell lysates IHC: 50-300 Positive control: Human cervical cancer Predicted cell location: Cytoplasm
Reactivity:	Human, Mouse
Host:	Rabbit
Isotype:	IgG
Clonality:	Polyclonal
Immunogen:	Fusion protein of human COPE
Formulation:	pH7.4 PBS, 0.05% NaN <sub>3</sub> , 40% Glycerol
Purification:	Antigen affinity purification
Conjugation:	Unconjugated
Storage:	Store at -20°C.
Stability:	1 year
Predicted Protein Size:	34 kDa
Gene Name:	coatomer protein complex subunit epsilon
Database Link:	<a href="#">Entrez Gene 11316 Human O14579</a>

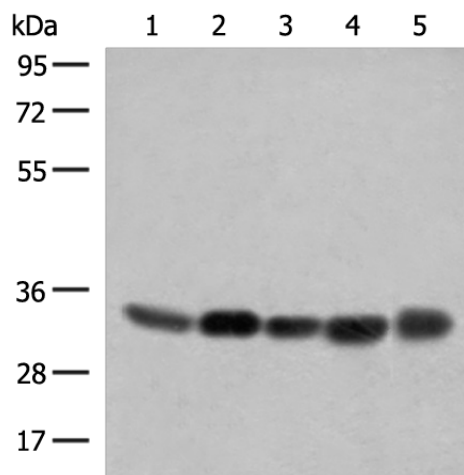
**Background:** The product of this gene is an epsilon subunit of coatomer protein complex. Coatomer is a cytosolic protein complex that binds to dilysine motifs and reversibly associates with Golgi non-clathrin-coated vesicles. It is required for budding from Golgi membranes, and is essential for the retrograde Golgi-to-ER transport of dilysine-tagged proteins. Coatomer complex consists of at least the alpha, beta, beta', gamma, delta, epsilon and zeta subunits. Alternatively spliced transcript variants encoding different isoforms have been identified.

**Synonyms:** epsilon-COP; FLJ13241



[View online »](#)

## Product images:



Gel: 8%SDS-PAGE

Lysate: 40  $\mu$ g

Lane 1-5: 231

PC-3

HeLa

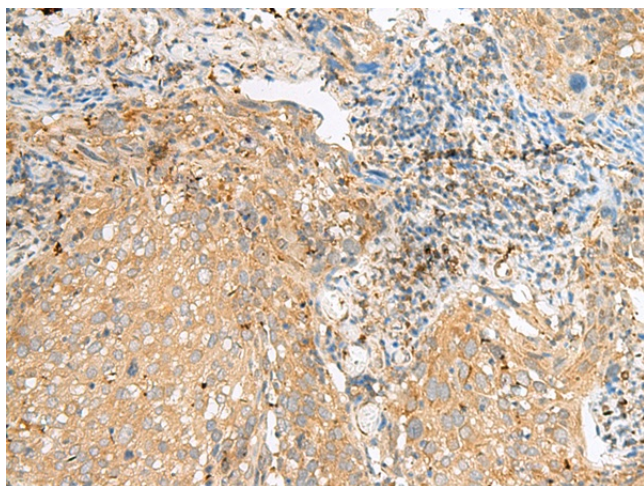
A375

HepG2 cell lysates

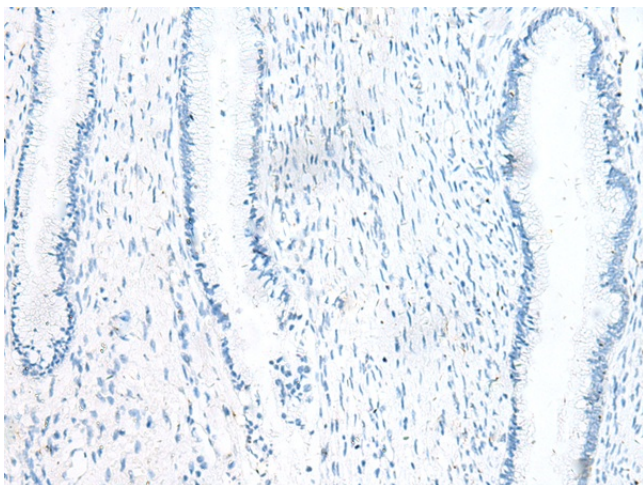
Primary antibody: [TA366004] (COPE Antibody) at dilution 1/350

Secondary antibody: Goat anti rabbit IgG at 1/8000 dilution

Exposure time: 10 seconds



Immunohistochemistry of paraffin-embedded Human cervical cancer tissue using [TA366004] (COPE Antibody) at dilution 1/50 (Original magnification:  $\times$ 200)



Immunohistochemistry of paraffin-embedded Human cervical cancer tissue using [TA366004] (COPE Antibody) at dilution 1/50, treated with fusion protein. (Original magnification: ×200)