

Product datasheet for **TA366003S**

TXNL1 Rabbit Polyclonal Antibody

Product data:

Product Type:	Primary Antibodies
Applications:	IHC, WB
Recommended Dilution:	WB: 1000-5000 WB positive control: Mouse fetal liver tissue, Mouse brain tissue, HepG2 cell, HUVEC cell, PC-3 cell lysates IHC: 50-200 Positive control: Human esophagus cancer Predicted cell location: Cytoplasm
Reactivity:	Human, Mouse, Rat
Host:	Rabbit
Isotype:	IgG
Clonality:	Polyclonal
Immunogen:	Fusion protein of human TXNL1
Formulation:	pH7.4 PBS, 0.05% NaN ₃ , 40% Glycerol
Purification:	Antigen affinity purification
Conjugation:	Unconjugated
Storage:	Store at -20°C.
Stability:	1 year
Predicted Protein Size:	32 kDa
Gene Name:	thioredoxin like 1
Database Link:	Entrez Gene 9352 Human O43396



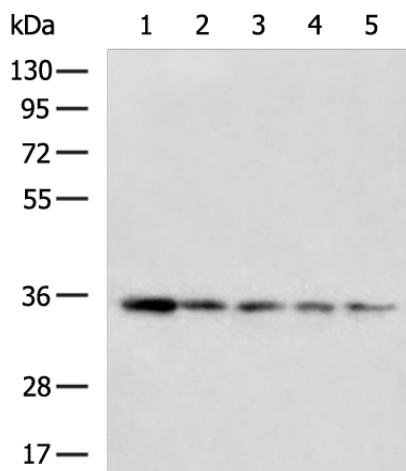
[View online »](#)

Background:

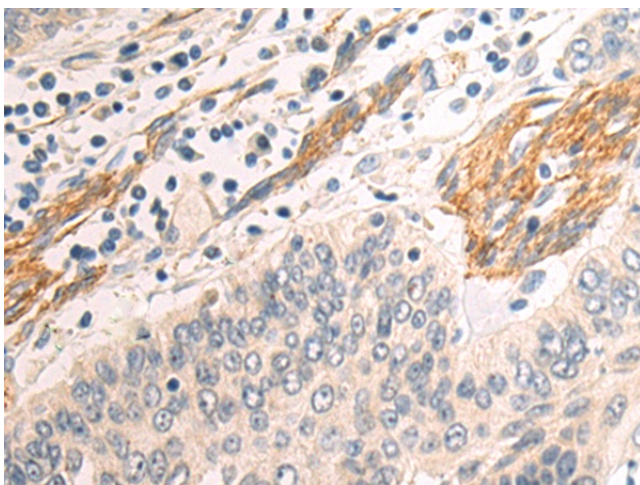
TXNL1(Thioredoxin-like protein 1) is also named as TRP32, TXL, TXNL and belongs to the thioredoxin family. It might be involved in the cellular response to sugar starvation stress. The predicted 289-amino acid, 32.3-kD protein has 2 distinct domains: an N-terminal domain, which is 43% identical to human TXN, and a C-terminal domain, which showed no homology to other proteins in the sequence databases. TXNL1 functions as an effector of oxidants or redox sensor that couples oxidative stress to endocytosis, by converting redox changes into a specific GDI:Rab5-mediated endocytic response.

Synonyms:

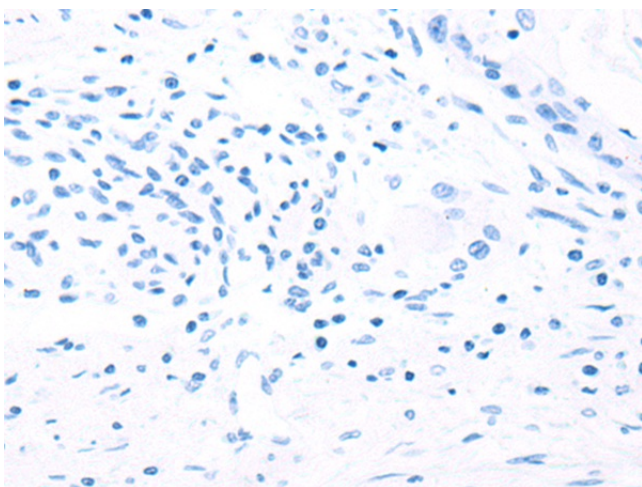
TRP32; TxI; TXL-1; TXNL

Product images:


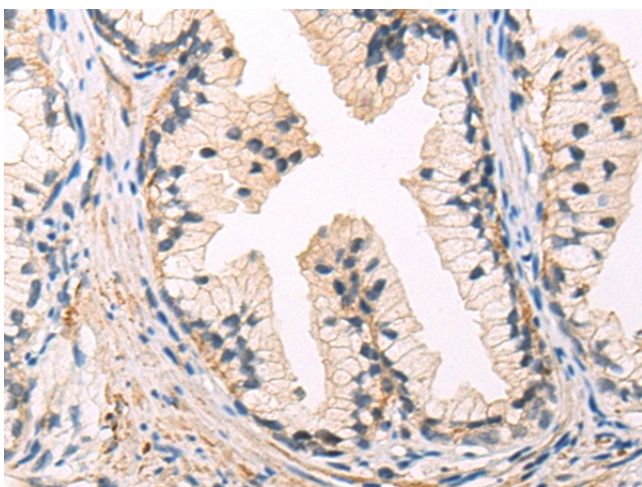
Gel: 8%SDS-PAGE
Lysate: 40 µg
Lane 1-5: Mouse fetal liver tissue
Mouse brain tissue
HepG2 cell
HUVEC cell
PC-3 cell lysates
Primary antibody: [TA366003] (TXNL1 Antibody)
at dilution 1/1300
Secondary antibody: Goat anti rabbit IgG at
1/5000 dilution
Exposure time: 10 seconds



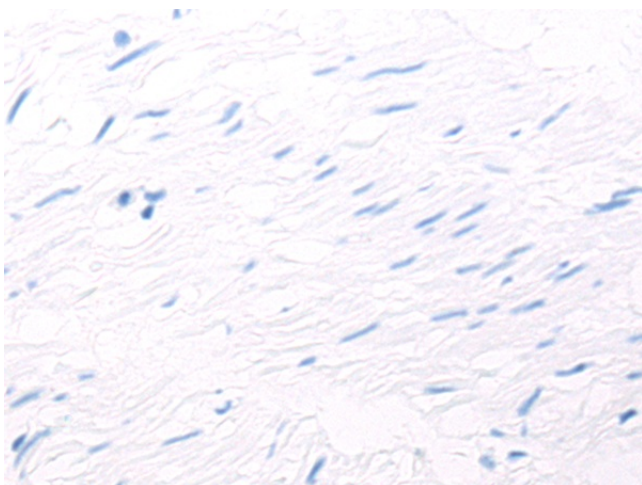
Immunohistochemistry of paraffin-embedded
Human esophagus cancer tissue using
[TA366003] (TXNL1 Antibody) at dilution 1/60
(Original magnification: ×200)



Immunohistochemistry of paraffin-embedded Human esophagus cancer tissue using [TA366003] (TXNL1 Antibody) at dilution 1/60, treated with fusion protein. (Original magnification: ×200)



Immunohistochemistry of paraffin-embedded Human prostate cancer tissue using [TA366003] (TXNL1 Antibody) at dilution 1/60 (Original magnification: ×200)



Immunohistochemistry of paraffin-embedded Human prostate cancer tissue using [TA366003] (TXNL1 Antibody) at dilution 1/60, treated with fusion protein. (Original magnification: ×200)