

Product datasheet for **TA366003**

TXNL1 Rabbit Polyclonal Antibody

Product data:

| | |
|-------------------------|--|
| Product Type: | Primary Antibodies |
| Applications: | IHC, WB |
| Recommended Dilution: | WB: 1000-5000 WB positive control: Mouse fetal liver tissue, Mouse brain tissue, HepG2 cell, HUVEC cell, PC-3 cell lysates IHC: 50-200 Positive control: Human esophagus cancer Predicted cell location: Cytoplasm |
| Reactivity: | Human, Mouse, Rat |
| Host: | Rabbit |
| Isotype: | IgG |
| Clonality: | Polyclonal |
| Immunogen: | Fusion protein of human TXNL1 |
| Formulation: | pH7.4 PBS, 0.05% NaN ₃ , 40% Glycerol |
| Concentration: | lot specific |
| Purification: | Antigen affinity purification |
| Conjugation: | Unconjugated |
| Storage: | Store at -20°C. |
| Stability: | 1 year |
| Predicted Protein Size: | 32 kDa |
| Gene Name: | thioredoxin like 1 |
| Database Link: | Entrez Gene 9352 Human O43396 |



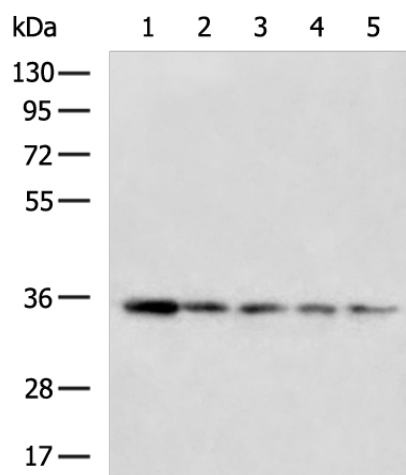
[View online »](#)

Background:

TXNL1(Thioredoxin-like protein 1) is also named as TRP32, TXL, TXNL and belongs to the thioredoxin family. It might be involved in the cellular response to sugar starvation stress. The predicted 289-amino acid, 32.3-kD protein has 2 distinct domains: an N-terminal domain, which is 43% identical to human TXN, and a C-terminal domain, which showed no homology to other proteins in the sequence databases. TXNL1 functions as an effector of oxidants or redox sensor that couples oxidative stress to endocytosis, by converting redox changes into a specific GDI:Rab5-mediated endocytic response.

Synonyms:

TRP32; TxI; TXL-1; TXNL

Product images:

Gel: 8%SDS-PAGE

Lysate: 40 μ g

Lane 1-5: Mouse fetal liver tissue

Mouse brain tissue

HepG2 cell

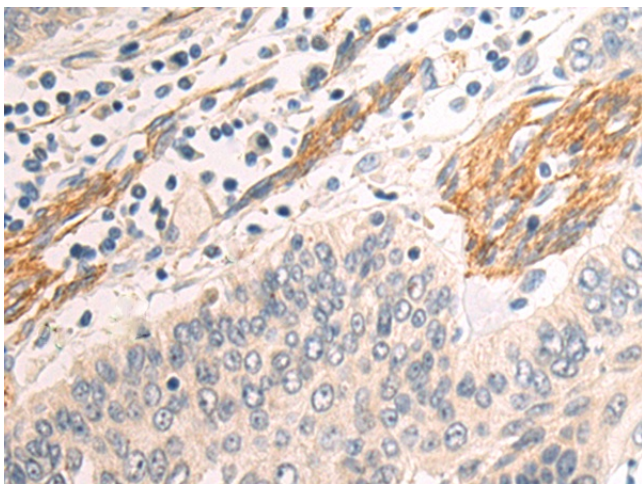
HUVEC cell

PC-3 cell lysates

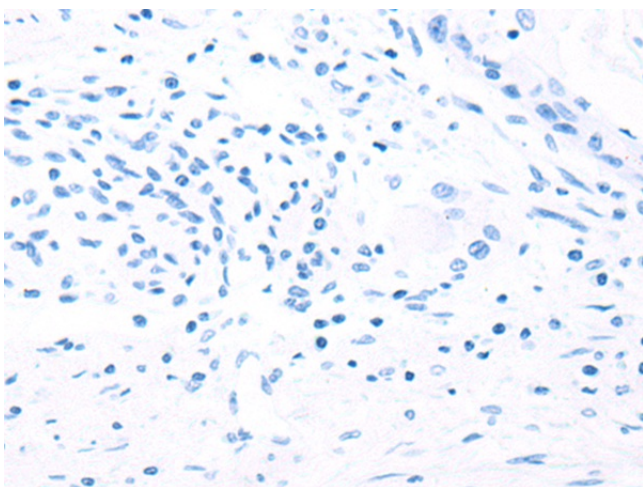
Primary antibody: TA366003 (TXNL1 Antibody) at dilution 1/1300

Secondary antibody: Goat anti rabbit IgG at 1/5000 dilution

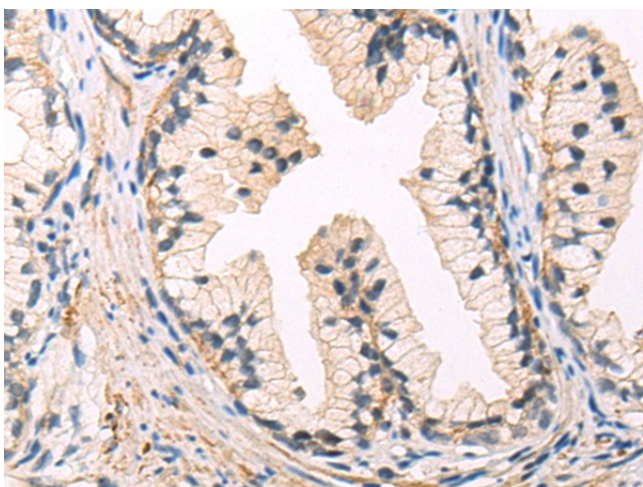
Exposure time: 10 seconds



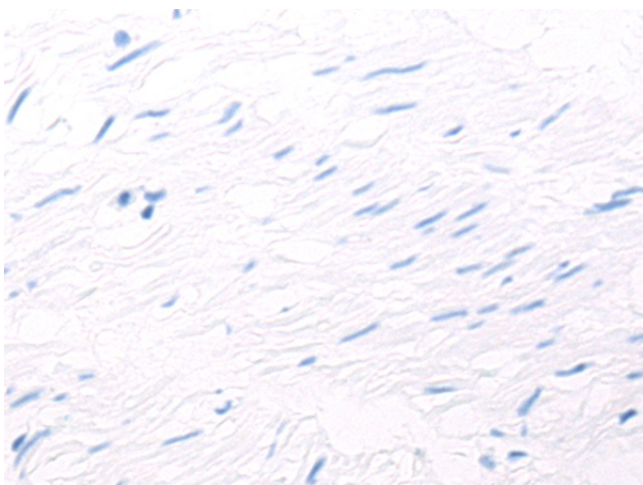
Immunohistochemistry of paraffin-embedded Human esophagus cancer tissue using TA366003 (TXNL1 Antibody) at dilution 1/60 (Original magnification: $\times 200$)



Immunohistochemistry of paraffin-embedded Human esophagus cancer tissue using TA366003 (TXNL1 Antibody) at dilution 1/60, treated with fusion protein. (Original magnification: $\times 200$)



Immunohistochemistry of paraffin-embedded Human prostate cancer tissue using TA366003 (TXNL1 Antibody) at dilution 1/60 (Original magnification: $\times 200$)



Immunohistochemistry of paraffin-embedded Human prostate cancer tissue using TA366003 (TXNL1 Antibody) at dilution 1/60, treated with fusion protein. (Original magnification: $\times 200$)