

Product datasheet for **TA365994**

CTRB1 Rabbit Polyclonal Antibody

Product data:

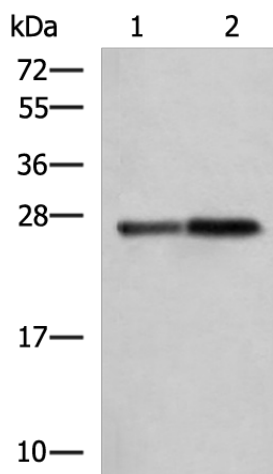
Product Type:	Primary Antibodies
Applications:	IHC, WB
Recommended Dilution:	WB: 1000-5000 WB positive control: Mouse pancreas tissue and Rat pancreas tissue lysates IHC: 20-100 Positive control: Human cervical cancer Predicted cell location: Secreted
Reactivity:	Human, Mouse, Rat
Host:	Rabbit
Isotype:	IgG
Clonality:	Polyclonal
Immunogen:	Fusion protein of human CTRB1
Formulation:	pH7.4 PBS, 0.05% NaN ₃ , 40% Glycerol
Concentration:	lot specific
Purification:	Antigen affinity purification
Conjugation:	Unconjugated
Storage:	Store at -20°C.
Stability:	1 year
Predicted Protein Size:	28 kDa
Gene Name:	chymotrypsinogen B1
Database Link:	Entrez Gene 1504 Human P17538
Background:	This gene encodes a member of the serine protease family of enzymes and forms a principal precursor of the pancreatic proteolytic enzymes. The encoded preproprotein is synthesized in the acinar cells of the pancreas and secreted into the small intestine where it undergoes proteolytic activation to generate a functional enzyme. This gene is located adjacent to a related chymotrypsinogen gene. This gene encodes distinct isoforms, some or all of which may undergo similar processing to generate the mature protein.



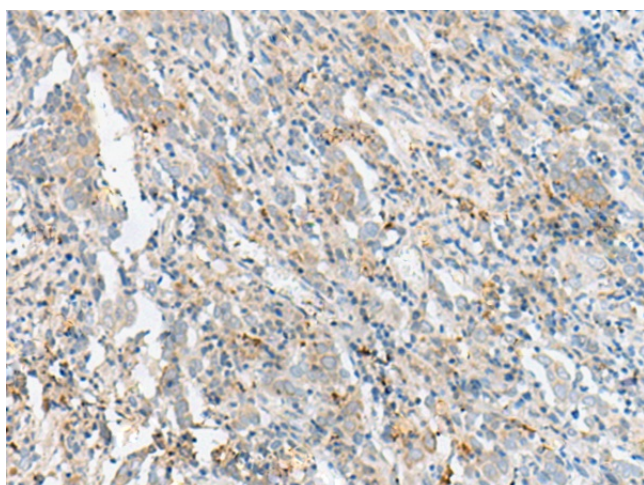
[View online »](#)

Synonyms: CTRB; FLJ42412; MGC88037

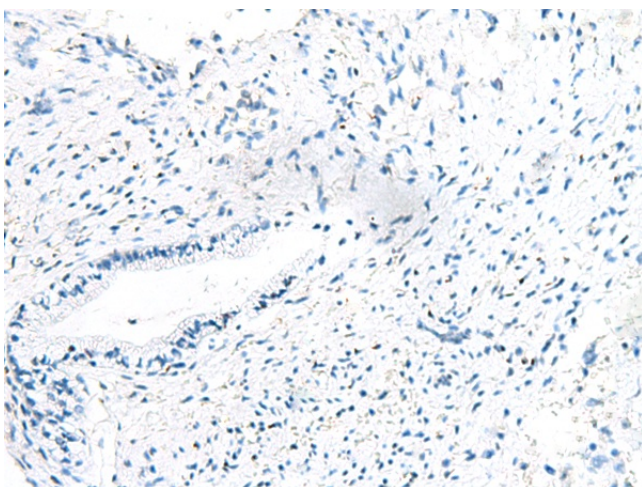
Product images:



Gel: 12%SDS-PAGE
Lysate: 40 μ g
Lane 1-2: Mouse pancreas tissue and Rat pancreas tissue lysates
Primary antibody: TA365994 (CTRB1 Antibody) at dilution 1/1000
Secondary antibody: Goat anti rabbit IgG at 1/5000 dilution
Exposure time: 3 seconds



Immunohistochemistry of paraffin-embedded Human cervical cancer tissue using TA365994 (CTRB1 Antibody) at dilution 1/60 (Original magnification: $\times 200$)



Immunohistochemistry of paraffin-embedded Human cervical cancer tissue using TA365994 (CTRB1 Antibody) at dilution 1/60, treated with fusion protein. (Original magnification: $\times 200$)