

## Product datasheet for **TA365992**

### PSMA4 Rabbit Polyclonal Antibody

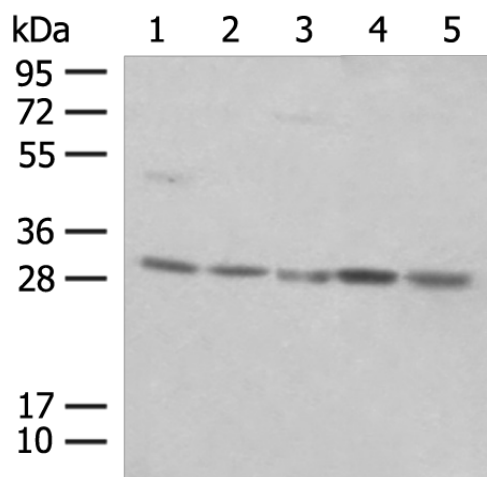
#### Product data:

Product Type:	Primary Antibodies
Applications:	IHC, WB
Recommended Dilution:	WB: 500-2000 WB positive control: NIH/3T3 cell, Mouse spleen tissue, K562 cell, Hela cell, 231 cell lysates IHC: 40-200 Positive control: Human liver cancer Predicted cell location: Cytoplasm and Nucleus
Reactivity:	Human, Mouse, Rat
Host:	Rabbit
Isotype:	IgG
Clonality:	Polyclonal
Immunogen:	Fusion protein of human PSMA4
Formulation:	pH7.4 PBS, 0.05% NaN <sub>3</sub> , 40% Glycerol
Concentration:	lot specific
Purification:	Antigen affinity purification
Conjugation:	Unconjugated
Storage:	Store at -20°C.
Stability:	1 year
Predicted Protein Size:	29 kDa
Gene Name:	proteasome subunit alpha 4
Database Link:	<a href="#">Entrez Gene 5685 Human P25789</a>
Background:	This gene encodes a core alpha subunit of the 20S proteasome, which is a highly ordered ring-shaped structure composed of four rings of 28 non-identical subunits. Proteasomes cleave peptides in an ATP- and ubiquitin-dependent manner.
Synonyms:	HC9; HsT17706; MGC12467; MGC24813; MGC111191; PSC9

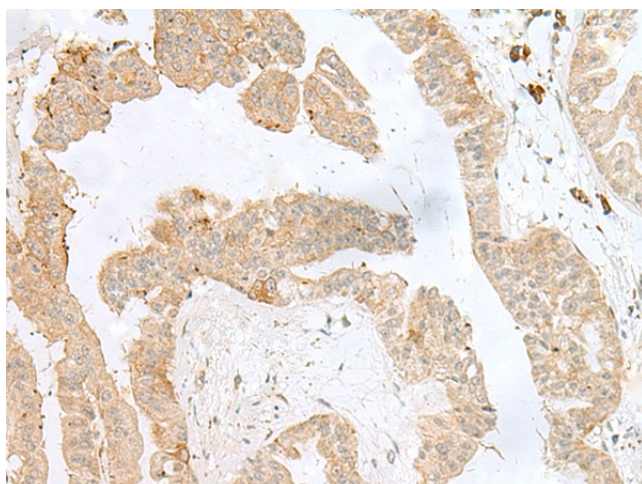


[View online »](#)

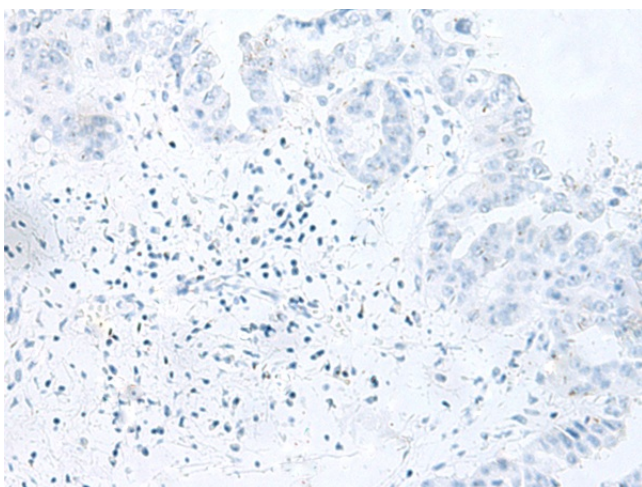
**Product images:**



Gel: 12%SDS-PAGE  
 Lysate: 40  $\mu$ g  
 Lane 1-5: NIH/3T3 cell  
 Mouse spleen tissue  
 K562 cell  
 Hela cell  
 231 cell lysates  
 Primary antibody: TA365992 (PSMA4 Antibody) at dilution 1/400  
 Secondary antibody: Goat anti rabbit IgG at 1/8000 dilution  
 Exposure time: 20 seconds



Immunohistochemistry of paraffin-embedded Human liver cancer tissue using TA365992 (PSMA4 Antibody) at dilution 1/50 (Original magnification:  $\times$ 200)



Immunohistochemistry of paraffin-embedded Human liver cancer tissue using TA365992 (PSMA4 Antibody) at dilution 1/50, treated with fusion protein. (Original magnification: ×200)